

Manor Gardens

Warminster, BA12 8PN

COOPER
AND
TANNER



£360,000 Freehold

We are pleased to offer this beautifully presented three/four bedroom detached family home which is tucked away in a sought after location of Manor Gardens. It is a perfect family house and offers an open plan kitchen/diner at the back. In addition there is a room downstairs which can be used as a bedroom four/annex playroom or office and a cloakroom and utility. The property offers a driveway with parking for two cars. It benefits from being close to the town centre and its amenities.

Manor Gardens

Warminster

BA12 8PN

 4  1  1 EPC D

£360,000 Freehold

DESCRIPTION

We are pleased to offer this beautifully presented three/four bedroom detached family home which is tucked away in a sought after location of Manor Gardens. It is a perfect family house and offers an open plan kitchen/diner at the back. In addition there is a room downstairs which can be used as a bedroom four/annex playroom or office and a cloakroom and utility. The property offers a driveway with parking for two cars. It benefits from being close to the town centre and its amenities. The accommodation comprises an entrance hall, light and airy sitting room leading into a good sized open plan kitchen/diner. At the dining end there are large sliding doors opening onto the rear garden, a central work surface with a gas hob with extractor fan over, a range of cupboards with work surface over, integrated double oven and single/grill, an integrated dishwasher, a large larger cupboard. A door leads to a downstairs cloakroom, bedroom 4/study and a utility room. Leading upstairs there is a family bathroom and three double bedrooms.

OUTSIDE

At the front of the property there is lawn to the side with established shrubs and parking for two cars. A side gate gives access to the rear garden which is privately enclosed with fencing and mature hedging, a good sized lawn. Also it has a large raised deck area enclosed by trellis and provides a good entertaining area.

COUNCIL TAX

BAND 'D'

LOCATION

Warminster

The town of Warminster offers a wide range of shopping and leisure facilities to include library, sports centre, swimming pool, schools, churches, doctors' and dentists' surgeries, hospital and post office. Warminster also benefits from a main line railway station to London Waterloo whilst the nearby A303 provides excellent road links to London to the east and Exeter to the west. Local attractions include Longleat House and Safari Park, Shearwater Lake, Stourhead and Salisbury Plain.

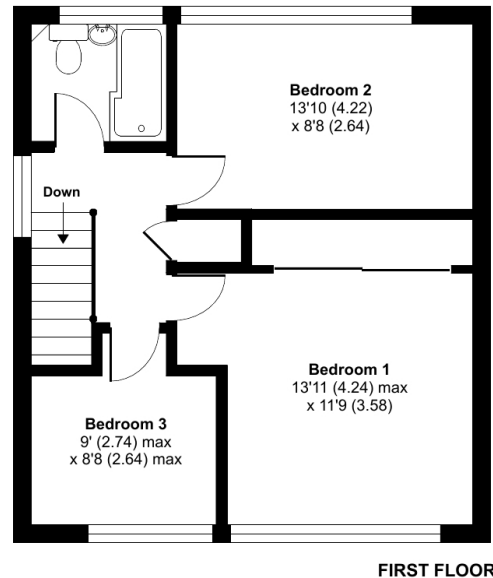
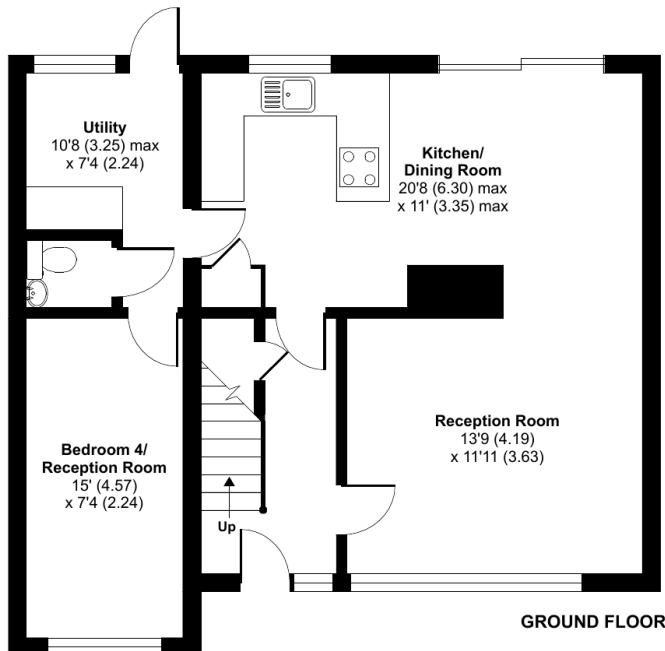




Manor Gardens, BA12

Approximate Area = 1170 sq ft / 108.7 sq m

For identification only - Not to scale



Floor plan produced in accordance with RICS Property Measurement Standards incorporating International Property Measurement Standards (IPMS2 Residential). © nitchecom 2023. Produced for Cooper and Tanner. REF: 1048099

WARMINSTER OFFICE

Telephone 01985 215579

48-50, Market Place, Warminster, Wiltshire BA12 9AN

warminster@cooperandtanner.co.uk

COOPER
AND
TANNER

Important Notice: These particulars are set out as a general outline only for the guidance of intended purchasers and do not constitute, nor constitute part of, an offer or contract. All descriptions, dimensions, reference to condition and necessary permissions for use and occupation, warranties and other details are given without responsibility and any intending purchasers should not rely on the measurements or representations of fact but must satisfy themselves by inspection or otherwise as to the correctness of each of them.

