



Bridge View, London, W6 9DD

**Cow & Co**  
LONDON





This larger than average two bedroom garden flat is located moments from the River Thames and all the amenities of Hammersmith Broadway.

The property enjoys its own private front entrance and hallway, a light filled master bedroom, a second bedroom and bathroom. To the rear there is a large kitchen and separate living room with designated dining space. The kitchen leads on to a beautiful private garden, fantastic for entertaining.

Bridge View is a leafy residential street very close to the River Thames and to Hammersmith, which is a major transport hub with an Underground interchange and easy access to the A4 east to central London and M4 west for Heathrow Airport.

There are a number of excellent maintained independent schools and state school for all ages within walking distance, as well as numerous shops, services and restaurants on King Street including the superb Lyric Theatre.

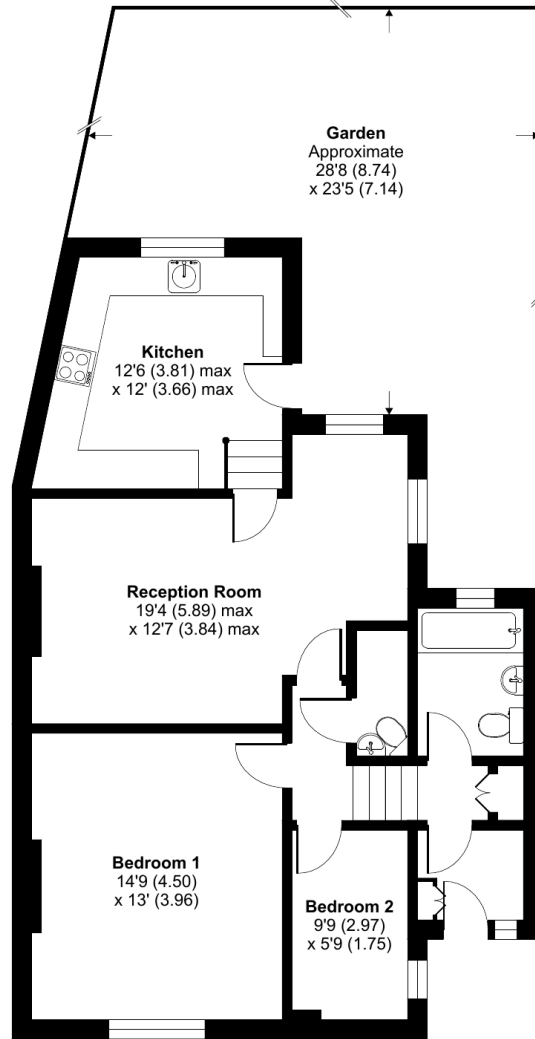


- Two bedroom garden flat
- Recently refurbished kitchen
- Period conversion
- Close to the river
- Open plan sitting room with dining area
- Private entrance
- Excellent amenities and transport links nearby
- Share of Freehold

# Bridge View, London, W6

Approximate Area = 792 sq ft / 73.5 sq m

For identification only - Not to scale



**GROUND FLOOR**



Floor plan produced in accordance with RICS Property Measurement Standards incorporating International Property Measurement Standards (IPMS2 Residential). © nchecon 2023. Produced for Cow & Co Properties Ltd. REF: 999104

Tel: 0208 065 0010  
Email: [thehub@cowandco-london.com](mailto:thehub@cowandco-london.com)  
Web: [cowandco-london.com](http://cowandco-london.com)

Agents note: All measurements are approximate and whilst every attempt has been made to ensure accuracy they are for general guidance only and must not be relied on. The fixture and fittings referred to have not been tested and therefore no guarantee can be given that they are in working order. Internal photographs are reproduced for general information and it must not be inferred that any item shown is included with the property.

# Cow & Co

LONDON