



**Flat 12, 304 Moonstone House, South Row,
Milton Keynes, Buckinghamshire, MK9 2FR**

£200,000 Leasehold

- CENTRAL MILTON KEYNES
- WALKING DISTANCE TO TRAIN STATION
- Great Investment opportunity
- Allocated parking
- Ground Floor with Balcony
- CHAIN FREE
- Can rent for £1050 pcm
- EPC Rating





Living

5.27m x 3.75m (17' 3" x 12' 4")

Kitchen

1.90m x 3.06m (6' 3" x 10' 0")

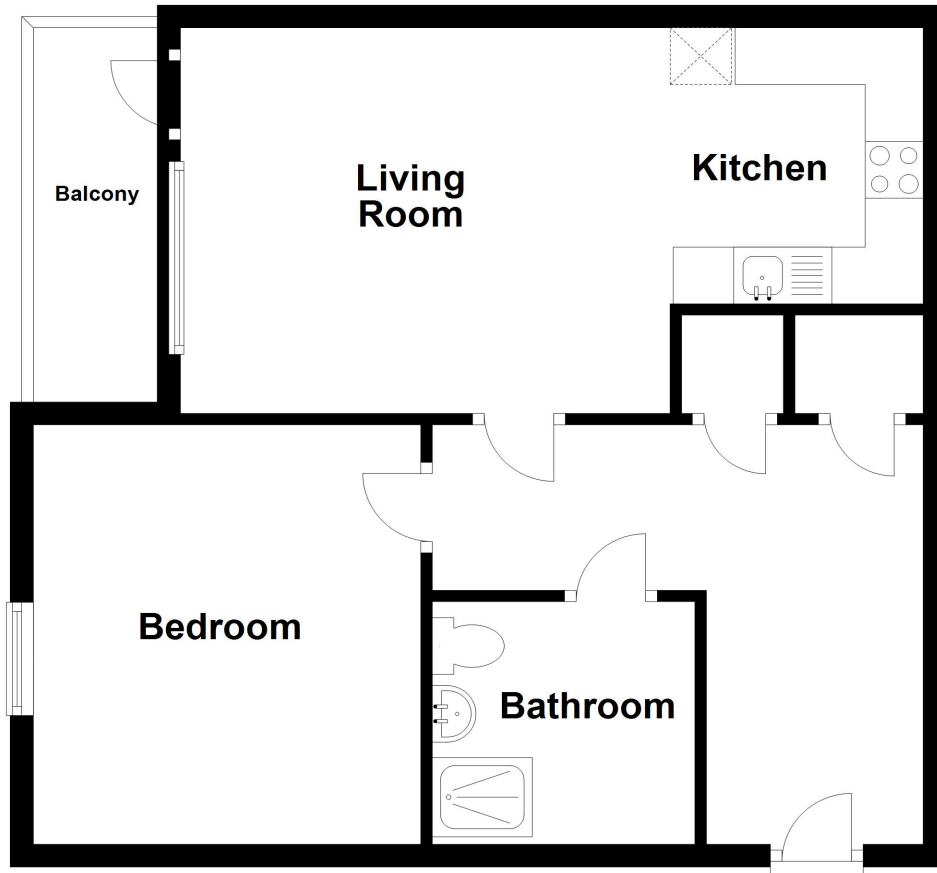
Bedroom one

3.13m x 3.21m (10' 3" x 10' 6")

Disclaimer

Whilst we have endeavoured to prepare our sales particulars accurately none of the services, appliances or equipment have been tested. A buyer should satisfy themselves on such matters prior to purchase. Any measurements or distances mentioned in these particulars are for guide reference only. If such particulars are fundamental to a purchase, buyers should rely on their own enquiries. All enquiries should be directed to Elevation Estate Agents in the first instance.

Ground Floor



Floor plans are for layout purposes only. Measurements are approximate and subject to inaccuracies
Plan produced using PlanUp.