



230 Northwick Road, Northwick,  
Worcester WR3 7QT



A two bedroom semi detached bungalow offered for sale with no onward chain, in Northwick.

The home is well presented & cared for & extended & comprises; hallway with access into the two bedrooms, living room, kitchen & shower room. From the kitchen is the sun room, which in turn leads out to the garden.

The shower room has a shower cubicle, W.C & pedestal wash basin. The main bedroom enjoys a garden outlook. The kitchen has been re-fitted by the present owners & has a range of base & wall units, sink & drainer, oven & hob & door to the sun room. From the sun room is a courtesy door into the garage.

Externally, the driveway is block paved & leads up to the single garage, which has an up & over door. To the rear, the garden is fenced & enclosed, being mainly laid to lawn with raised beds.

The home is walking distance of a bus stop & a co-op on Ombersley Road for all your essentials. Worcester city centre is a short drive away & offers a wide range of amenities to include pubs, bars, restaurants & cafes, shops, supermarkets, retail parks & leisure facilities. Worcester has two train stations with direct links to London stations.

FREEHOLD

Council Tax Band C - Worcester Council

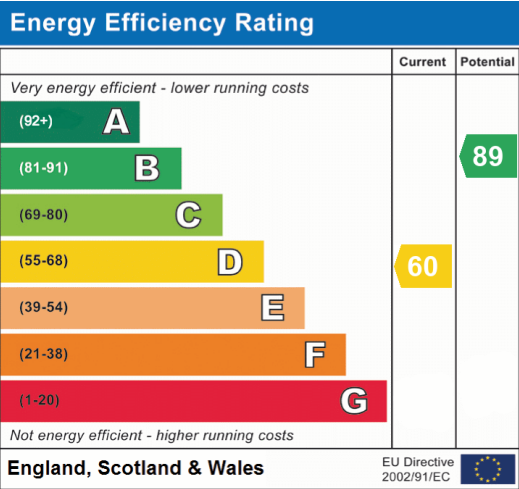






**Agents Note**

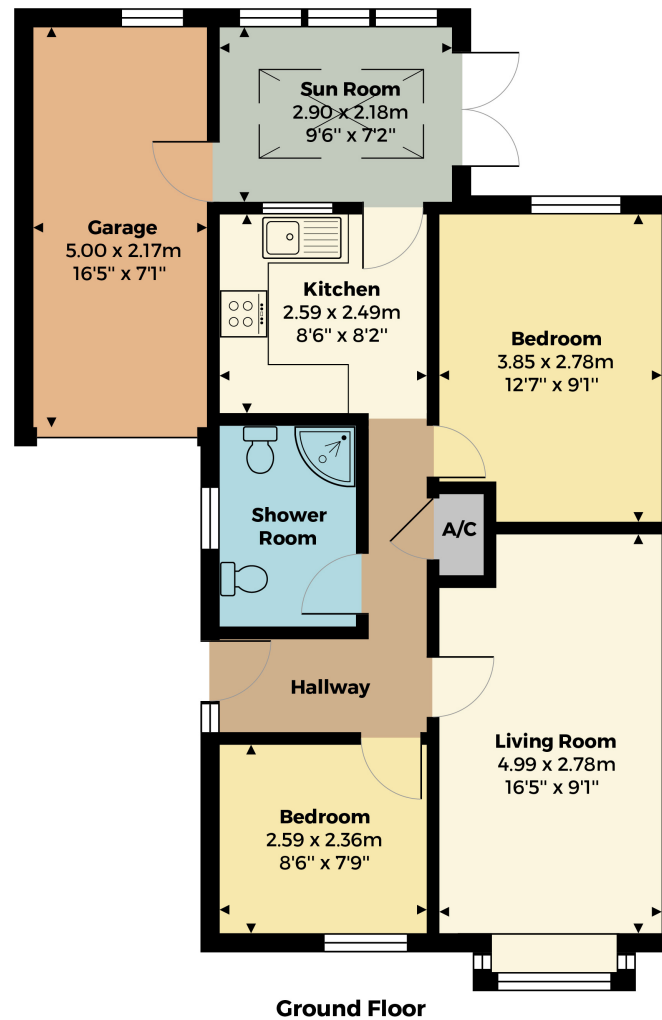
Please note that a Buyers Fee of £950 including VAT is payable at the point of an offer being accepted to Shelton & Lines. For terms and condions please see Shelton & Lines website under the Sales Tab and "Buyers Info" page.



**General Information**

Whilst we endeavour to make our sales particulars fair, accurate and reliable, they are only a general guide to the property. Accordingly, if there is any point which is of particular importance to you please contact the office and we will be pleased to check the position for you, especially if you are travelling some distance to view the property. **FIXTURES AND FITTINGS** All items not specifically mentioned within these details are to be excluded from the sale. Any mention of services/appliances within these details does not imply they are in full and efficient working order and no testing has been done by the Agent.

All measurements are approximate and for display purposes only



[sheltonandlines.co.uk](http://sheltonandlines.co.uk)