



Metcalfe Road,
Stanfields



OneAgency

01782 970222

hello@oneagencygroup.co.uk



Offers in Region of £129,000

A three bedroom semi-detached house in the popular location of Stanfields. The property benefits from a kitchen/diner, ground floor W/C, three bedrooms and spacious garden. The property would be ideally suited to first time buyers or investors. Located walking distance to amenities, schools and commuter links also nearby. Viewing is highly advised!





Ground Floor

Hall

Front door, radiator and carpet flooring.

Lounge

4.11m x 3.93m (13' 6" x 12' 11") A double glazed window, radiator, under stairs storage with boiler and carpet flooring.

Kitchen/Diner

3.91m x 2.83m (12' 10" x 9' 3") A range of wall and base units, stainless steel sink basin, space for a cooker, plumbing for a dishwasher, space for a fridge/freezer and dryer, double glazed window, radiator and vinyl flooring.

W/C

A low level W/C, hand wash basin, radiator, double glazed window and vinyl flooring.

First Floor

Bedroom One

3.80m x 2.75m (12' 6" x 9' 0") A double glazed window, radiator and carpet flooring.

Bedroom Two

3.13m x 2.61m (10' 3" x 8' 7") A double glazed window, radiator and carpet flooring.



Bedroom Three

2.83m x 2.14m (9' 3" x 7' 0") A double glazed window, radiator and carpet flooring.

Bathroom

1.89m x 1.33m (6' 2" x 4' 4") A bath with overhead shower, pedestal hand wash basin, low level W/C, radiator, double glazed window and vinyl flooring.

External

Front - Lawned garden area and patio.

Rear - Paved patio area and lawned garden with fenced borders.

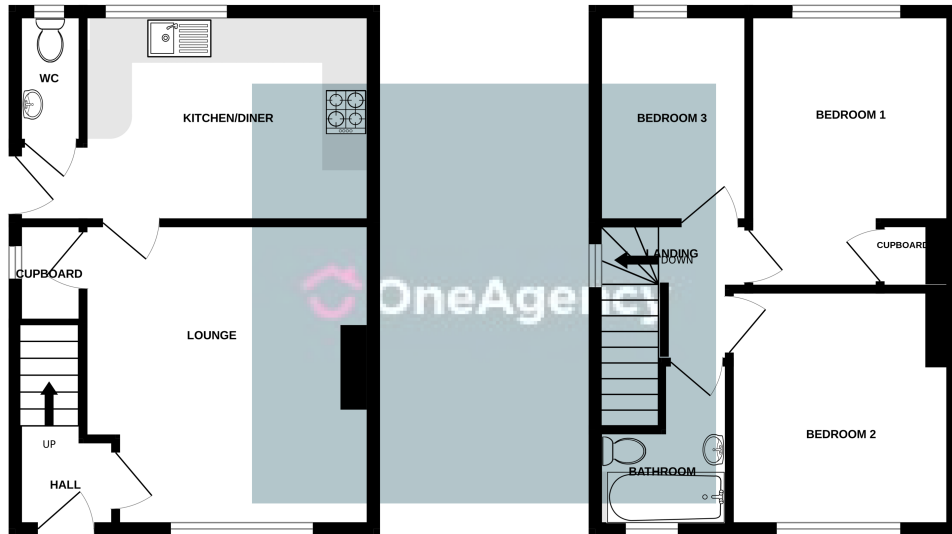
AGENTS NOTES

The property has a solar thermal which provides hot water.

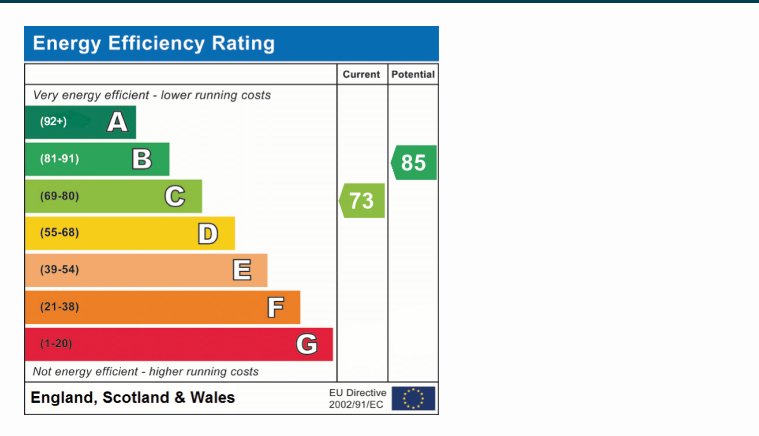
The council tax band is A. The local authority is Stoke-on-Trent.

GROUND FLOOR

1ST FLOOR



Whilst every attempt has been made to ensure the accuracy of the floorplan contained here, measurements of doors, windows, rooms and any other items are approximate, and no responsibility is taken for any error, omission or mis-statement. This plan is for illustrative purposes only and should be used as such by any prospective purchaser. The services, systems and appliances shown have not been tested and no guarantee as to their operability or efficiency can be given.
Made with Metropix ©2024



OneAgency, 9 & 10 Ridge House Drive, Festival Park, Stoke-on-Trent, ST1 5SJ

01782 970222

hello@oneagencygroup.co.uk

Every attempt has been made to ensure accuracy, however, all measurements are approximate and for illustrative purposes only. **Not to scale.**

In accordance with The Consumer Protection from Unfair Trading Regulations 2008 the following particulars have been prepared in good faith and they are not intended to constitute part of an offer or contract. We have not carried out a structural survey and the services, appliances and specific fittings have not been tested. All photographs, measurements, floor plans and distances referred to are given as a guide only and should not be relied upon for the purchase of carpets or any other fixtures and fittings. Lease details, service charges and ground rent (where applicable) are given as a guide only and should be checked and confirmed by your Solicitor prior to exchange of contracts.