





Key Features

 2 Bedrooms

 1 Public

 1 Bathroom

- A well-presented, end terraced villa offered in move in condition and conveniently located for Cowdenbeath's amenities
- A popular location. Selkirk Avenue is located within walking distance of excellent local amenities, including various shops, supermarkets and food outlets on the High Street, well reputed schools and regular bus services, both local and throughout Fife
- The location provides easy access to the A92, M90 Motorway and Forth Road Bridges with access to Edinburgh and links throughout central Scotland
- Dunfermline is approximately four miles away with Fife Leisure Park offering various coffee shops, restaurants and leisure facilities, including a ten screen cinema, and Cowdenbeath Railway Station is within walking distance
- Ample parking and neat front gardens
- Entrance hall leading to a front facing living room
- Modern kitchen with a wide range of storage options, built in appliances and access out onto rear gardens
- Landing with built in storage available and a contemporary, tiled bathroom with mains fed shower over bath, WC and wash hand basin
- Two double bedrooms with built in wardrobe space available
- Neat gardens to the rear with artificial turf, garden shed and patio
- The property benefits from double glazing and gas central heating.
- A fantastic first-time home, offered in move in condition and viewing comes highly recommended





Location

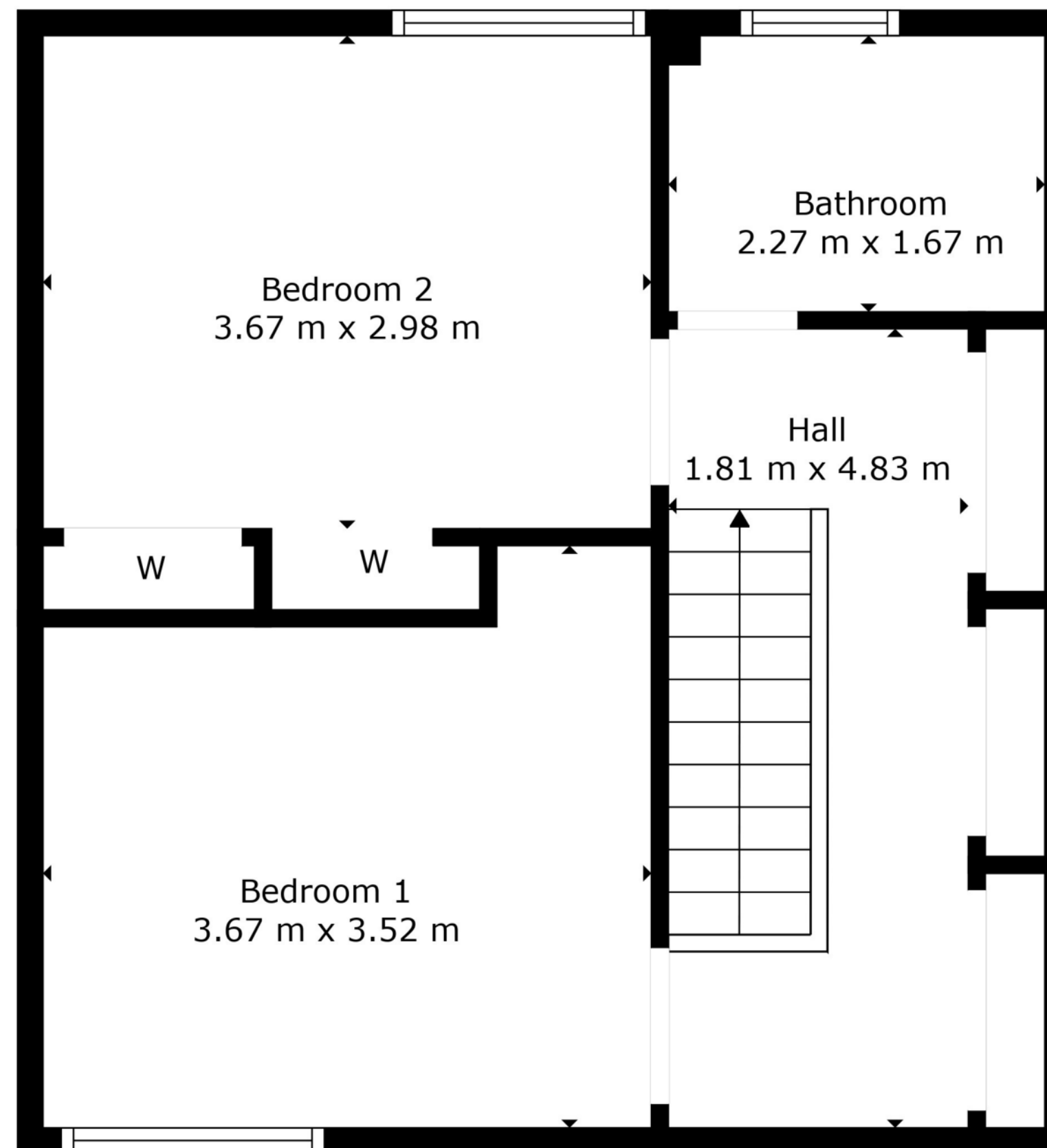
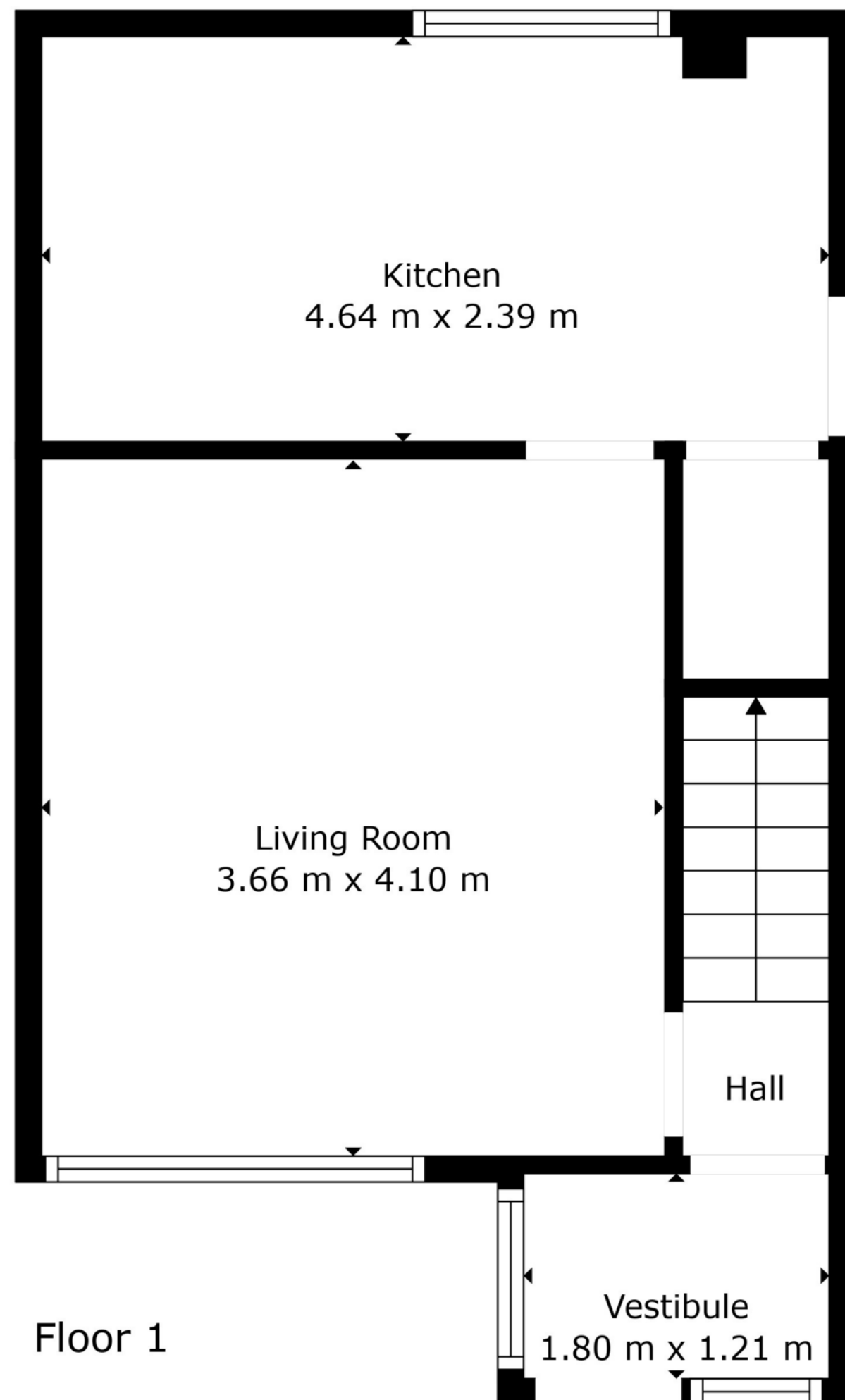
Nestled in the heart of Fife, Cowdenbeath offers a fantastic location for families, first-time buyers, and commuters alike. With excellent transport links—including a train station offering direct services to Edinburgh—and close proximity to the A92, Cowdenbeath provides easy access to both local amenities and major city hubs including Dunfermline and Edinburgh.

The town boasts a variety of property types, from traditional sandstone villas to modern family homes. Local schools, supermarkets, and leisure facilities, including a popular leisure centre and nearby golf courses, make it a practical and enjoyable place to live.

For those seeking community spirit, green spaces, and excellent amenities, Cowdenbeath presents a compelling opportunity on the Fife property market.







Floor Plan Created By Cubicasa App. Measurements Deemed Highly Reliable But Not Guaranteed.



Enquiries

 01383 629720

 info@maloco.co.uk

 maloco.co.uk



Floorplans are for illustrative purposes only. Measurements are deemed highly reliable but not guaranteed.