



Flat 2 Alton Court Willoughby Road,
Langley, Berkshire. SL3 8JQ.

£1,400

t: 01753 593888

w: www.flatmans.com

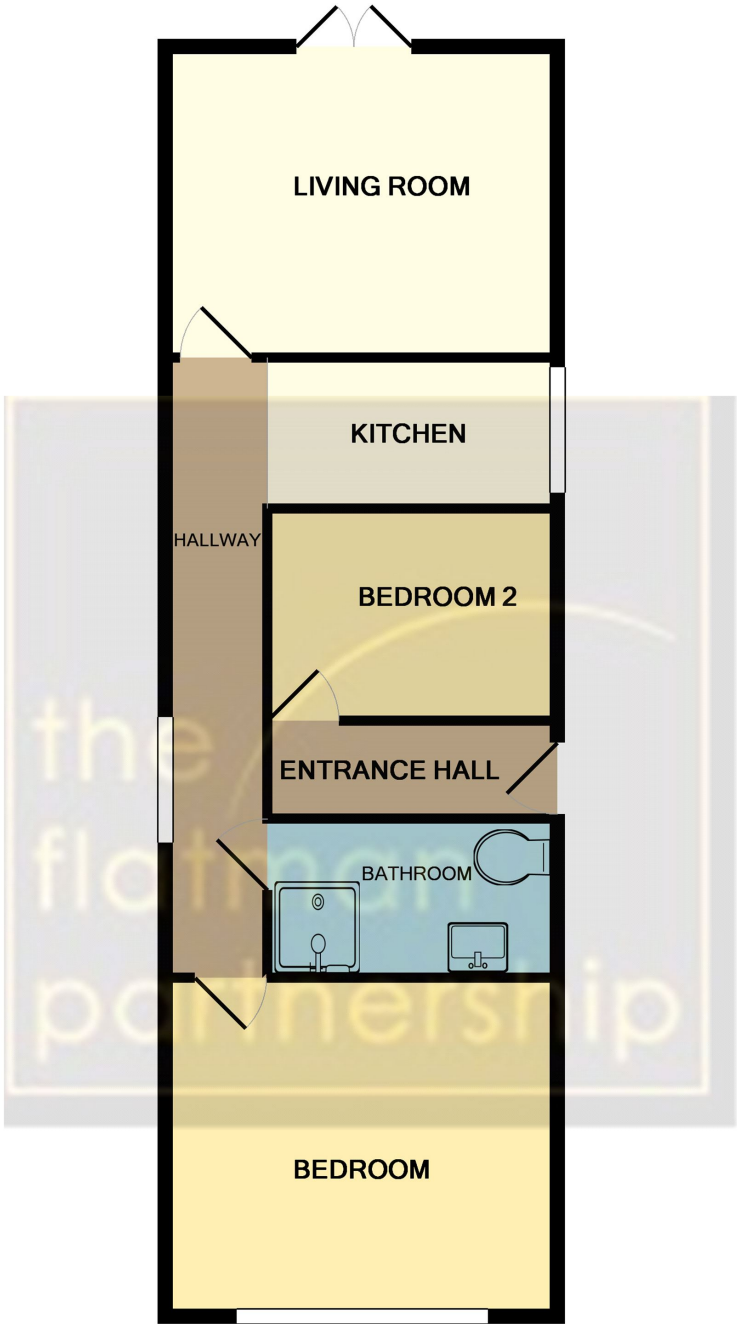
e: langleysales@flatmans.com

Features of Interest

- HOMLEY TWO BEDROOM MAISONETTE
- GROUND FLOOR
- WALKING DISTANCE TO LANGLEY MAINLINE RAILWAY STATION
- EASY ACCESS TO M4 & M25 MOTORWAYS
- GOOD SIZED LIVING ROOM
- PRIVATE REAR GARDEN
- UNFURNISHED
- AVAILABLE END OF JANUARY 2024

Description

Homely two-bedroom ground-floor maisonette in the heart of Langley Village. Walking distance to Langley Mainline Railway Station and easy access to M4 & M25 motorways. Features include an entrance hall, good-sized living room, kitchen, shower room, large double bedroom, a further bedroom, private rear garden, and on-street parking. The property comes unfurnished and is available end of January 2024.



The details we provide are prepared as a general guide only, and should not be relied upon as a basis to enter into a legal contract, or to commit expenditure. An interested party should consult their own surveyor, solicitor or other professionals before committing themselves to any expenditure or other legal commitments.

Whilst every attempt has been made to ensure the accuracy of the floor plan contained here, measurements of doors, windows, rooms and any other items are approximate and no responsibility is taken for any error, omission, or mis-statement. This plan is for illustrative purposes only and should be used as such by any prospective purchaser. The services, systems and appliances shown have not been tested and no guarantee as to their operability or efficiency can be given.
Made with Metropix ©2019

