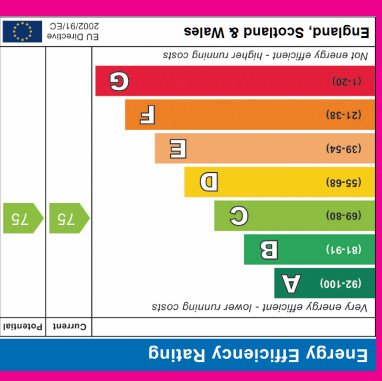
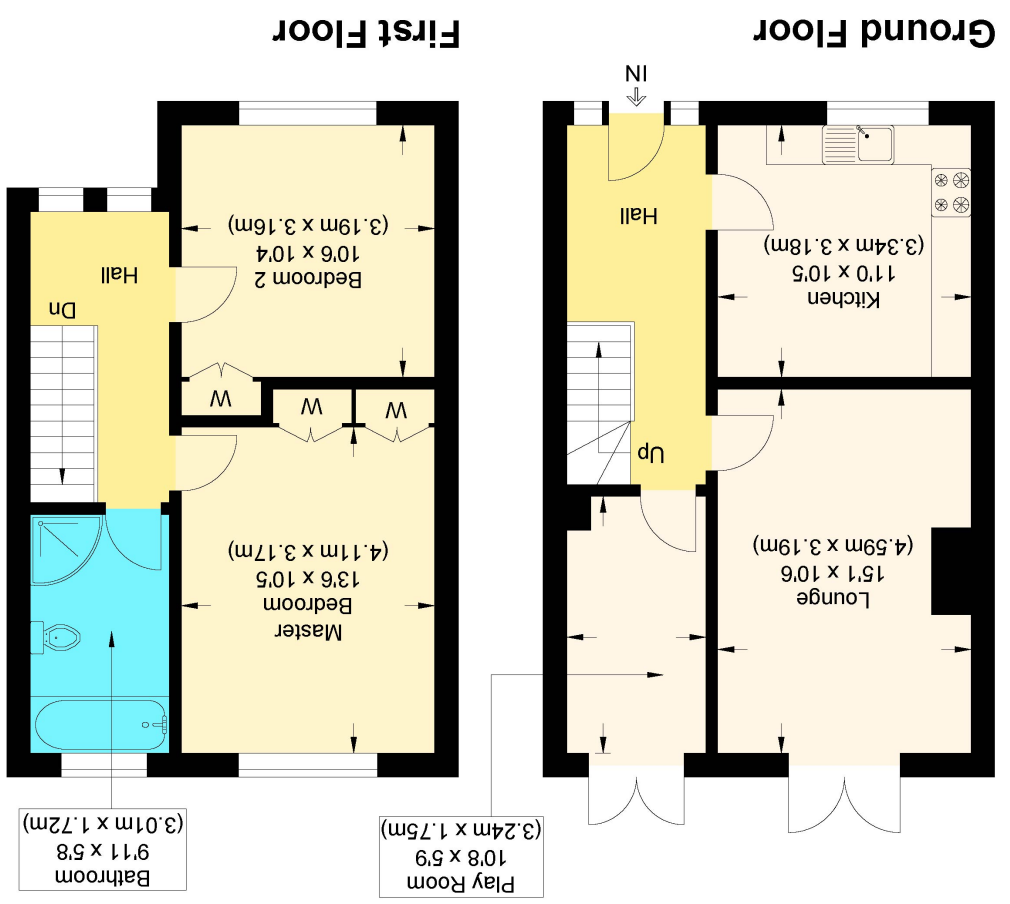


Illustration for identification purposes only, measurements are approximate, not to scale.

Approximate Gross Internal Floor Area : 78.50 sq m / 844.96 sq ft

The Paddocks



Description

Accommodation comprises of entrance hall, a generous size lounge/diner, kitchen, large double bedroom and bathroom.



Please note this property is in need of full refurbishment through out. The location is good and convenient for the station and Town Centre. This property is also offered chain free.

Service charge 948p/a

87 years remaining

Council tax is band B



Entrance hall

Lounge/diner

15' 6" x 11' 4" (4.72m x 3.45m)

Kitchen

8' 9" x 6' 4" (2.67m x 1.93m)

Bedroom

14' 5" x 8' 5" (4.39m x 2.57m)

Bathroom

8' 8" x 4' 8" (2.64m x 1.42m)

