

Waldorf Apartments Flat 20 Sandgate Road

Folkestone
CT20 2EE

£230,000 LEASEHOLD

DRAFT DETAILS...FOR SALE WITH BURNAP + ABEL.... (£230,000-£240,000) Burnap and Abel are delighted to introduce this two bedroom penthouse apartment located in the popular building of the Waldorf apartments close to Folkestone Town Centre. This property is in our opinion in good condition throughout and comprises of a large open plan living space, kitchen and two double bedrooms, both with en-suites. Additional benefits include a private balcony area, car parking space, separate W.C, Gas central heating and double glazing. This property is being offered with NO ONWARD CHAIN. For your chance to view call SOLE agent Burnap and Abel now on 01303 258590.



Entrance Hall

Lounge

19' 4" x 9' 6" (5.89m x 2.90m)

Dining Room

17' 10" x 12' 4" (5.44m x 3.76m)

Kitchen

9' 0" x 8' 0" (2.74m x 2.44m)

Bedroom

16' 5" x 12' 4" (5.00m x 3.76m)

En-Suite

8' 4" x 6' 2" (2.54m x 1.88m)

Bedroom

16' 4" x 13' 1" (4.98m x 3.99m)

En-Suite

8' 8" x 6' 6" (2.64m x 1.98m)

Private Balcony area

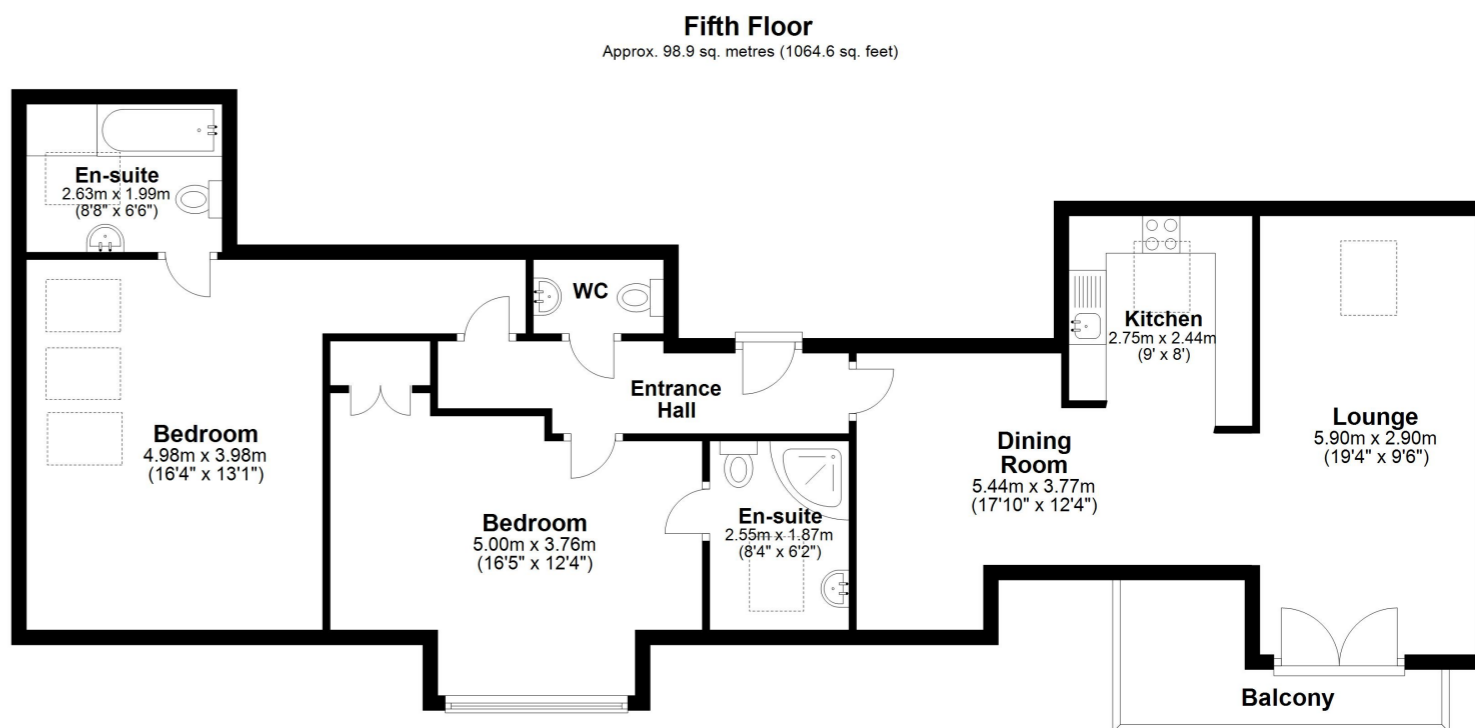
Car Parking Space

Lease

Currently Lease Length of 84 Years

Service charge

Service charge payable 2021/22 - £3,456



Total area: approx. 98.9 sq. metres (1064.6 sq. feet)

Whilst every attempt has been made to ensure the accuracy of the floor plan contained here, measurements of doors, windows, rooms and any other items are approximate and no responsibility is taken for any error, omission or mis-statement. This plan is for illustrative purposes only and should be used as such by any prospective purchaser. Plan produced using PlanUp.

