



NEWSON & BUCK
ESTATE AGENTS



5 Turrell Close, Wiggenhall St Germans, King's Lynn, Norfolk PE34 3FJ £375,000

Stunning Family Home!! Newson & Buck are proud to offer to the market this beautifully presented four bedroom family home, situated in Wiggenhall St Germans. The property comprises of an entrance hallway, lounge, kitchen diner, utility, play room, four bedrooms with the master and second bedrooms benefiting from en suites, a family bathroom. Further more there is a garage and an enclosed rear garden perfect for entertaining in! Viewing is highly recommended for this beautiful family home so please get in touch with our office today to arrange a viewing.

Entrance Hallway

Tiled flooring, one radiator, staircase to first floor with under stairs cupboard space.

Lounge

11' 8" x 21' 0" (3.56m x 6.40m) Fitted carpet, one double glazed window, double glazed patio doors leading to rear garden area, two radiators.

Kitchen Breakfast Room

10' 8" x 17' 0" (3.25m x 5.18m) Tiled flooring, integrated oven, induction hob with over head extractor, dishwasher, fridge freezer, sink drainer, one double glazed window, double glazed patio doors leading to rear garden area, one radiator

Utility

Tiled flooring, fitted cupboards, one radiator, stainless steel sink drainer, space for washing machine, rear door access to rear garden area.

W/C

Tiled flooring, low flush w/c, corner sink, one towel radiator

Dining Room / Play Room

10' 8" x 7' 10" (3.25m x 2.39m) Fitted carpet, one radiator, one double glazed window.

Landing

Fitted carpets, one double glazed window, one radiator

Bedroom One

10' 5" x 12' 0" (3.17m x 3.66m) Fitted carpet, one double glazed window, one radiator

En Suite

Tiled flooring, sink, shower, low flush w/c, one towel radiator, one double glazed window.

Bedroom Two

11' 10" x 8' 10" (3.61m x 2.69m) Fitted carpet, one double glazed window, one radiator

En Suite

Tiled flooring, pedestal sink, low flush w/c, one double glazed window, shower

Bedroom Three

10' 8" x 8' 2" (3.25m x 2.49m) Fitted carpet, one double glazed window, one radiator

Bedroom Four

7' 10" x 11' 10" (2.39m x 3.61m) Fitted carpet, one double glazed window, one radiator

Bathroom

Vinyl flooring, one towel radiator, one double glazed window, bathtub with shower attachment, low flush w/c.

Rear Garden

Enclosed rear garden with lawn and raised decking area.

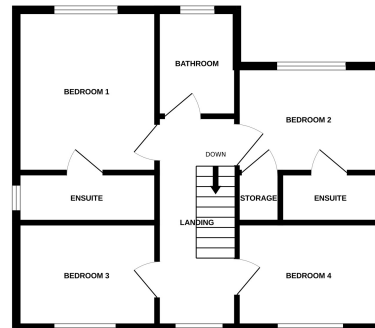
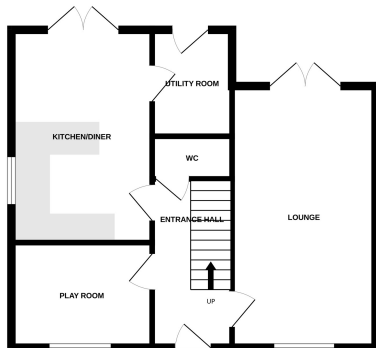
Garage

Up and over front door with lighting and electrics.



GROUND FLOOR

1ST FLOOR



Whilst every attempt has been made to ensure the accuracy of the floorplan contained here, measurements of doors, windows, rooms and any other items are approximate and no responsibility is taken for any error, omission or mis-statement. This plan is for illustrative purposes only and should be used as such by any prospective purchaser. The services, systems and appliances shown have not been tested and no guarantee as to their operability or efficiency can be given.
Made with Metropix ©2024