



**33 Lloyd Street
Newport
NP19 0JN**

Offers In Excess Of £130,000

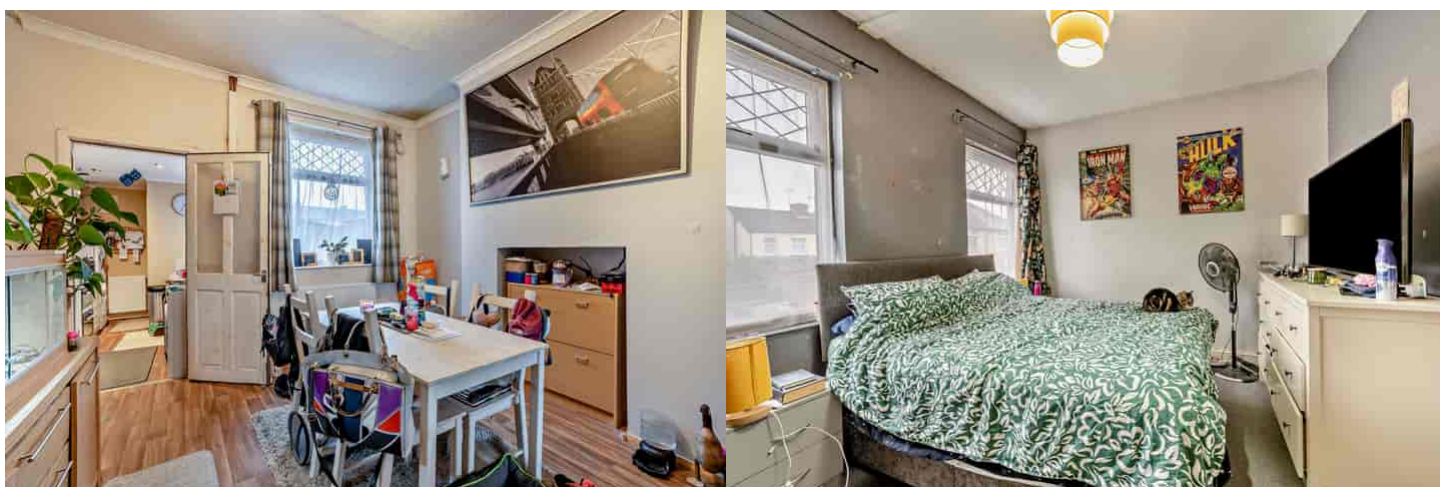
bettermove

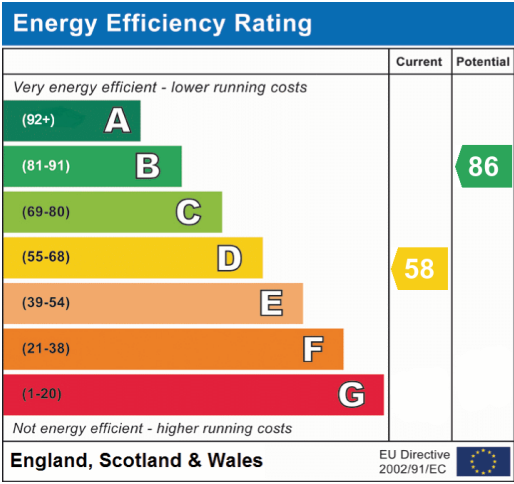
Lloyd Street Newport

This terraced house on Lloyd Street offers a cost-effective entry into the property market. With two bedrooms and one bathroom, it provides a practical layout for comfortable living. The freehold tenure ensures full ownership, making it an attractive choice for those looking to avoid leasehold complexities.

Located in Newport, the property benefits from its proximity to local amenities and transport links. The area is known for its community feel and accessibility, with schools and parks nearby adding to the appeal for families. The convenient location also makes it suitable for commuting to nearby towns and cities.

This property represents an excellent investment opportunity without breaking the bank. With demand likely to be high due to its affordability, interested parties are encouraged to act quickly to avoid disappointment.







20-22 Bridge End, Leeds, LS1 4DJ
t: 0330 004 0050 e: hello@bettermove.co.uk
www.bettermove.co.uk