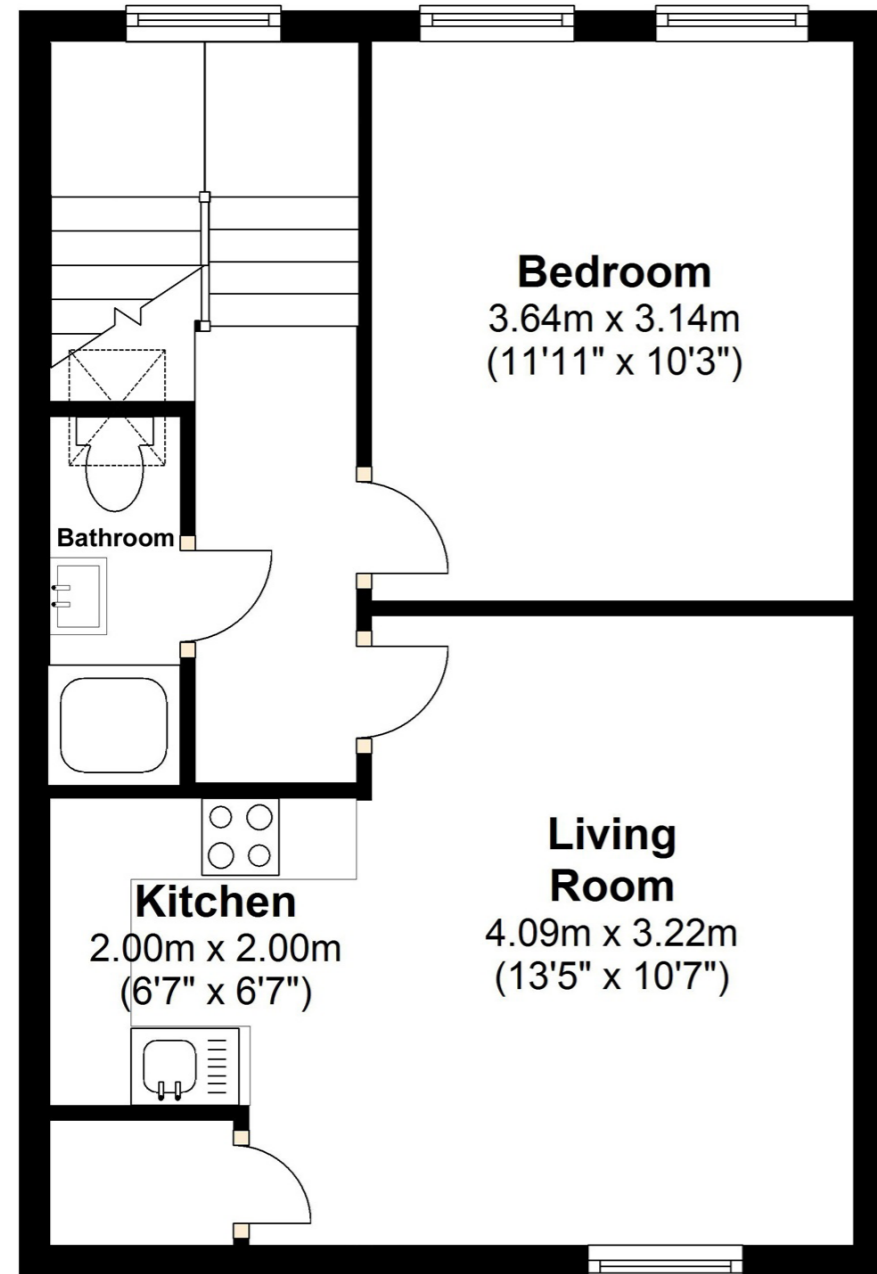


Second Floor

Approx. 39.5 sq. metres (424.9 sq. feet)



Total area: approx. 39.5 sq. metres (424.9 sq. feet)

For illustration purposes only - not to scale



1 BEDROOM FLAT

Haven Lane, W5

£370,000

This one bedroom apartment within a substantial Victorian house remains an ideal home for those who want to be in the heart of Ealing.

Within walking distance of Ealing Broadway station, this bright and spacious home is also attractive if you are looking for an investment.

FEATURES

- Period Conversion
- Double Bedroom
- Large Reception
- Built-in Storage
- Sash Windows
- Close to Ealing Broadway Station

1 BEDROOM FLAT

Haven Lane, W5

£370,000

Entering through the smart grey front door, the wide staircase leads you up to the first floor. Inside high ceilings, warm carpet and a picture window welcome you in.

The staircase wraps around and leads past the opaque glass walled shower room and double bedroom opposite. The living room at the front has been opened up to incorporate the kitchen to create a bright room perfect for entertaining. The kitchen has black granite worktops and cream coloured units arranged in a horseshoe shape so each appliance is easily to hand.

