



9 Whittle Court,
Knowlhill, Milton Keynes, MK5 8FT

Tel: 01908 231 551 
mail@elevationstateagents.com



**6 Wharf Lane, Old Stratford, Milton Keynes,
Northamptonshire, MK19 6AD**

£268,000 Leasehold

- 2 bedroom ground floor apartment
- Fitted kitchen with appliance
- Double glazed throughout
- Chain Free
- Allocate parking space
- Within walking distance to Stony Stratford
- EPC Rating



See our full selection of properties online at www.elevationstateagents.com



A converted TWO DOUBLE bedroom ground floor APARTMENT situated in the unique Saracen Mews development of just six.

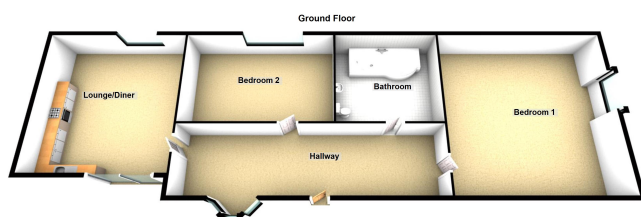
Modern day living interiors incorporated into a period style conversion, original beams exposed to add to the charm.

The property has an original wood beam and rustic exposed brick wall, fitted kitchen with oven, hob and extractor hood over, bathroom, allocated parking space, cycle rack and landscaped amenity space.

Old Stratford is located just over the bridge from Stony Stratford with its historical past and variety of shops, restaurants and public houses. It is also 6 miles from Milton Keynes shopping centre and mainline train station which has services to Euston in 36 minutes by fast train.

Disclaimer

Whilst we have endeavoured to prepare our sales particulars accurately none of the services, appliances or equipment have been tested. A buyer should satisfy themselves on such matters prior to purchase. Any measurements or distances mentioned in these particulars are for guide reference only. If such particulars are fundamental to a purchase, buyers should rely on their own enquiries. All enquiries should be directed to Elevation Estate Agents in the first instance.



These plans are for layout purposes only
Not produced to scale

See our full selection of properties online at www.elevationestateagents.com