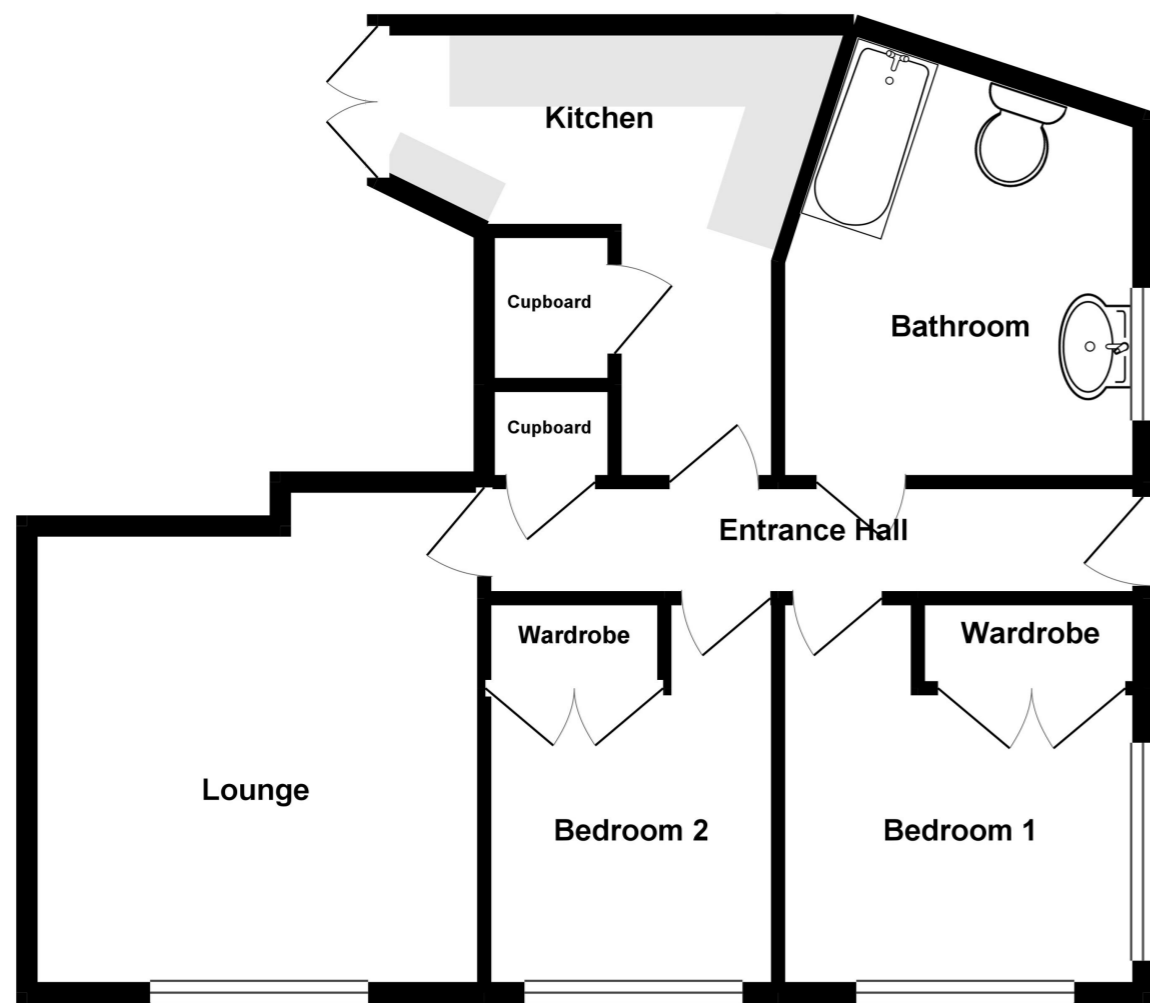
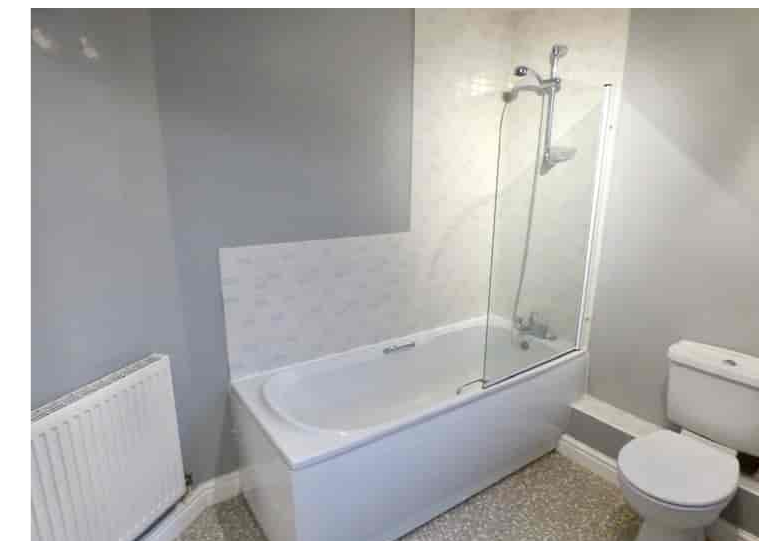


Floor plans

Ground Floor



Whilst every attempt has been made to ensure the accuracy of the floorplan contained here, measurements of doors, windows, rooms and any other items are approximate and no responsibility is taken for any error, omission or mis-statement. This plan is for illustrative purposes only and should be used as such by any prospective purchaser. The services, systems and appliances shown have not been tested and no guarantee as to their operability or efficiency can be given.
Made with Metropix ©2019



Interested in this property

Further information and image gallery available on our website at beebysproperties.co.uk.
Simply contact us for further information or to arrange a viewing:

Tel 01778 369369
sales@beebysproperties.co.uk

The small print

Viewing note
If you wish to view this property then please contact Beebys Properties Ltd directly as viewings are strictly by appointment only.

Important notice
In accordance with the Property Misdescriptions Act (1991) these sales particulars are to be taken as a general description of the property and are not part of any offer or contract. All text, measurements and photos are for guidance only and should not be relied upon as fact. None of the services or appliances have been tested by Beebys Properties Ltd. It is the duty of the purchaser to carry out any inspections, surveys and checks of the property. The copyright of all details, photographs and floor plans are exclusive to Beebys Properties Ltd.

Aykroft, Bourne, PE10
£775 pcm

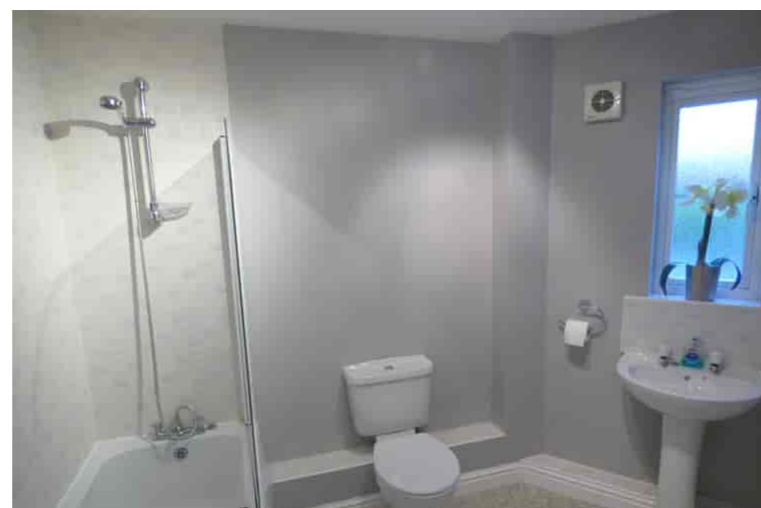
EPC Rating: TBC

			
x2	x1	x1	x0

Tel 01778 369369 enquiries@beebysproperties.co.uk
<http://www.beebysproperties.co.uk>



Property photographs



Description

****TWO BEDROOM GROUND FLOOR APARTMENT WITH PRIVATE ENTRANCE ON ELSEA PARK!**** Beebys Properties are excited to offer to let this well presented two bedroom apartment. Undergoing full redecoration, the property offers entrance hall leading to both bedrooms with built in wardrobes, lounge, storage cupboard, fitted kitchen with french doors to communal garden and large storage cupboard and a large bathroom with shower over bath. New carpet will be laid in the master bedroom. Two allocated parking spaces. There is a real sense of community within this block of apartments and it is located within easy walking distance to the bus stops in and out of Bourne and Tesco. Viewing is highly recommended to avoid disappointment.

Room dimensions

Energy Performance Certificate