



Checkline House, Darkes Lane, Potters Bar, Hertfordshire, EN6

£365,000

- **TWO BEDROOM APARTMENT**
- **MODERN FITTED KITCHEN**
- **CLOSE TO SHOPS / RESTAURANTS / AMENITIES**
- **UNDERGROUND PARKING**
- **120 YEARS LEASE**
- **MOMENTS FROM POTTERS BAR MAINLINE STATION**

108, High Street, Potters Bar, EN6 5AT

01707 245 555

www.home-counties.com

Checkline House, Darkes Lane, Potters Bar, Hertfordshire, .

EN6

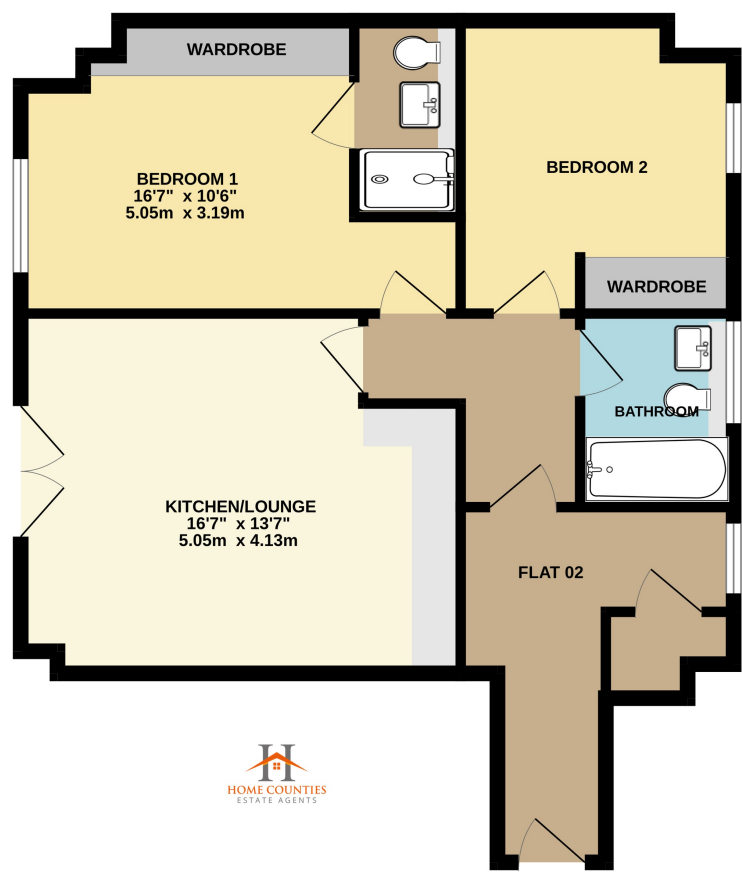
£365,000 Leasehold

Luxury Two Bedroom Apartment with Roof Terrace – Potters Bar

Located on the sought-after Darkes Lane High Street, this modern two-bedroom, two-bathroom apartment offers luxury living just 0.2 miles from Potters Bar Station, with fast access to King's Cross in under 15 minutes. This beautifully presented property features a spacious open-plan layout with a contemporary fitted kitchen, en-suite to the main bedroom, and access to a private roof terrace — perfect for outdoor entertaining.

Additional benefits include secure underground parking and lift access. Ideally situated moments from local shops, restaurants, and Sainsbury's supermarket, the apartment also lies within a highly regarded school catchment area. Excellent transport links with the A1 and M25 are just a short drive away, making this a convenient choice for commuters and families alike.

GROUND FLOOR



Whilst every attempt has been made to ensure the accuracy of the floorplan contained here, measurements of doors, windows, rooms and any other items are approximate and no responsibility is taken for any error, omission or mis-statement. This plan is for illustrative purposes only and should be used as such by any prospective purchaser. The services, systems and appliances shown have not been tested and no guarantee as to their operability or efficiency can be given.
Made with Metropix ©2025

