



- No Onward Chain
- One Bedroom Corner House
- Front and Side Gardens
- Off Road Parking
- Close To Shops And Amenities
- Essex University Access
- Newly Fitted Bathroom

**11 Henrietta Close, Wivenhoe,
Colchester, Essex. CO7 9HF.**

A chain free corner house in the Broadfields area of Wivenhoe. This excellent freehold property benefits from a generous front garden, Space to extend (STPP) private rear garden, driveway for several vehicles, living/ dining room, modern kitchen, bedroom and bathroom. Broadfields offers easy access to the local shops, bus stops, playing fields and parks alongside Essex University.



Property Details.

Ground Floor

Living/Dining room



15' 9" x 13' 1" (4.80m x 3.99m) Upvc window to side, radiator, stairs rising to first floor, TV point, telephone point and doorway to kitchen.

Kitchen



6' 8" x 5' 7" (2.03m x 1.70m) Window to front, tiled floor, a modern range of fitted units with roll edge worktops over, inset sink and drainer, matching eye level units, built in single oven and hob with extractor over, space for fridge, space and plumbing for washing machine, tiled splashbacks.

First Floor

Landing

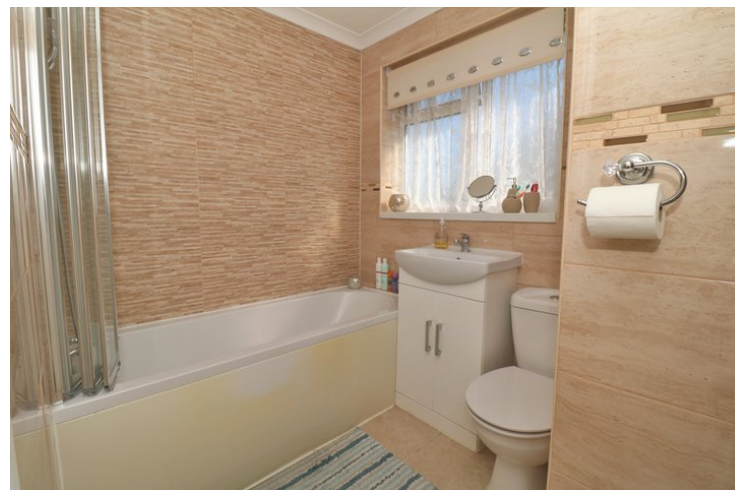
Doors to;

Bedroom One



13' 2" x 8' 5" (4.01m x 2.57m) Upvc window to front, Upvc window to side, radiator, fitted wardrobe, boiler cupboard, airing cupboard, loft access.

Bathroom



Obscure Upvc window to front, panel bath with shower and screen over, pedestal wash hand basin, close couple WC, radiator and tiled splashbacks.

Property Details.

Outside

Garden and Parking



Front Garden

Mainly laid to lawn and enclosed by dwarf walling, various shrubs and plants.

side Garden

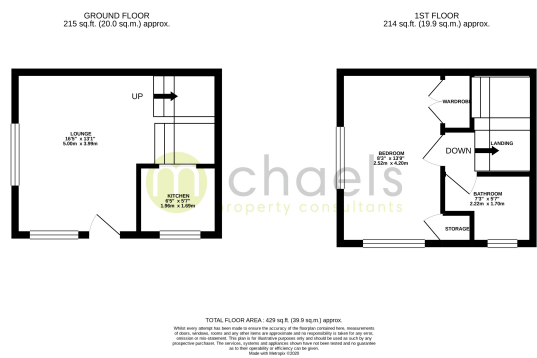
Mainly laid to lawn with garden shed and right of way from neighbouring gardens.

Driveway

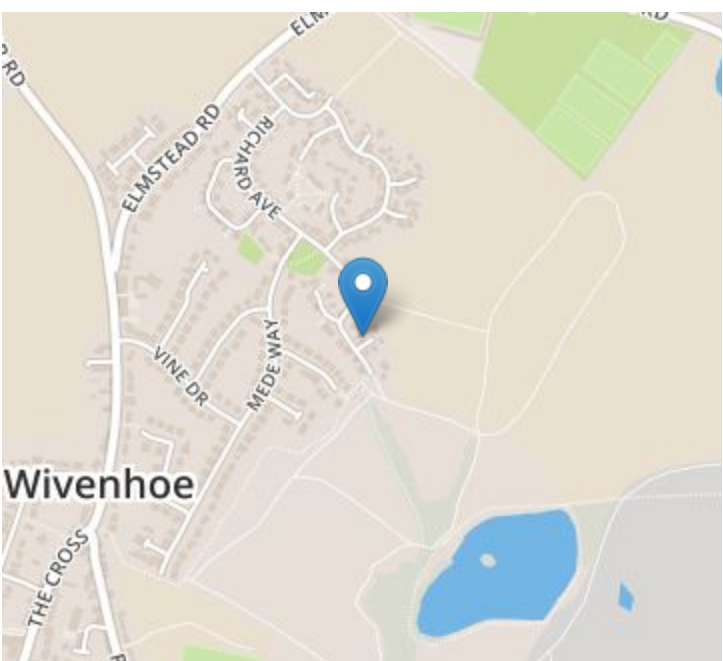
Hardstanding with space for several vehicles.

Property Details.

Floorplans



Location



Energy Ratings

