



33 Jarvis Brook Close, Bexhill-on-Sea, East  
Sussex, TN39 3UQ

**£349,950**

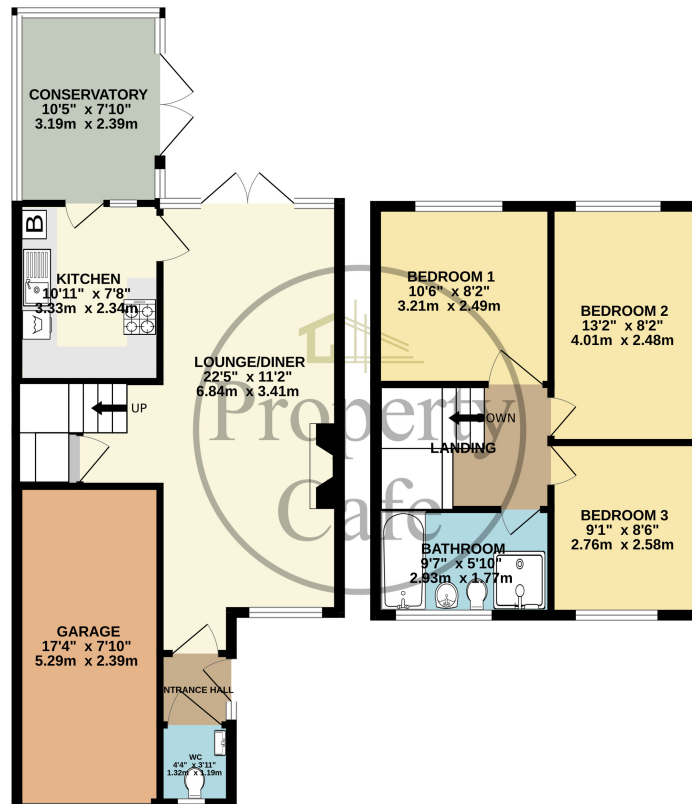


- Guide Price : £350,000 -£365,000
- Spacious & Well Presented Family Home
- Three Good Size Family Bedrooms
- Spacious Through Lounge-Diner
- UPVC Conservatory Overlooking Garden
- Ground Floor Cloak Room W.C
- Modern Refitted Kitchen
- Landscaped Rear Garden
- Block Paved Drive with Ample
- Integral Single Garage
- Sought After Cooden Location
- Modern X4 Piece Family Bathroom
- Central Heating & D.Glazed
- Sold With No Onward Chain



GROUND FLOOR  
596 sq.ft. (55.4 sq.m.) approx.

1ST FLOOR  
397 sq.ft. (36.9 sq.m.) approx.



TOTAL FLOOR AREA : 993 sq.ft. (92.2 sq.m.) approx.

Whilst every attempt has been made to ensure the accuracy of the floorplan contained here, measurements of doors, windows, rooms and any other items are approximate and no responsibility is taken for any error, omission or mis-statement. This plan is for illustrative purposes only and should be used as such by any prospective purchaser. The services, systems and appliances shown have not been tested and no guarantee as to their operability or efficiency can be given.

Made with Metropix ©2023

