



The Vale, London, W3 7JT

Cow & Co
LONDON



Guide price £325,000-£425,000. A lovely two bedroom ground floor apartment situated in an imposing double fronted period building. The property offers bright and spacious accommodation along with contemporary style fixtures and fittings.

Located moments from the fashionable Churchfield Rd that provides specialist, well renowned restaurants, great cafes and an art gallery that was a prominent supporter of the large art installation on the corner of Churchfield and Myrtle Rd. There are also local neighbourhood pubs, hairdressers, greengrocers and a general great variety of commercial offerings. Great local schools are another main reason the area is well considered for families moving into the area.

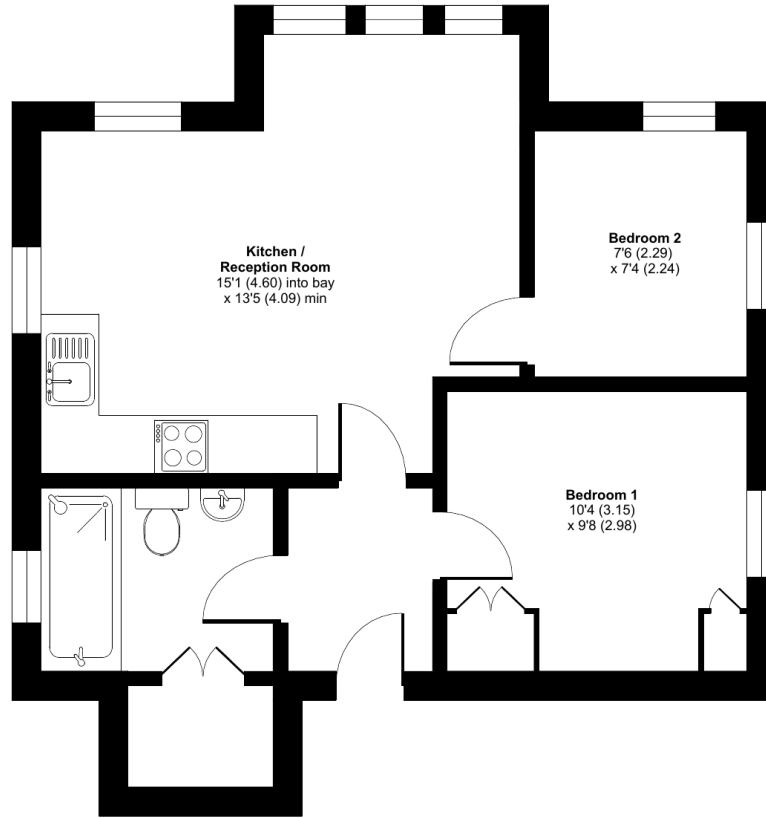


- Two double bedroom ground floor apartment
- Set within a large double fronted converted period building
- Large open plan kitchen family room
- Security entry phone system
- Long lease
- Close to a wealth of amenities and transport links
- No onward chain
- Viewing by appointment only

The Vale, London, W3

Approximate Area = 503 sq ft / 46.7 sq m

For identification only - Not to scale



GROUND FLOOR



Floor plan produced in accordance with RICS Property Measurement Standards incorporating International Property Measurement Standards (IPMS2 Residential). © nchecon 2024. Produced for Cow & Co Properties Ltd. REF: 1080000

Tel: 0208 065 0010
Email: thehub@cowandco-london.com
Web: cowandco-london.com

Agents note: All measurements are approximate and whilst every attempt has been made to ensure accuracy they are for general guidance only and must not be relied on. The fixture and fittings referred to have not been tested and therefore no guarantee can be given that they are in working order. Internal photographs are reproduced for general information and it must not be inferred that any item shown is included with the property.

Cow & Co
LONDON