



**Lichfield Grove, Finchley Central, N3**

**£2,000**  
pcm



## Lichfield Grove, Finchley Central, N3

Located in the heart of Finchley Central and offered in excellent condition is this well-proportioned two-bedroom apartment boasting it's own private entrance and rear garden.

Spanning 749 Sq Ft (69 Sq M), the property offers a spacious reception room, a generous principal bedroom and a fully fitted kitchen. Offered unfurnished and available now.

Lichfield Grove enjoys a prime position just 0.4 miles from Finchley Central Underground Station (Northern Line), placing local shops, cafés, and transport links within easy reach.

### Features

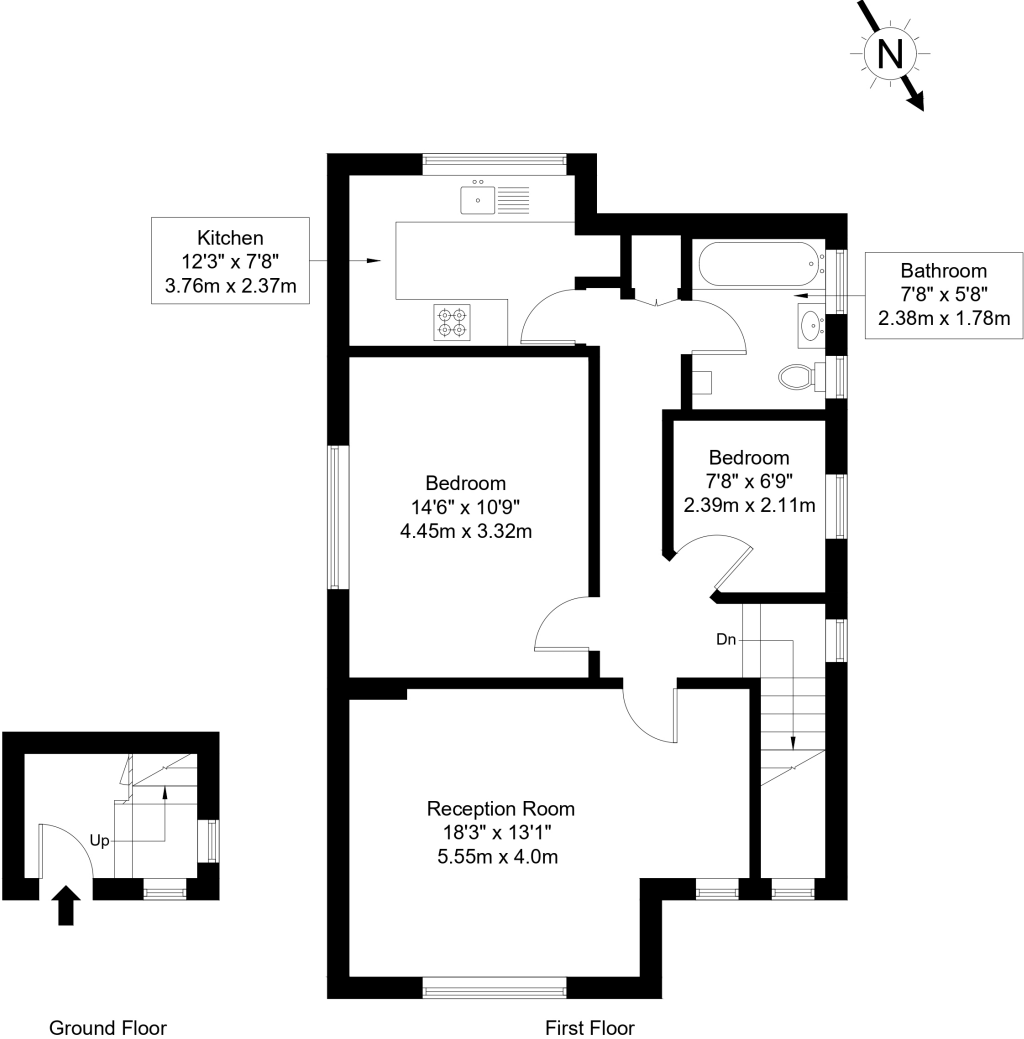
- Located In The Heart Of Finchley Central
- Two Bedroom Apartment
- Available Now
- Offered Unfurnished
- Private Entrance
- Private Rear Garden
- Well Proportioned Flat
- Generous Principal Bedroom
- Excellent Condition



Lichfield Grove,  
Finchley Central, N3

# Lichfield Grove, N3 2JR

Approx Gross Internal Area = 69.58 sq m / 749 sq ft



Ref :

Copyright **BLEUPLAN**

The Floor plan is not to scale and measurements and areas shown are approximate and therefore should be used for illustrative purposes only. The plan has been prepared in accordance with the RICS code of Measuring Practice and whilst we have confidence in the information produced it must not be relied on. Maximum lengths and widths are represented on the floor plan. If there is any aspect of particular importance, you should carry out or commission your own inspection of the property.  
Copyright @ BLEUPLAN