



BEAULIEU
ESTATE AGENTS



10 Linge Avenue, Beaulieu Park, Chelmsford, Essex CM1 6BY
£1,000,000 - Freehold



PROPERTY DESCRIPTION

**** OPEN HOUSE SATURDAY MAY 11th - CALL TO BOOK A SLOT!**** BUILT TO 'THE GRANDIS' STYLE AND HEAVILY EXTENDED AND CONVERTED TO CREATE EVEN MORE SPACE FOR THE FAMILY! OFFERING 6/7 BEDROOMS, STUNNING VIEWS & MUCH MORE!

This contemporary six-bedroom dwelling embodies the practicality of three-story living, tailored to suit modern lifestyles. The living room on the first floor, elevated above street level, offers an exclusive perspective with picturesque views, fostering an intimate ambiance for gatherings.

On the ground level, amenities include a gym/garage, an open-plan kitchen/living/dining area, and a separate reception room currently utilized as a children's playroom. Seamlessly connected to the spacious rear garden, this area invites abundant natural light and fresh air, enhancing the overall living experience.

A standout feature is the main bedroom suite situated on the second floor, boasting enhanced seclusion with its private terrace, fitted wardrobes, and ensuite bathroom facilities.

This meticulously designed abode prioritizes both functionality and aesthetics, striking a harmonious balance between communal areas and private sanctuaries across its three levels. Its thoughtful layout and attention to detail make it an exceptional choice for contemporary living, appealing to those seeking a modern yet comfortable lifestyle.

Living at Beaulieu Park means you will have all your daily requirements in close proximity be it shopping or eating out, fitness facilities or entertainment. For instance, there are plenty of local amenities within the development, such as Sainsbury's Local, a dental and veterinary surgery, Costa Coffee and Domino's. The recently opened school and a community centre are also within walking distance. Chelmsford City Centre offers most of the high street retailers, independent stores and ample entertainment opportunities. Chelmsford Railway station is also approximately 3 miles away and a speedy bus takes you there from Beaulieu Park in just 15 minutes. Beaulieu Park Train Station is also set to be finished being built 2025 which will be a short walk from this family home, with main line trains to London Liverpool Street in approximately 35 minutes!



CALL US TODAY TO ARRANGE A VIEWING ON THIS STUNNING FAMILY HOME!

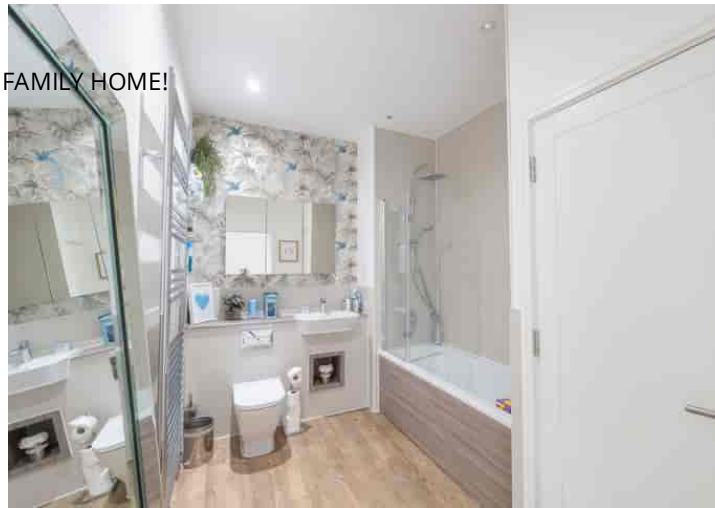
Entrance Hall - 16'5 x 7

WC - 7'6 x 5

Utility - 7'6 x 4'10

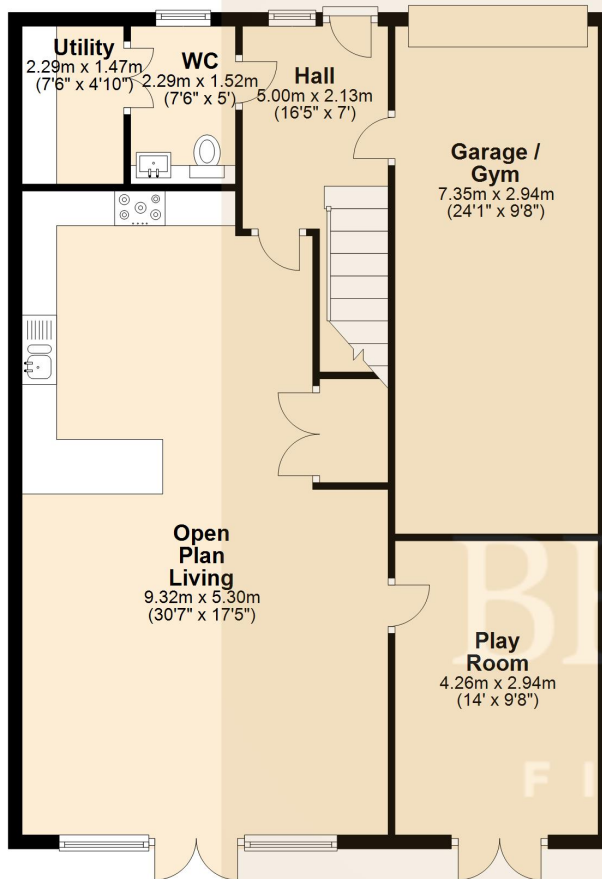
Open Plan Living - 30'7 x 17'5

Storage



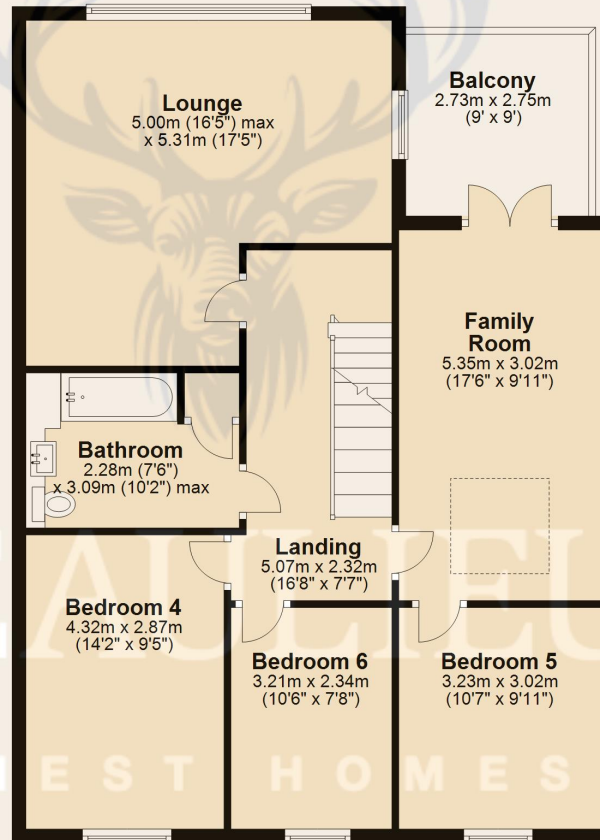
Ground Floor

Approx. 97.7 sq. metres (1051.7 sq. feet)



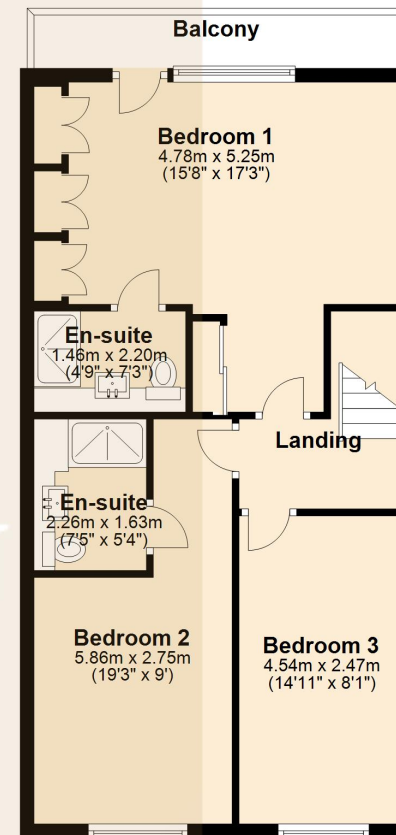
First Floor

Approx. 91.0 sq. metres (979.2 sq. feet)



Second Floor

Approx. 57.5 sq. metres (618.5 sq. feet)



Total area: approx. 246.1 sq. metres (2649.4 sq. feet)