



# Maples Court

Bedford Road | Hitchin | Hertfordshire | SG5 1HF

[www.stonegate-estates.co.uk](http://www.stonegate-estates.co.uk)



# MAPLES COURT

## Property Description

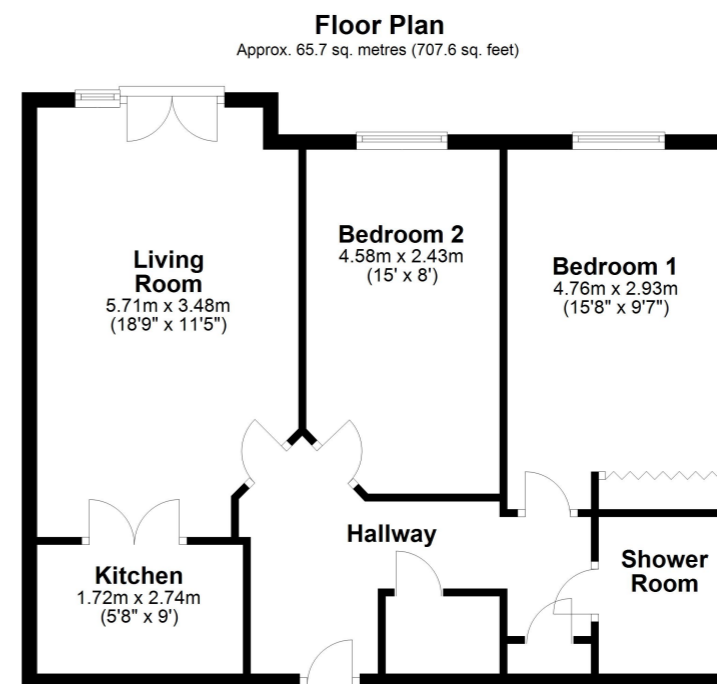
A two double bedroomed retirement flat set on the second floor of this highly regarded block of McCarthy and Stone built apartments. The apartment has been thoroughly updated and redecorated and has a completely new feel to this popular retirement location.

Maples Court is ideally placed adjacent to a Waitrose supermarket and close to Butts Close open space. Designated for the over 60s, there is a House Manager, communal lounge and laundry room, a Guest Suite and well maintained communal gardens. The apartment has uPVC double glazing and electric storage heating, 'Careline' alarm system and secure entry phone system and a refitted Kitchen and Shower room.

A level walk from the town centre, Maples Court is in a highly convenient location, with Hitchin's town centre providing a broad selection of shops, traditional market, churches and a variety of restaurants and bars. There is a mainline railway station with regular services to Kings Cross and the area is centrally placed for both the A1(M) and M1 motorways.

**£280,000 Leasehold**





Total area: approx. 65.7 sq. metres (707.6 sq. feet)

All measurements shown are approximate and for guidance only. Garages and workshops are not included in any gross floor areas unless integral to the main building where they will be included.  
Plan produced using PlanUp.



- Two Bedroom Retirement Apartment
- Lift to All Floors
- No Onward Chain
- New Kitchen
- New Shower Room
- New Carpets Throughout
- Juliet Balcony To Living Room
- Communal Gardens and Parking
- Beautifully refurbished
- Lease - 95 years remaining

EPC Rating:

Stonegate Estate Agents

01462 438979

[sales@stonegate-estates.co.uk](mailto:sales@stonegate-estates.co.uk) | [www.stonegate-estates.co.uk](http://www.stonegate-estates.co.uk)

