



*Asking Price*

£365,000

Freehold

HEATHER CLOSE, BOURNEMOUTH BH8 0ER



- ◆ MID-TERRACED HOUSE
- ◆ THREE DOUBLE BEDROOMS
- ◆ OFF ROAD PARKING
- ◆ SOUTH EASTERLY REAR ASPECT

A well proportioned, three bedroom, three reception room, mid-terrace house which has been sympathetically extended and offers gas fired heating, double glazing and off road parking for two vehicles.

## Property Description

The home sits towards the entrance of this residential cul de sac which is close to Muscliffe Primary School. The accommodation has been sympathetically extended and comprises of a living room, separate dining room, internal study room and kitchen to the ground floor. The first floor offers three double bedrooms with two having an extensive selection of fitted furniture, along with a family bathroom.

## Gardens and Grounds

The front garden is primarily laid to a kept lawn and there is a driveway to the left hand side. The driveway is suited to two vehicles being parked in tandem with the second space benefiting from being a covered carport, which is integrated to the house. The rear garden is south-easterly in orientation and is predominantly laid to lawn. There is a patio spanning the rear elevation of the home and the boundaries are clearly denoted by close panel fencing.

## Location

Bournemouth is a large coastal resort town with award-winning beaches on the south coast of England. To the east lies the famous Jurassic Coast – a World Heritage Site. Bournemouth has excellent transport connections via rail, bus, road or sea. The town has historic tropical gardens, golden sands and surfing, panoramic views from the clifftops and a bustling town centre. There are plenty of indoor and outdoor attractions including museums, galleries and many cosmopolitan restaurants, cafes and bars. Bournemouth's climate and location has made it a popular destination for visitors. The town is also a regional centre of business and home of the Bournemouth International Centre (BIC).



Size: 986 sq ft (91.6 sq m)

Heating: Gas fired (Vented) Serviced annually

Glazing: Double glazed

Parking: Driveway and carport

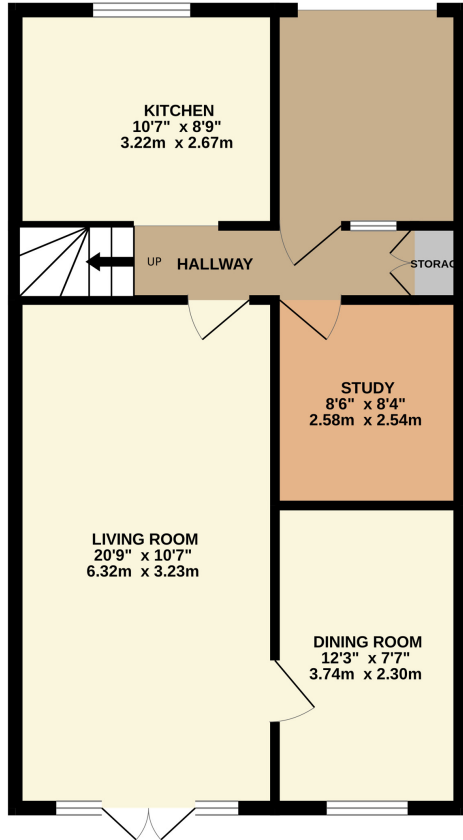
Garden: South East facing

Main Services: Electric, gas, telephone, water, drains

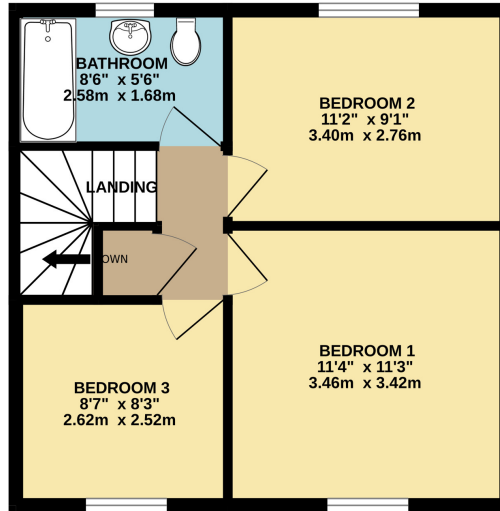
Local Authority: BCP Council

Council Tax Band: C

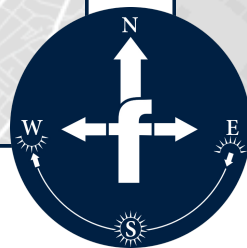
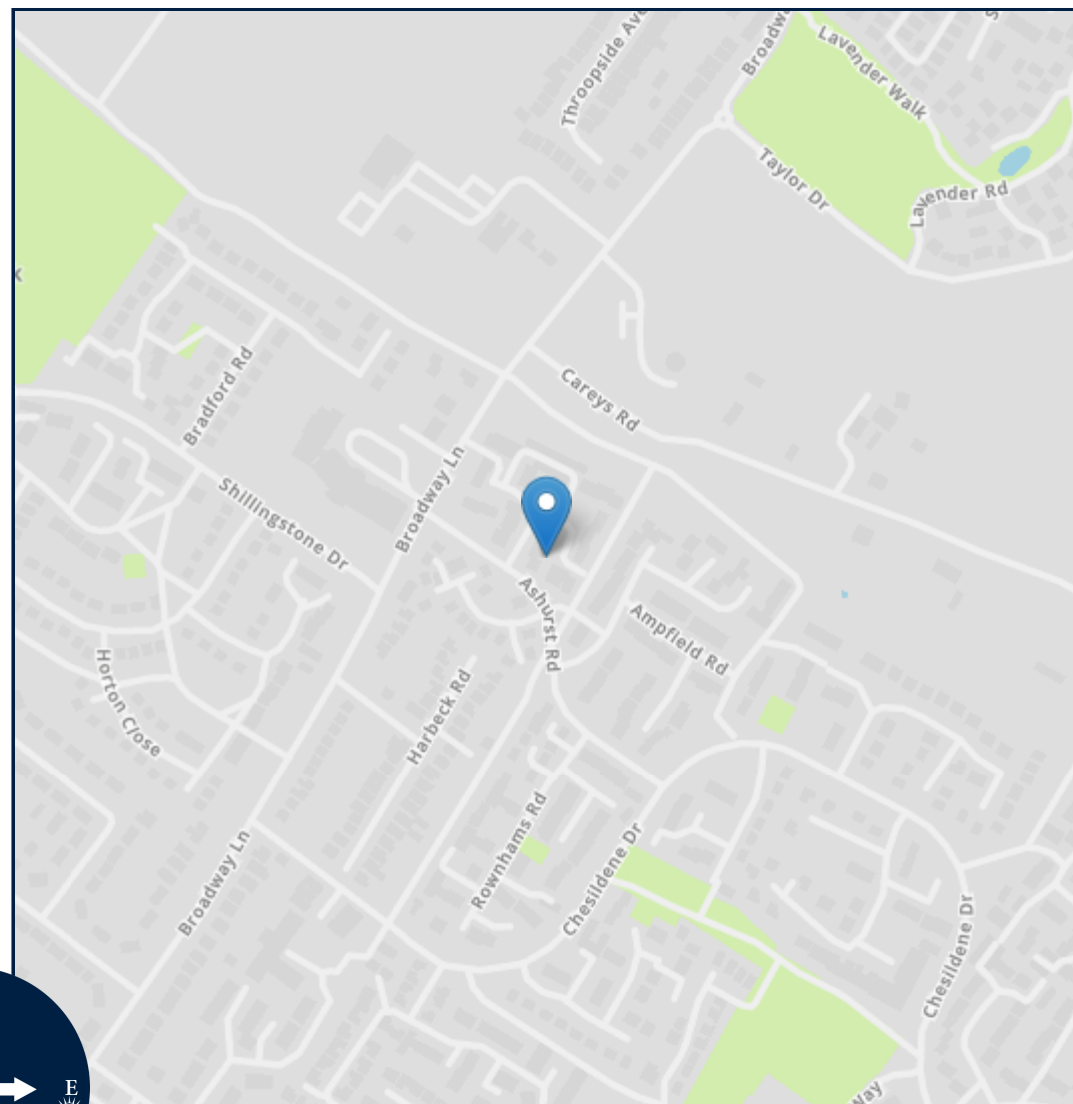
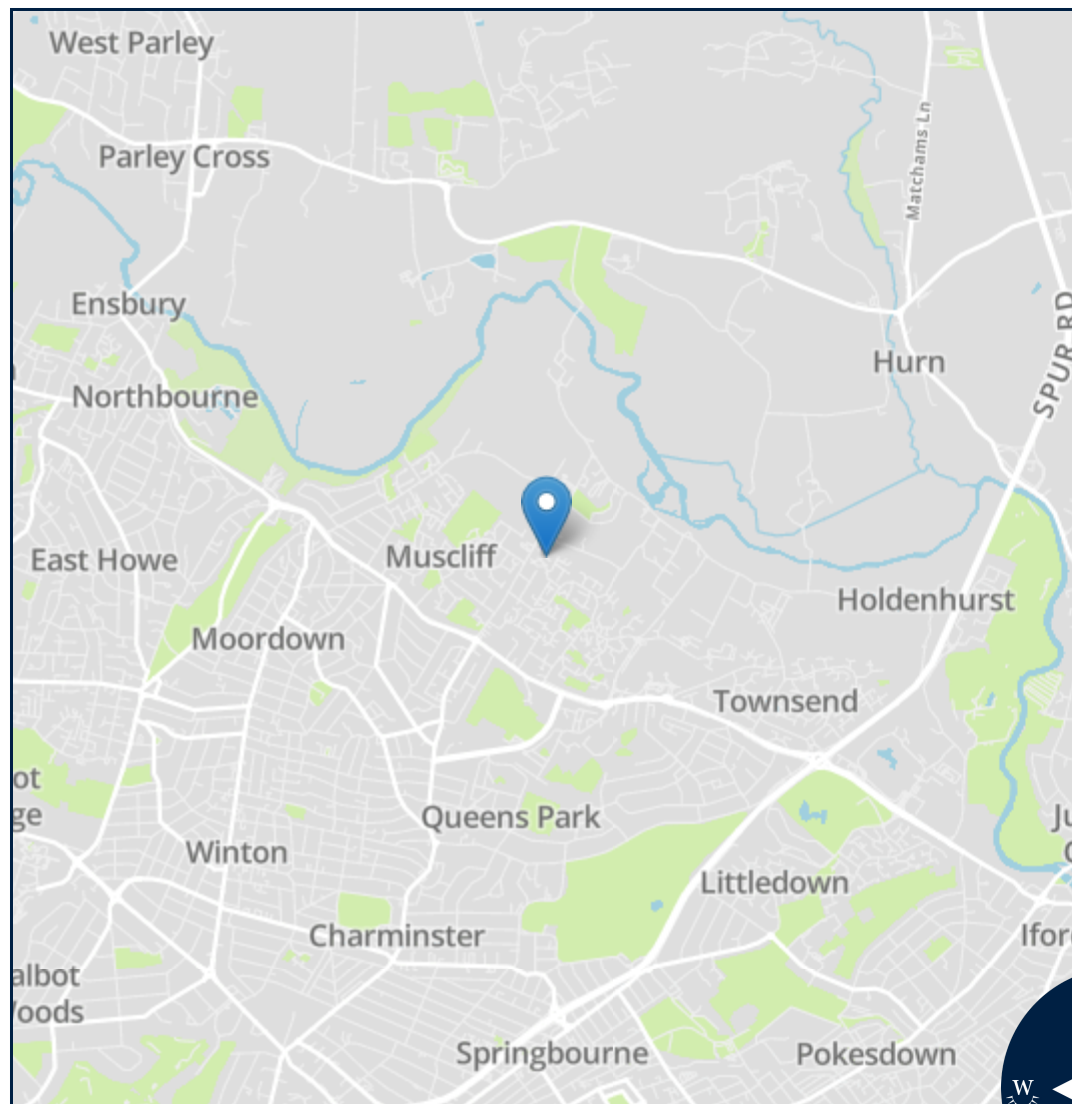
GROUND FLOOR  
586 sq.ft. (54.4 sq.m.) approx.



1ST FLOOR  
401 sq.ft. (37.2 sq.m.) approx.



TOTAL FLOOR AREA : 986 sq.ft. (91.6 sq.m.) approx.  
Measurements are approximate. Not to scale. Illustrative purposes only  
Made with Metropix ©2024



Important notice: Fisks Estate Agents, their clients and any joint agents give notice that 1: They are not authorised to make or give any representations or warranties in relation to the property either here or elsewhere, either on their own behalf or on behalf of their client or otherwise. They assume no responsibility for any statement that may be made in these particulars. These particulars do not form part of any offer or contract and must not be relied upon as statements or representations of fact. 2: Any areas, measurements or distances are approximate. The text, photographs and plans are for guidance only and are not necessarily comprehensive. It should not be assumed that the property has all necessary planning, building regulation or other consents and Fisks Estate Agents have not tested any services, equipment or facilities. Purchasers must satisfy themselves by inspection or otherwise.



12 East Street, Wimborne,  
Dorset, BH21 1DS  
[www.fisksestateagents.co.uk](http://www.fisksestateagents.co.uk)  
01202 880000