





This well-appointed detached three-bedroom house is situated at the end of a sought-after cul-de-sac in the village of Barham, south of Canterbury, and conveniently close to the Primary school. The ground floor offers a porch, entrance hall, a spacious living/dining room with an open fire, a kitchen and breakfast room, utility space and a WC. Upstairs, the first floor comprises a landing, three bedrooms, and a bathroom featuring both a bath and shower. Outside, the property includes a front garden, driveway, and the front of the garage/store. The rear garden is complemented by a home office at the rear of the garage and a detached timber-clad family room/office, providing flexible accommodation in a highly desirable location. EPC RATING = D

Guide Price £485,000

Tenure Freehold

Property Type Detached House

Receptions 2

Bedrooms 3

Bathrooms 1

Parking Driveway

Heating Gas

EPC Rating D

Council Tax Band D
Canterbury City Council



Situation

This beautiful property is situated in a central position in the sought after village of Barham. The village is situated at the top of the Elham Valley and to the south of the city of Canterbury. Local amenities include a primary school and village community store and post office. The City of Canterbury has a range of secondary schools. A2, Approx. 2 miles. Canterbury West railway station with high speed services Approx. 8 miles. Channel Tunnel Terminal Approx. 13 miles. There is a regular bus service from the village to both Canterbury and Folkestone.

The Accommodation comprises

Ground floor

Porch

Entrance hall

Living/dining room

22' 4" x 14' 9" (6.81m x 4.50m)

Kitchen

9' 9" x 9' 7" (2.97m x 2.92m)

Breakfast room

9' 2" x 8' 4" (2.79m x 2.54m)

Utility space

WC





Home office

9' 5" x 7' 8" (2.87m x 2.34m)

First floor

Landing

Bedroom one

14' 7" x 12' 2" (4.45m x 3.71m) plus wardrobes

Bedroom two

14' 8" x 9' 8" (4.47m x 2.95m)

Bedroom three

9' 4" x 8' 1" (2.84m x 2.46m)

Bathroom

Outside

Front garden

Driveway

Front of garage/store

10' 5" x 8' 5" (3.17m x 2.57m)

Rear garden

Detached family room/office

22' 3" x 10' 9" (6.78m x 3.28m)







Approximate Gross Internal Area (Including Low Ceiling) = 110 sq m / 1180 sq ft
 Outbuildings / Garage = 30 sq m / 328 sq ft

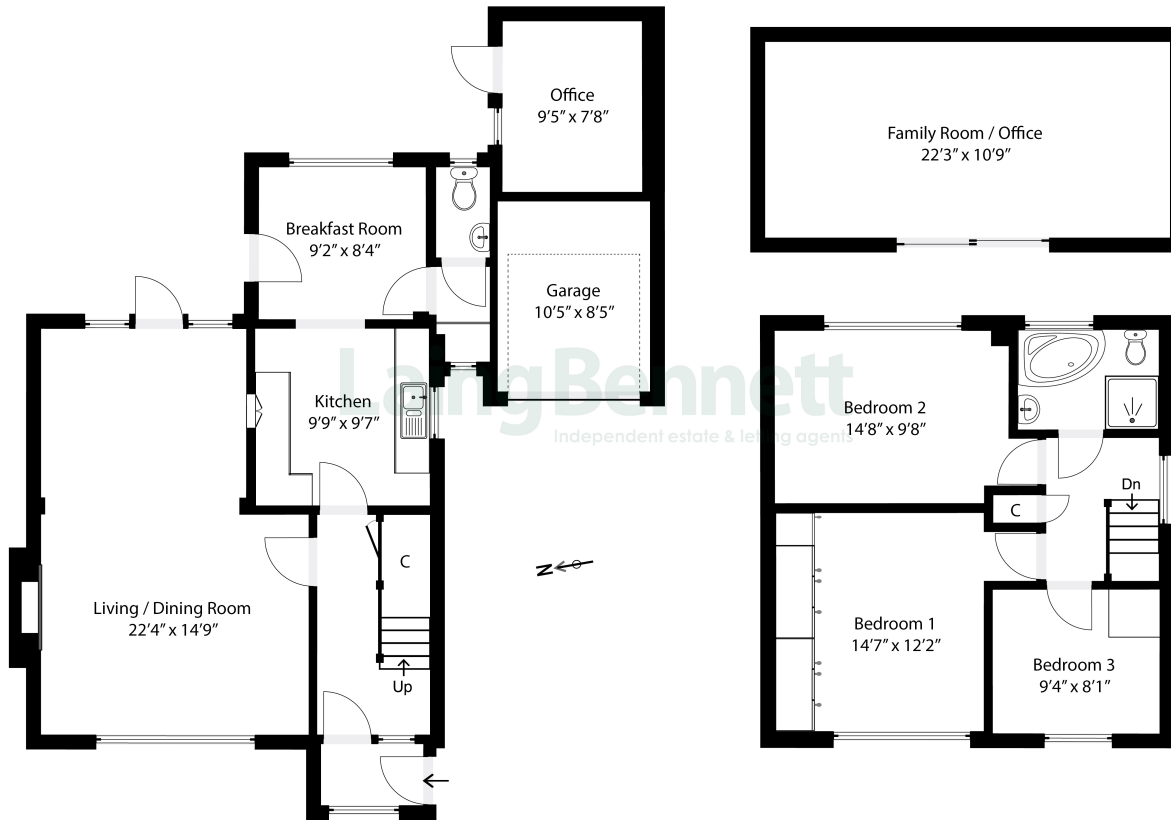
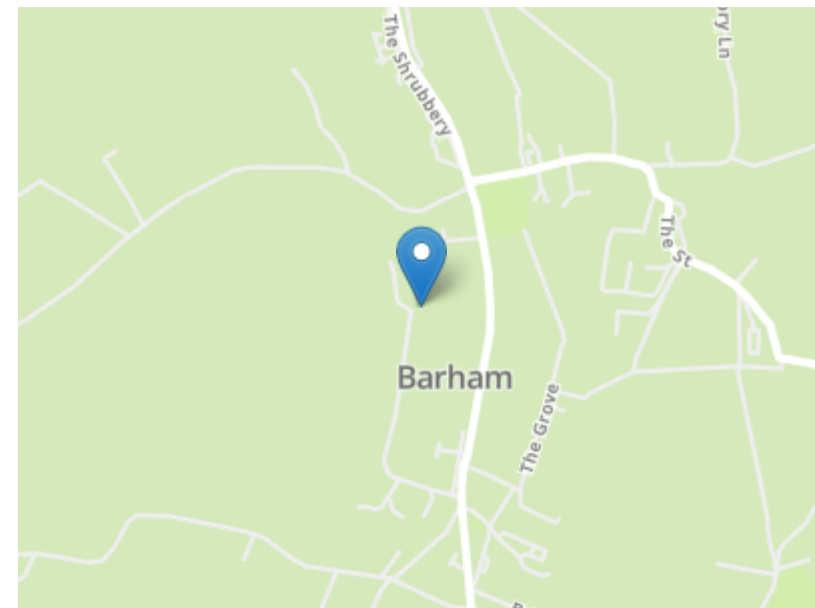


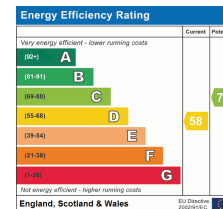
Illustration for identification purposes only. Measurements are approximate. Dimensions given are between the widest points.
 Not to scale. Outbuildings are not shown in actual location.
 © Unauthorised reproduction prohibited - jennykemp1000@gmail.com



Need to book a viewing?

If you would like to book a viewing please contact our office on 01303 863393 or email sales@laingbennett.co.uk

See all our properties at



www.laingbennett.co.uk

The Estate Office
 8 Station Road
 Lyminge
 Folkestone
 Kent
 CT18 8HP



These property details are intended to give a fair description and give guidance to prospective Purchaser/Tenant. They do not constitute an offer or contract of Sale/Tenancy and all measurements are approximate. While every care has been taken in the preparation of these details neither Laing Bennett Ltd nor the Vendor/ Landlord accept any liability for any statement contained herein. Laing Bennett Ltd has not tested any services, appliances, equipment or facilities, and nothing in these details should be deemed to be a statement that they are in good working order or that the property is in good structural condition or otherwise. We advise all applicants to commission the appropriate investigations before Exchange of Contracts/entering into a Tenancy Agreement. It should not be assumed that any contents/furnishing, furniture etc. photographed are included in the Sale/Tenancy, nor that the property remains as displayed in the photographs. No person in the employment of Laing Bennett Ltd has authority to make or give any representation or warranty whatever in relation to this property.