



KUBIE GOLD
ASSOCIATES

FELLOWS ROAD SWISS COTTAGE NW3



- LARGE ONE BED APARTMENT
- RAISED GROUND FLOOR
- PERIOD CONVERSION

- HIGH CEILINGS IN RECEPTION
- WOOD FLOOR THROUGHOUT
- AVAILABLE IMMEDIATELY

£575 per week

SALES, LETTINGS & PROPERTY MANAGEMENT

Tel:

020 7563 7272

36 Ivor, Regents Park, London, NW1 6EA

Email: info@kubie-gold.co.uk Website: www.kubie-gold.co.uk

Kubie Gold Associates is the trading name of Kubie Gold Associates Ltd
Company Registration No. 7271501 registered in England and Wales

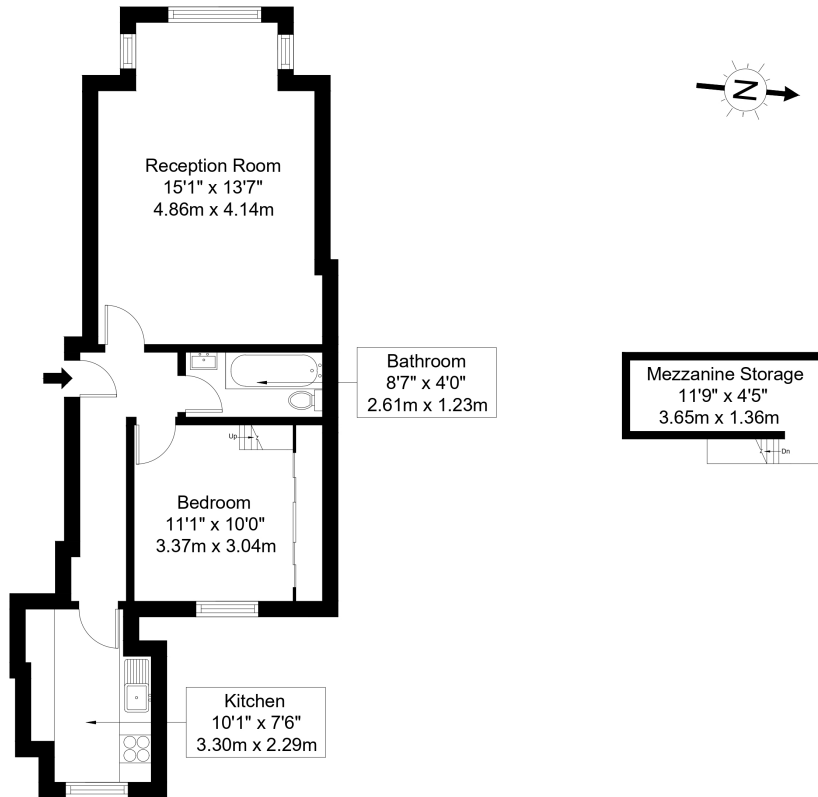


Fellows Road, NW3

Large and spacious well proportioned one bedroom apartment in a classic period conversion, set on the raised ground floor of impressive period building, large reception with wood floors high ceilings, double bedroom with fitted wardrobes providing ample storage, separate fully fitted kitchen, full family bathroom with shower and bathtub, property benefits from wood floors throughout the property, situated on a quiet residential tree lined road, a short walk to all shops and restaurants and amenities of Finchley Road, minutes from Swiss Cottage Tube Station, available immediately.

Fellows Road, NW3 3JH

Approx Gross Internal Area = 58.75 sq m / 632 sq ft



Raised Ground Floor

Ref :

Copyright **BLEU PLAN**

The Floor plan is not to scale and measurements and areas shown are approximate and therefore should be used for illustrative purposes only. The plan has been prepared in accordance with the RICS code of Measuring Practice and whilst we have confidence in the information produced it must not be relied on. If there is any aspect of particular importance, you should carry out or commission your own inspection of the property.

Copyright @ BLEUPLAN

Local Authority:

Camden

Tax Band:

Band E

Energy Efficiency Rating		Current	Potential
Very energy efficient - lower running costs			
(92+)	A		
(81-91)	B		
(69-80)	C		78
(55-68)	D	61	
(39-54)	E		
(21-38)	F		
(1-20)	G		
Not energy efficient - higher running costs			
England, Scotland & Wales		EU Directive 2002/91/EC	

