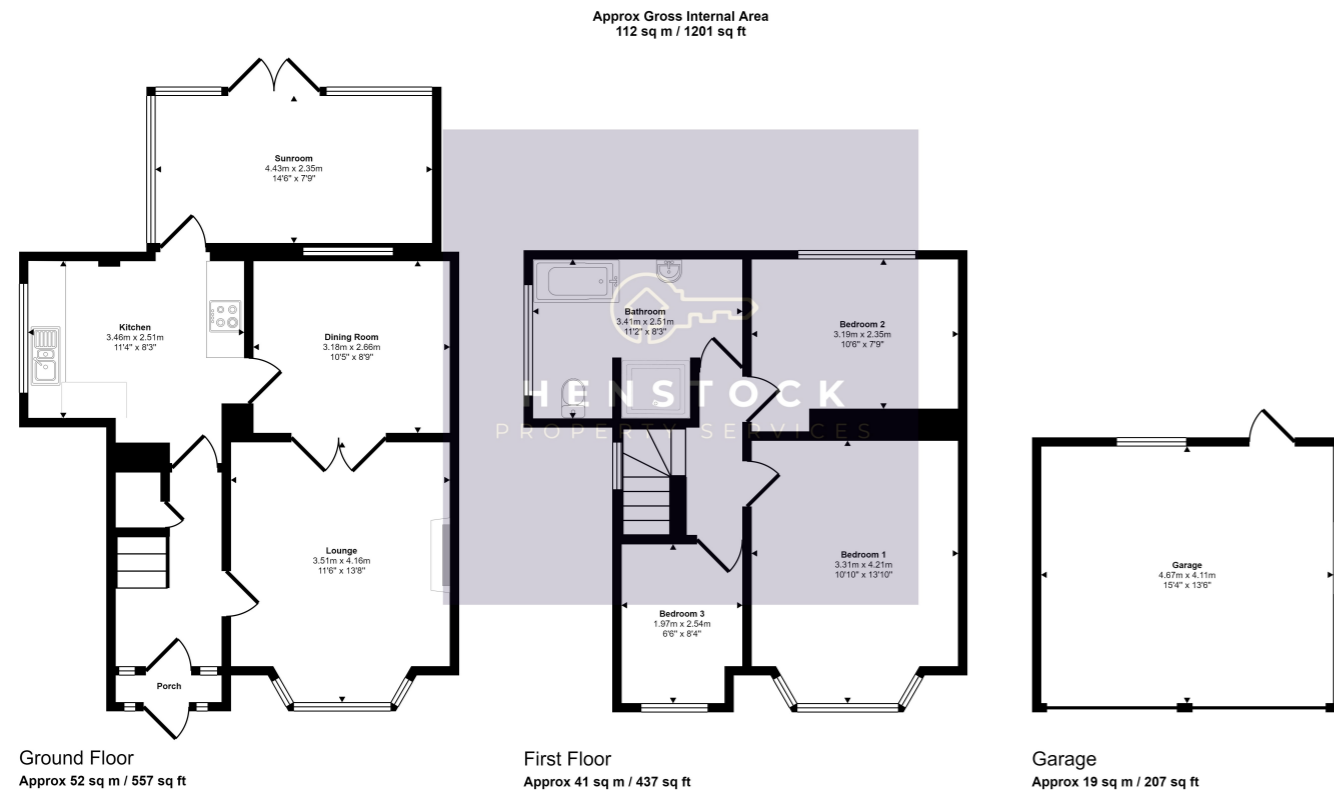




HENSTOCK
PROPERTY SERVICES

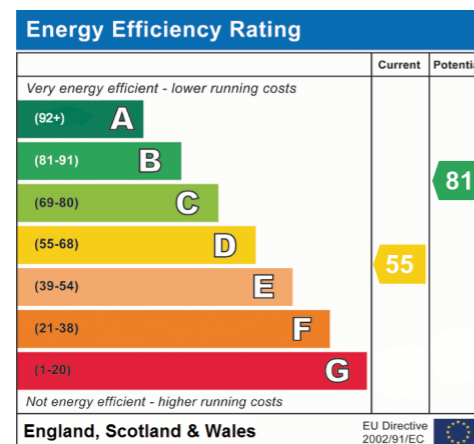


This floorplan is only for illustrative purposes and is not to scale. Measurements of rooms, doors, windows, and any items are approximate and no responsibility is taken for any error, omission or mis-statement. Icons of items such as bathroom suites are representations only and may not look like the real items. Made with Made Snappy 360.



15 Shackliffe Road, Moston, Manchester, Lancashire M40 5QT

- 3 BEDROOMED SEMI DETACHED
- NO CHAIN
- GAS CENTRAL HEATING
- FREEHOLD
- COUNCIL TAX BAND B
- LARGE DETACHED GARAGE



Offers in Region of £180,000



PROPERTY DESCRIPTION

Henstock Property Services are pleased to market this 3 bedroomed semi detached home in need of renovating throughout. The living accommodation briefly comprises; entrance porch into hallway, front lounge open to dining room, kitchen, rear sunroom, 3 bedrooms and a bathroom. The property also has the benefit of gas central heating, mostly double glazed windows, large detached garage and good sized gardens to front and rear. Ideally situated within easy reach of schools, shops/supermarkets, leisure/fitness facilities, good public transport services and a short distance from the M60 & M62 motorway links.

GROUND FLOOR

Entrance

Porch into hallway.

Hallway with under stair storage, ornate stained glass panels around front door, single radiator.

Front Lounge

3.51m x 4.16m (11' 6" x 13' 8") into bay window to front, feature fireplace, French doors to dining room, double radiator.

Dining Room

3.18m x 2.66m (10' 5" x 8' 9") views to rear, double radiator.

Kitchen

3.46m x 2.51m (11' 4" x 8' 3") L shaped, oak units with white marble style worktops, 1 1/2 bowl sink with chrome mixer tap, single electric oven, ceramic hob, door to sunroom.

Sunroom

4.43m x 2.35m (14' 6" x 7' 9") double patio doors to rear garden, double radiator.

Double detached garage

4.67m x 4.11m (15' 4" x 13' 6") 2 up and over doors to front, single door to rear, power and lighting.

FIRST FLOOR

Bedroom 1

3.31m x 4.21m (10' 10" x 13' 10") into bay window to front, double radiator.

Bedroom 2

3.19m x 2.35m (10' 6" x 7' 9") views to rear, single radiator.

Bedroom 3

1.97m x 2.54m (6' 6" x 8' 4") views front, single radiator.

Bathroom

3.41m x 2.51m (11' 2" x 8' 3") L shaped, coloured suite comprising; bath, close coupled w.c, sink, half tiled walls, shower cubicle with mixer shower, glass door, fully tiled, single radiator.

Exterior

Front garden area.

Large rear garden.

