

FOR SALE

Beaconsfield Terrace Road,
West Kensington, W14

Flat
Olympia

£425,000 lh

1  1  1 

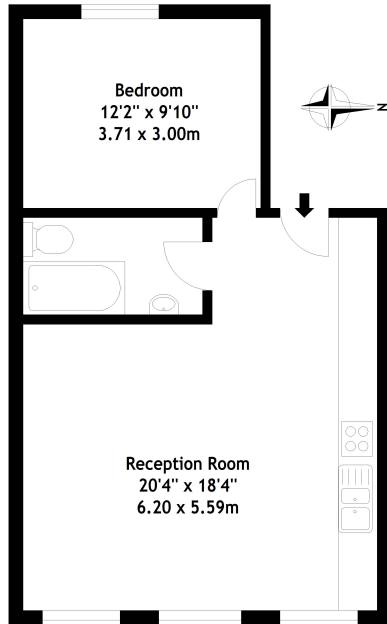


**horton
andgarton**

SALES / LETTINGS / PROPERTY MANAGEMENT

hortonandgarton.co.uk | Sales 020 8819 0510 | Lettings 020 8819 0511
172 King Street, Hammersmith, W6 0QU





Third Floor

**horton
and garton**

Flat 3,
3 Beaconsfield Terrace
London W14 0PP
Gross Internal Area 494 sq ft - 45.9 sq m

Drawn from supplied plans.
All measurements are approximate.
This floor plan is for illustrative purposes only
and is not to scale.
© Horton and Garton Estate Agents 2024



Victorian conversion top floor flat | One bedroom - One bathroom | 494 Sq' - 45.9 SqM | No chain | EPC rating D | Olympia



hortonandgarton.co.uk
Sales 020 8819 0510
Lettings 020 8819 0511

172 King Street, Hammersmith, W6 0QU