



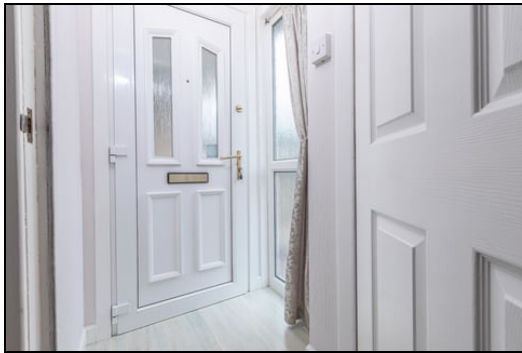
Offers Over £99,950
25 Park Street, Crosshill, Lochgelly, Fife, KY5 8AW

25 Park Street, Crosshill, Lochgelly, Fife, KY5 8AW

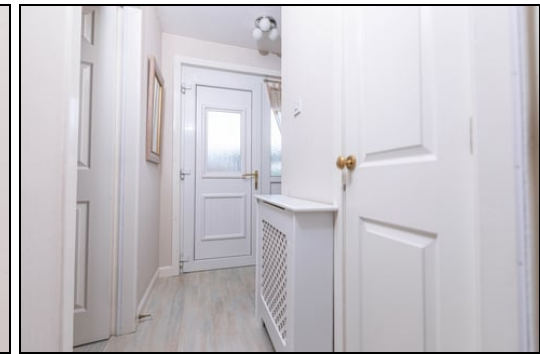
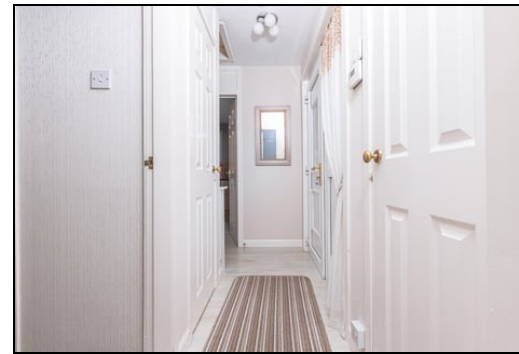
Delmor are delighted to present to the market this rarely available end terraced bungalow set in a popular location. Crosshill has a good range of amenities and is close to the A92 for the commuter. The accommodation briefly comprises of - Entrance vestibule. Hallway with storage. Bright lounge. Kitchen with floor and wall mounted units. Gas cooker. Fridge/freezer. Washing machine. Space for small table and chairs. Bathroom comprising of bath with overhead shower and screen. Wash hand basin and WC. Double bedroom. The front gardens are chipped. The rear gardens are enclosed and chipped. Garden shed. The property also benefits from gas central heating and double glazing. Early viewing is highly recommended.

Ground Floor

Entrance Vestibule



Hallway



Lounge



4.62m x 3.24m (15' 2" x 10' 8")



Kitchen



3.16m x 2.85m (10' 4" x 9' 4")

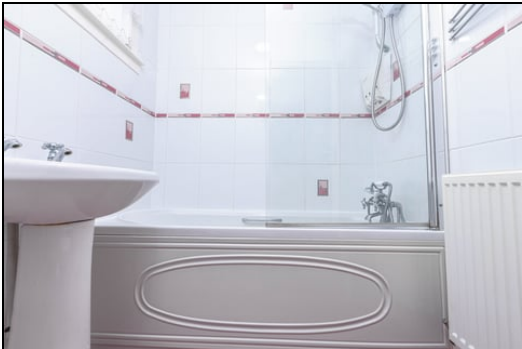
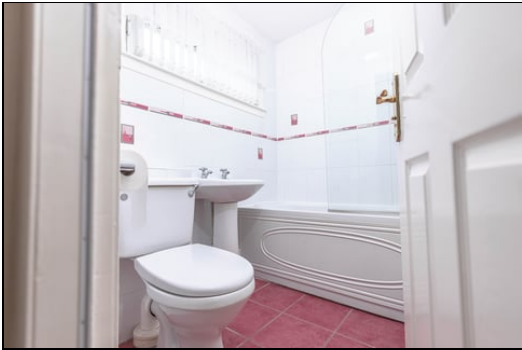
Bedroom



3.49m x 3.45m (11' 5" x 11' 4")



Bathroom



1.97m x 1.6m (6' 6" x 5' 3")

Gardens

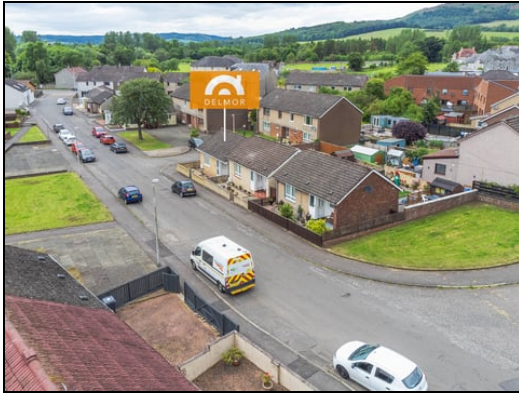


Extras

All floor coverings. Gas cooker, washing machine and fridge/freezer. Garden shed.

SONIC TAPE

All measurements have been taken using a sonic tape measure and therefore, may be subject to a small margin of error.



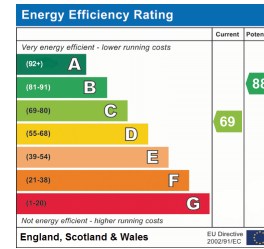
they are in fully working order.

MORTGAGE & FINANCIAL ADVICE

Qualified Mortgage and Financial Consultants can provide you with up to the minute information on many of the rates available. To arrange an appointment telephone this office. **YOUR HOME IS AT RISK IF YOU DO NOT KEEP UP REPAYMENTS ON A MORTGAGE OR OTHER LOANS SECURED ON IT.** Full written quotation available on request. A suitable life policy may be required. Loans are subject to status. Minimum age 18.

FREE VALUATION

How much is your property worth?. We can provide you with the answer. We offer a free valuation service without cost or obligation. Please call this office for an appointment.

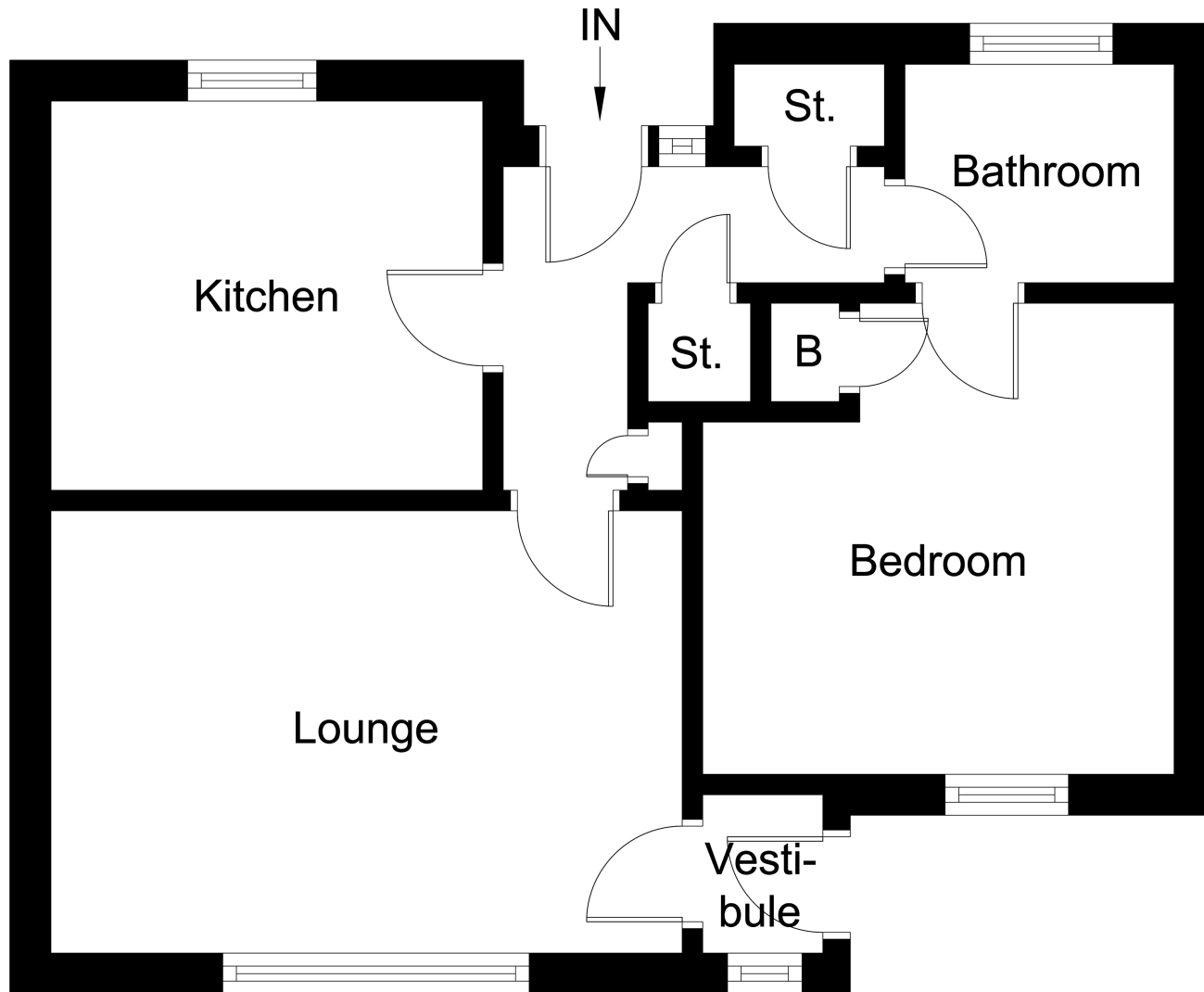


MEASUREMENTS

All measurements are approximate.

APPLIANCES/SERVICES

The mention of any appliances and/or services within these Sales Particulars does not imply



Ground Floor