



58c Gibson Street
Kilmarnock, KA1 2PN
P.O.A.

GREIG
Residential



Gibson Street

Kilmarnock, KA1 2PN

Greig Residential are delighted to present to the market this superb one bedroom upper flat located in the ever popular Bonnyton area of Kilmarnock offering ease of access to all local amenities and transport links. Boasting spacious accommodation complete with neutral decor, modern kitchen and complimented by well maintained communal gardens this is the ideal first time buy, downsize buy or investment and is sure to impress all who view.





Hall

1.11m x 2.79m (3' 8" x 9' 2") Accessed via well kept communal close, the hallway features neutral decor, laminate flooring, overhead storage and gives access to all apartments.

Lounge

3.91m x 4.70m (12' 10" x 15' 5") Generous main apartment boasting neutral decor, ceiling coving, feature fireplace, laminate flooring, door access to the kitchen and a double glazed window to the rear.

Kitchen

3.28m x 1.99m (10' 9" x 6' 6") Fully fitted kitchen offering an array of wall and base units, complementary work surfaces, integrated gas hob and electric oven, space for fridge freezer and washing machine, stainless steel sink and drainer, with neutral decor, laminate flooring and double glazed window to the rear.

Bedroom One

4.42m x 3.97m (14' 6" x 13' 0") Double bedroom featuring neutral decor, fitted carpet, ceiling coving with central rose and double glazed window to the front.

Shower Room

1.95m x 2.41m (6' 5" x 7' 11") Three piece shower room comprising WC, wash hand basin with vanity storage, fully tiled mains shower cubicle, neutral decor and laminate flooring.

External

This property further benefits from a well kept communal garden with drying green, patio area and gives open outlooks across Kilmarnock

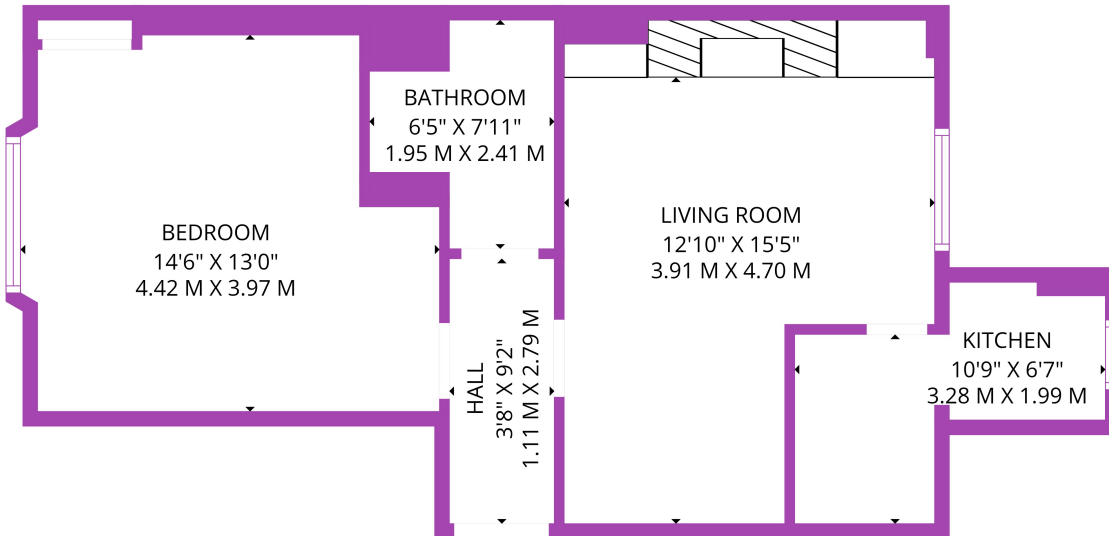
Council Tax Band

Band A

Disclaimer

THESE PARTICULARS ARE ISSUED IN GOOD FAITH BUT DO NOT CONSTITUTE REPRESENTATIONS OF FACT OR FORM PART OF ANY OFFER OR CONTRACT. THE MATTERS REFERRED TO IN THESE PARTICULARS SHOULD BE INDEPENDENTLY VERIFIED BY PROSPECTIVE BUYERS. NEITHER GREIG RESIDENTIAL NOR ANY OF ITS EMPLOYEES OR AGENTS HAS ANY AUTHORITY TO MAKE OR GIVE ANY REPRESENTATION OR WARRANTY WHATEVER IN RELATION TO THIS PROPERTY. ALL ROOM DIMENSIONS ARE AT WIDEST POINTS APPROX.





TOTAL: 517 sq. ft, 48 m²
Ground floor: 517 sq. ft, 48 m²
EXCLUDED AREAS: WALLS: 55 sq. ft, 5 m²

SIZES AND DIMENSIONS ARE APPROXIMATE. ACTUAL MAY VARY. © FOUR WALLS MEDIA

