



**11 Welsummer Grove, Shenley Brook End,
Milton Keynes, Buckinghamshire, MK5
7GE**

£319,950 Freehold

- Three bedroom
- Single garage and 2 parking spaces
- Highly sought after location of Shenley Brook End
- Fantastic school catchment
- Large rear garden
- Overlooking Green Area
- Two bathrooms
- EPC Rating





Ground Floor

Living Room

5.02m x 3.2m (16' 6" x 10' 6")

Kitchen

5.02m x 2.91m (16' 6" x 9' 7")

First Floor

Bedroom One

3.05m x 3.19m (10' 0" x 10' 6")

Bedroom Two

2.91m x 3.21m (9' 7" x 10' 6")

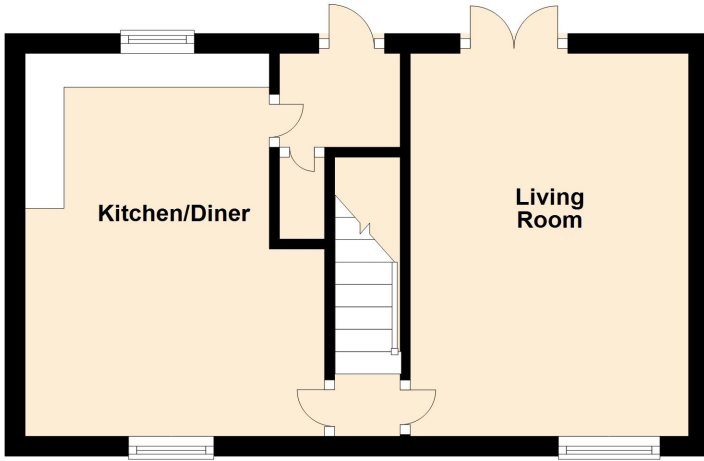
Bedroom Three

2.02m x 2.23m (6' 8" x 7' 4")

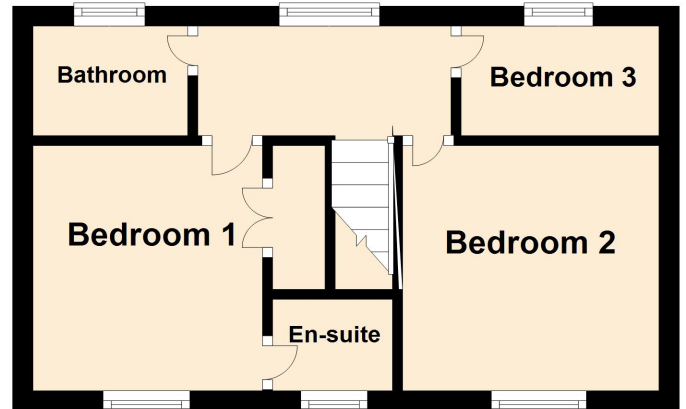
Disclaimer

Whilst we have endeavoured to prepare our sales particulars accurately none of the services, appliances or equipment have been tested. A buyer should satisfy themselves on such matters prior to purchase. Any measurements or distances mentioned in these particulars are for guide reference only. If such particulars are fundamental to a purchase, buyers should rely on their own enquiries. All enquiries should be directed to Elevation Estate Agents in the first instance.

Ground Floor



First Floor



Floor plans are for layout purposes only. Measurements are approximate and subject to inaccuracies
Plan produced using PlanUp.