



daniels
danielsestateagents.co.uk



**Athelstan Gardens, Brondesbury, London NW6 7SN
£350,000 - Leasehold**



PROPERTY DESCRIPTION

Being Sold via Secure Sale online bidding. Terms & Conditions apply. Guide Price £350,000.

A split level ground and first floor flat situated in Brondesbury within close proximity to Kilburn High Road with a variety of shops and transport links.

The property benefits from a LARGE LIVING ROOM, KITCHEN/DINER, W/C on the ground floor with TWO DOUBLE BEDROOMS, further SINGLE BEDROOM and FITTED BATHROOM on the first floor. The lounge has direct access onto communal gardens.

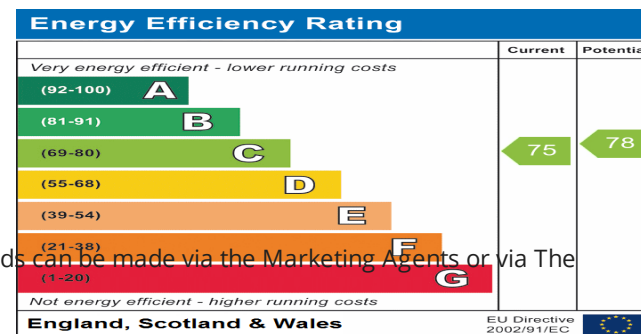
Brondesbury overground station and Kilburn Jubilee Line is a short distance away.

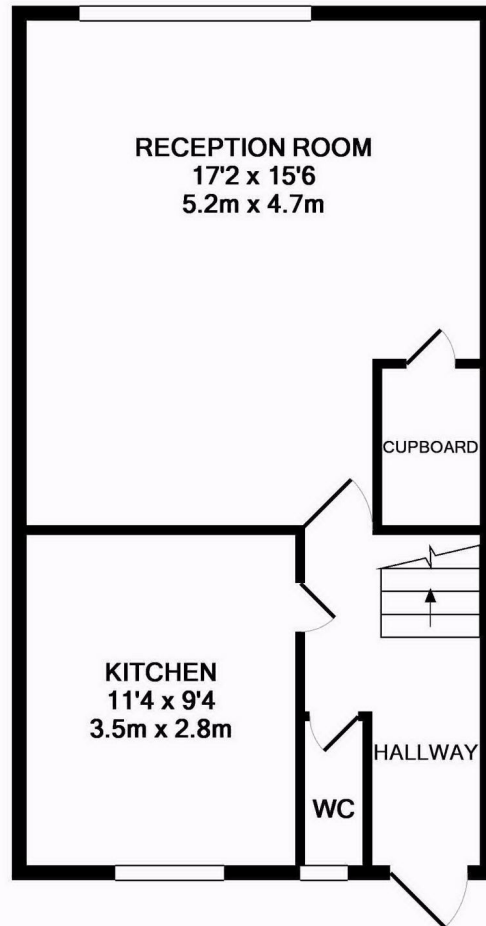
Auctioneers Additional Comments

Pattinson Auction are working in Partnership with the marketing agent on this online auction sale and are referred to below as 'The Auctioneer'.

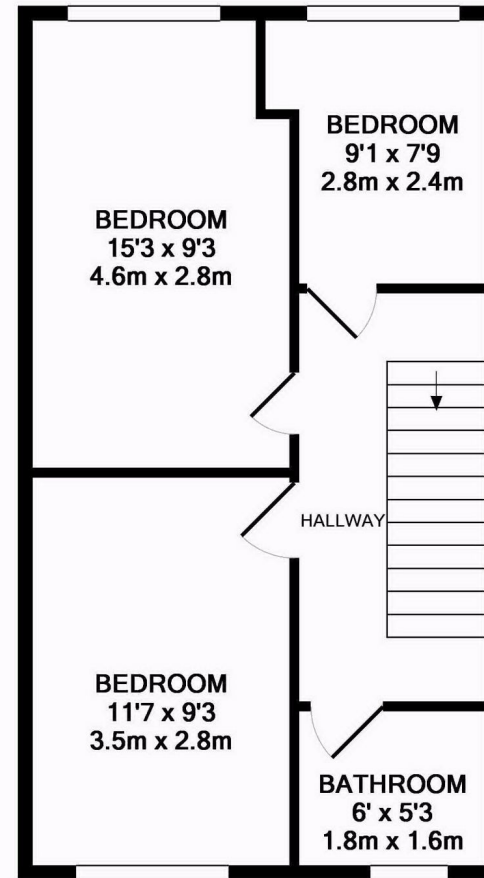
This auction lot is being sold either under conditional (Modern) or unconditional (Traditional) auction terms and overseen by the auctioneer in partnership with the marketing agent.

The property is available to be viewed strictly by appointment only via the Marketing Agent or The Auctioneer. Bids can be made via the Marketing Agents or via The Auctioneers website.





GROUND FLOOR
APPROX. FLOOR
AREA 442 SQ.FT.
(41.1 SQ.M.)



1ST FLOOR
APPROX. FLOOR
AREA 442 SQ.FT.
(41.1 SQ.M.)

ATHELSTAN GARDENS
TOTAL APPROX. FLOOR AREA 884 SQ.FT. (82.1 SQ.M.)

Whilst every attempt has been made to ensure the accuracy of the floor plan contained here, measurements of doors, windows, rooms and any other items are approximate and no responsibility is taken for any error, omission, or mis-statement. This plan is for illustrative purposes only and should be used as such by any prospective purchaser. The services, systems and appliances shown have not been tested and no guarantee as to their operability or efficiency can be given