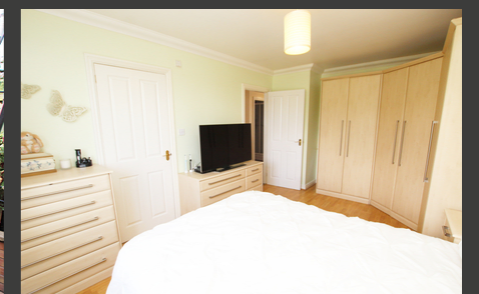


Bolton Road, Ashton-in- Makerfield, £275,000

Offers Over



NEW Built in 2005 and boasting a very generous square footage and open aspects to the rear is this large detached house. Offering 1508 SQ.FT. this is one of the best value (pound per square foot) detached houses in the Ashton area

 x 4  x 3

See more of this house at ashtons.net

