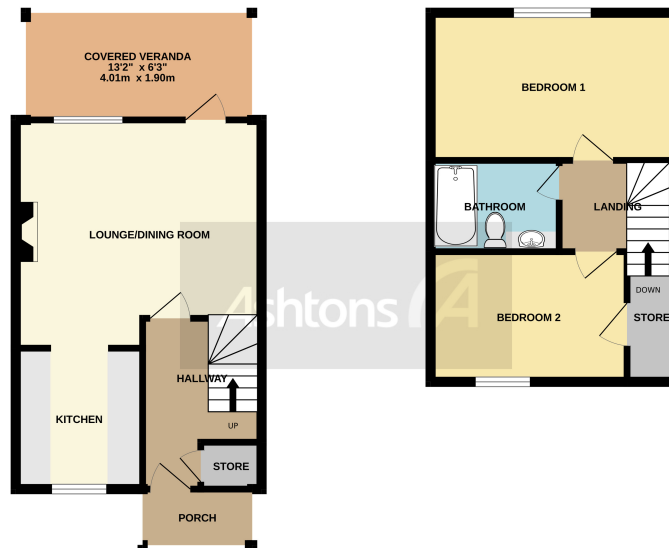




*7 Woodford Close, Thelwall, Warrington, Cheshire.
WA4 2NA.
£247,500*

NO ONWARDS CHAIN | SEMI-DETACHED HOME | TWO DOUBLE BEDROOMS | GREAT
LOCATION | PRIVATE REAR FACING | OFF ROAD PARKING |





Whilst every attempt has been made to ensure the accuracy of the floorplans contained here, measurements of areas, volumes, rooms and any other items are approximate and no responsibility is taken for any error, omission or mis-statement. This plan is for illustrative purposes only and should be used as such by any prospective purchaser. The services, systems and appliances shown have not been tested and no guarantee as to their condition or whether they will be given. Made with Metropix ©2021

Introducing a tranquil haven nestled within a peaceful development, this remarkable two-bedroom semi-detached property offers an idyllic living experience. Positioned gracefully next to calming waters, the residence presents a harmonious blend of nature and comfort.

Internally there is a covered porch, an entrance hall with stairs to the first floor, and a handy storage cupboard. To the rear is a lounge/diner with access to the rear garden, and a kitchen with a range of fitted units and appliances is included. On the first floor the property benefits from two double bedrooms again with fitted bedroom furniture and a three-piece family bathroom. Externally there are mature gardens to the front and rear, as off-road parking. To the rear garden is a covered veranda



Contact your local office to arrange a viewing:

Padgate: 01925 479334
Great Sankey: 01925 454300
Winwick: 01925 232146
Stockton Heath: 01925 453400
St.Helens: 01744 754120
Wigan: 01942 498862
Culcheth: 01925 764744
Ashton-In-Makerfield: 01942 364446
Newton-Le-Willows: 01925 907770
Commercial Office: 01925 907709
Lettings Head Office: 01925 873533
Financial Services: 01925 221234

Viewing Arrangements

Viewing is strictly by appointment only through Ashtons Estate Agency.

Disclaimer Property Details

These particulars, whilst being believed to be accurate are set out as a general outline only for guidance and do not constitute any part of an offer or contract. Intending purchasers should not rely on them as statements of representation of fact, but must satisfy themselves by inspection or otherwise as to their accuracy. We have not carried out a detailed survey nor tested the services, appliances and specific furnishings. The measurements given are approximate.

No person in this firm's employment has the authority to make or give any representation or warranty in respect of the property.

All details, photographs and floorplans are the copyright of Ashtons Estate Agency.



How much you can borrow?
Speak to a mortgage expert in your local office.

Ashtons Financial Services

Ashtons.net rightmove

PrimeLocation.com Zoopla.co.uk

Ashtons