

PAUL ALEXANDER  
MORTGAGE CONSULTANTS

For all insurance and mortgage needs,  
please call Paul Alexander Mortgage Consultants  
on 020 8997 3915

LONDON'S LOCAL AGENT

[enquiries@orchardsoflondon.com](mailto:enquiries@orchardsoflondon.com)

020 3962 6000 | [orchardsoflondon.com](http://orchardsoflondon.com)

Westworld West Gate London W5 1DT

## PLEYDELL AVENUE

£600 p/w

- Two bedroom property
- Two bathrooms
- Recently refurbished
- Split level
- Wood flooring throughout
- Beautiful features
- Bright and spacious
- Close to amenities
- Excellent transport links
- Available Mid July

LONDON'S LOCAL AGENT

[enquiries@orchardsoflondon.com](mailto:enquiries@orchardsoflondon.com)

020 3962 6000 | [orchardsoflondon.com](http://orchardsoflondon.com)

Westworld West Gate London W5 1DT





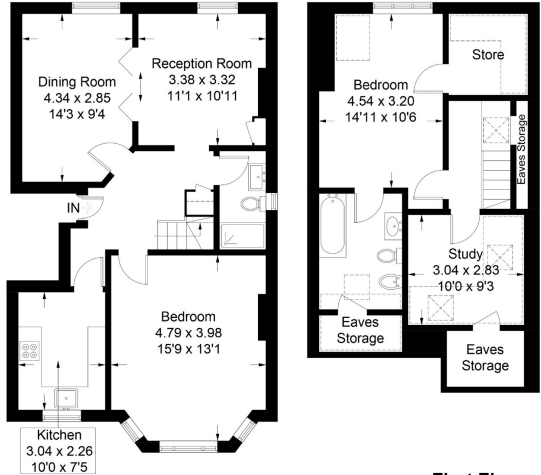
With great delight Orchards of London is bringing this bright and airy two bedroom property to the lettings market. The property spans over 1195 sq ft and is split across two floors. The first floor comprises of a large double bedroom with bay window, kitchen, bathroom and two adjoining reception rooms whilst the second floor houses the second double bedroom, storage space, a family bathroom and study which could be used as a bedroom. Pleydell Avenue is superbly located due to its close proximity to green open spaces, Chiswick High Road and commuters are a short walk from Stamford Brook Underground (District line). Motorists are near the M4, making the journey in and out of London easy.

**Pleydell Avenue, W6**

Approximate Gross Internal Area = 111 sq m / 1195 sq ft  
(Including Eaves Storage)



□ = Reduced headroom below 1.5m / 5'0"



Measured in accordance with RICS Code of Measuring Practice. To be used for identification and guidance purposes only. Whilst every care is taken in the preparation of this plan, please check all dimensions, shapes and compass bearings before making any decisions reliant upon them. www.london08.com © 2018 hello@london08.com