



9 Whittle Court,  
Knowlhill, Milton Keynes, MK5 8FT

Tel: 01908 231 551  
mail@elevationstateagents.com



**23 Cleeve Crescent, Bletchley, Milton  
Keynes, Buckinghamshire, MK3 6LL**

**£280,000 Freehold**

- Three Bedroom Mid Terrace
- Beautifully Presented Garden
- Spacious Living Dining
- Refurbished bathroom
- Sought After Area
- Close proximity to all amenities
- EPC Rating



See our full selection of properties online at [www.elevationstateagents.com](http://www.elevationstateagents.com)



This delightful three-bedroom terraced home located in the desirable area of Bletchley, Milton Keynes. This charming property boasts a refurbished bathroom and beautiful gardens, offering a tranquil retreat in the heart of the city.

While the property has some dated features, it has been well-maintained and offers a wealth of character and charm. As you enter the property, you are welcomed into a spacious hall that leads to the kitchen, it is functional and offers ample storage space, providing a great space for preparing meals. The generously sized living dining room provides the perfect space for relaxing and entertaining. The French doors add a touch of elegance and provide easy access to the outdoor space.

The room is flooded with natural light and offers ample space for a variety of furniture arrangements. The French doors add a touch of elegance and provide easy access to the outdoor space.

The three bedrooms are located on the first floor and provide comfortable living quarters for a family or those who enjoy having guests over. The refurbished bathroom features modern fixtures and fittings, offering a contemporary touch to this otherwise characterful property.

One of the highlights of this property is the beautiful front and rear gardens, which provide a perfect outdoor space for relaxation and entertaining. The rear garden is particularly charming, with a patio area and well-manicured lawn surrounded by mature trees and shrubs.

Located in Bletchley, Milton Keynes, this property is well-positioned for access to local amenities and transport links. Bletchley train station is just a short walk away, providing easy access to London and other major cities.

Overall, this three-bedroom terraced home with a refurbished bathroom and beautiful gardens is a fantastic opportunity for anyone looking for a charming property in a convenient location. Don't miss your chance to view this property, book your appointment today!

### Hall

4.8m x 2.0m (15' 9" x 6' 7")

### Kitchen

2.8m x 2.7m (9' 2" x 8' 10")

### Living Room

3.1m x 2.3m (10' 2" x 7' 7")

### Dining Room

2.6m x 2.7m (8' 6" x 8' 10")

### Master Bedroom

3.7m x 3.2m (12' 2" x 10' 6")

### Bedroom two

3.1m x 2.6m (10' 2" x 8' 6")

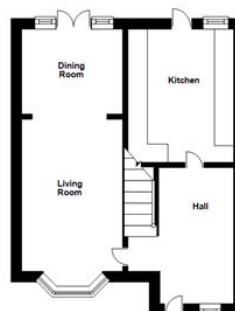
### Bedroom Three

3.7m x 1.8m (12' 2" x 5' 11")

### Disclaimer

Whilst we have endeavoured to prepare our sales particulars accurately none of the services, appliances or equipment have been tested. A buyer should satisfy themselves on such matters prior to purchase. Any measurements or distances mentioned in these particulars are for guide reference only. If such particulars are fundamental to a purchase, buyers should rely on their own enquiries. All enquiries should be directed to Elevation Estate Agents in the first instance.

Ground Floor



First Floor



Floor plans are for layout purposes only. Measurements are approximate and subject to inaccuracies. Plan produced using PlanUp.



