



53 The Gorseway, Bexhill-on-Sea, East Sussex,  
TN39 4NA

£500,000

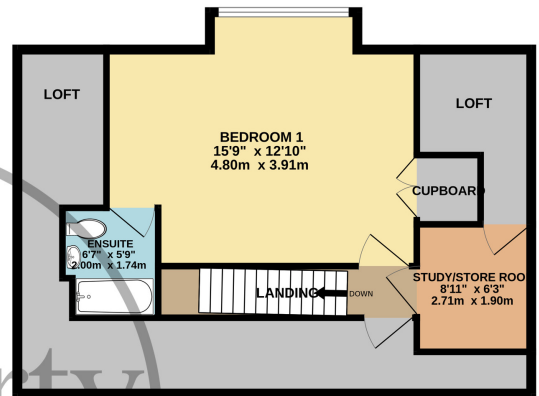
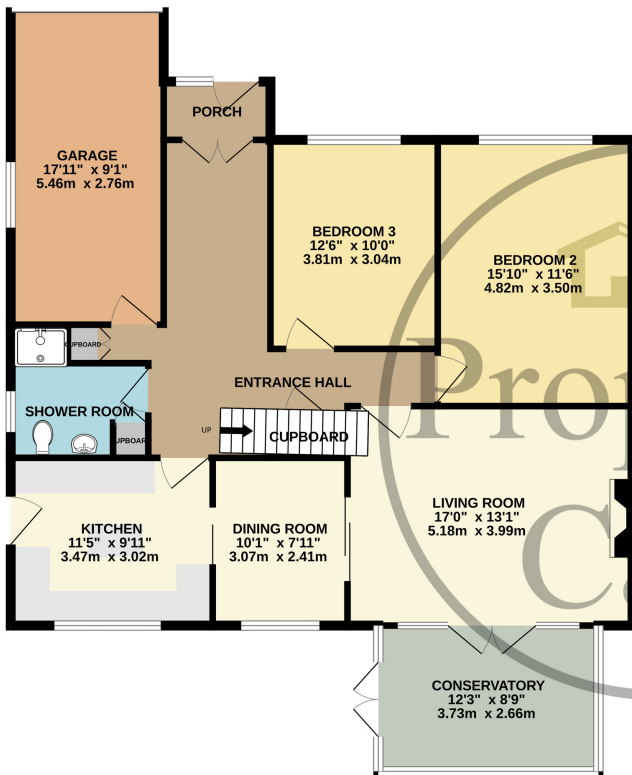


- Detached Three Bedroom Chalet Bungalow For Sale
- Two Separate Reception Rooms
- Well Proportioned Fitted Kitchen
- West Facing Conservatory & Garden
- Two Ground Floor Double Bedrooms
- Ground Floor Bathroom.
- Master Bedroom & Ensuite on 1st Floor
- Single Garage With Internal Access
- Off-Road Parking For Several Cars
- Extensive & Accessible Loft Space
- Sought After Little Common Location
- Planning Permission Granted For a 4th Bedroom
- Sold With No Onward Chain.
- Viewing Highly Recommended



**GROUND FLOOR**  
1275 sq.ft. (118.4 sq.m.) approx.

**1ST FLOOR**  
649 sq.ft. (60.3 sq.m.) approx.



**TOTAL FLOOR AREA : 1924 sq.ft. (178.7 sq.m.) approx.**

Whilst every attempt has been made to ensure the accuracy of the floorplan contained here, measurements of doors, windows, rooms and any other items are approximate and no responsibility is taken for any error, omission or mis-statement. This plan is for illustrative purposes only and should be used as such by any prospective purchaser. The services, systems and appliances shown have not been tested and no guarantee as to their operability or efficiency can be given.

Made with Metropix ©2024