



Eastfields Avenue, London, SW18 1GN

Cow & Co
LONDON



GUIDE PRICE OF £550,000-650,000. A stunning two bedroom, two bathroom modern apartment with wood floors and doors out to the private balcony with views of the river in the sought after Riverside development in Wandsworth.

Benefitting from excellent on site security and concierge service, in addition to a gymnasium and swimming pool, plus secure underground parking in which the apartment has a designated space and a secure private storage cage.

Located on the banks of the River Thames, this ever popular development is moments away from the green open spaces of Wandsworth Park, local amenities of Wandsworth Town Centre and Putney high Street.

Wandsworth Town station (0.4 miles) provides regular over ground services to London Waterloo and Clapham Junction, whilst East Putney station (0.7 miles) enables easy access to the City via the District Line.

The river bus also services the development at Riverside Quarter pier.

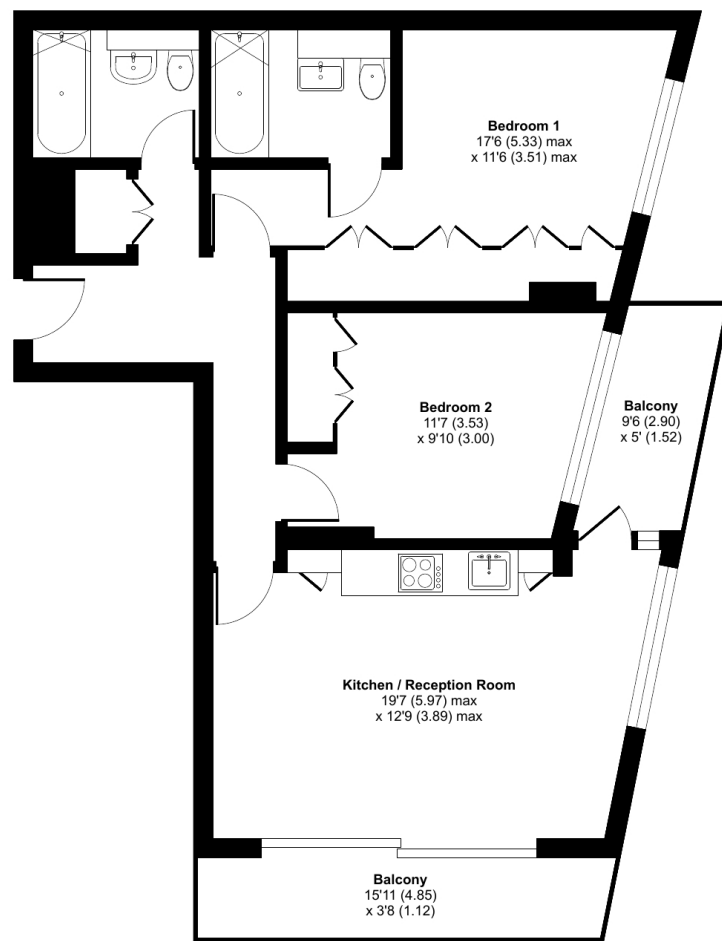


- Two double bedroom apartment situated in popular location
- Private underground parking space
- Premium facilities including gym and swimming pool
- Secure private storage cage
- Two private balconies
- Two bathrooms with one being an ensuite of the master bedroom
- Conveniently located for Wandsworth Town, Putney and the Thames
- 24 hour Concierge
- EWS1 certificate granted

Eastfields Avenue, London, SW18

Approximate Area = 740 sq ft / 68.7 sq m

For identification only - Not to scale



SIXTH FLOOR



Floor plan produced in accordance with RICS Property Measurement Standards incorporating International Property Measurement Standards (IPMS2 Residential). © nchecon 2023. Produced for Cow & Co Properties Ltd. REF: 952174

Tel: 0208 065 0010
Email: thehub@cowandco-london.com
Web: cowandco-london.com

Agents note: All measurements are approximate and whilst every attempt has been made to ensure accuracy they are for general guidance only and must not be relied on. The fixture and fittings referred to have not been tested and therefore no guarantee can be given that they are in working order. Internal photographs are reproduced for general information and it must not be inferred that any item shown is included with the property.

Cow & Co

LONDON