



27 Cardigan Crescent, Boverton, Llantwit Major, CF61 2GP

£297,950



1 Pound Field, Llantwit Major, Vale Of Glamorgan, CF61 1DL

Tel No 01446 794433. E-Mail info@brightermoves.co.uk

Web www.brightermoves.co.uk



THREE/FOUR BEDROOM DETACHED PROPERTY offering a generous 56 SQM's of ground floor living space. A recently renovated garage gives this property a ground floor bedroom with en-suite or second reception room, offering the potential of ground floor living. The property is modern, light and well presented, it has a well proportioned plot size and space to the side for storage sheds. The ground floor is porch, bedroom/second reception, en-suite, kitchen and conservatory, the first floor has three bedrooms and family bathroom. Council tax-D. EPC-D, Living space is Approximately 86 SQM.

GROUND FLOOR

Entrance Hall

uPVC double glazed front door to inner porch. Doorway to lounge and to fourth bedroom/second reception room. Small window to the side.

Lounge

5.85m x 3.97m (19' 2" x 13' 0")
Open plan living area. uPVC double glazed window to the front, patio doors into the conservatory. Doors leading into garden and kitchen, carpeted stairs to the first floor level. Fitted carpet, radiator, ceiling light and power.

Conservatory

3.56m x 2.56m (11' 8" x 8' 5")
Conservatory with French doors opening to the side and opening windows. Tiled flooring, ceiling light and power points.

Kitchen

2.86m x 2.51m (9' 5" x 8' 3")
Fitted with a range of base and wall units with contrasting work surfaces over and tiled surrounds. Electric cooker with gas hob and extractor fan over. Stainless steel bowl and drainer with mixer tap over. Space and plumbing for white goods. uPVC window to the rear. Wood effect flooring, ceiling light and power.

Bedroom Four/Second Reception

3.92m x 2.45m (12' 10" x 8' 0")
uPVC double glazed window to the front. Fitted carpet, radiator, power points and doorway to the En Suite.

En-Suite

2.50m x 0.9m (8' 2" x 2' 11")
Walk in shower cubicle, low level WC. Wash hand basin in vanity unit. Tiled flooring, tiled to splash back, mains extractor fan.

FIRST FLOOR

Landing

Carpeted stairs and landing area. Wired for ceiling light and powerpoint. Doors to the bedrooms and bathroom. Loft access with ladder to loft space with boarding and electric supply.

Bedroom One

3.97m x 3.63m (13' 0" x 11' 11")
uPVC window overlooking the front. Built-in double wardrobes. Carpeted flooring, radiator, ceiling light and power.

Bedroom Two

8' 2" x 9' 10" (2.50m x 3.00m)
Window overlooking the rear. Location of the cupboard housing Combi Boiler and separate storage cupboard. Carpeted flooring, radiator,ceiling light and power.

Bedroom Three

2.77m x 2.52m (9' 1" x 8' 3")
uPVC window overlooking the front. Carpeted flooring, radiator, ceiling light and power.

Bathroom

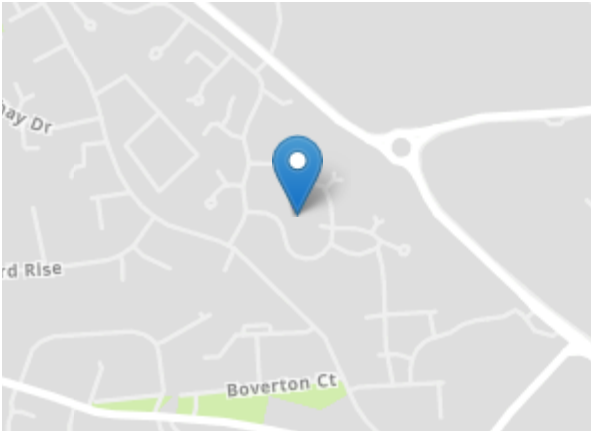
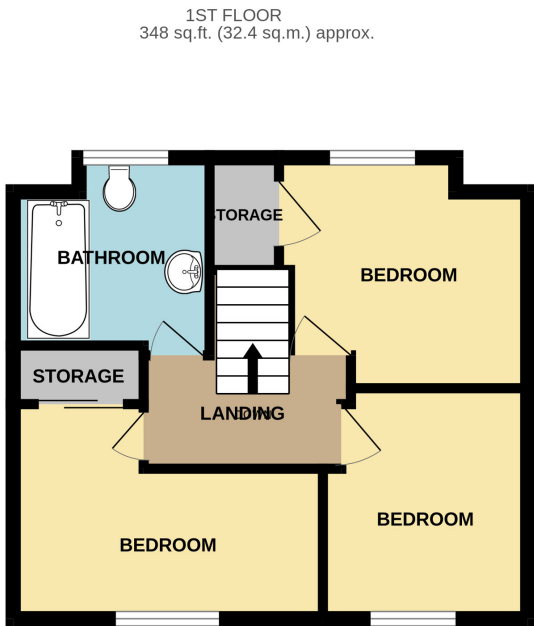
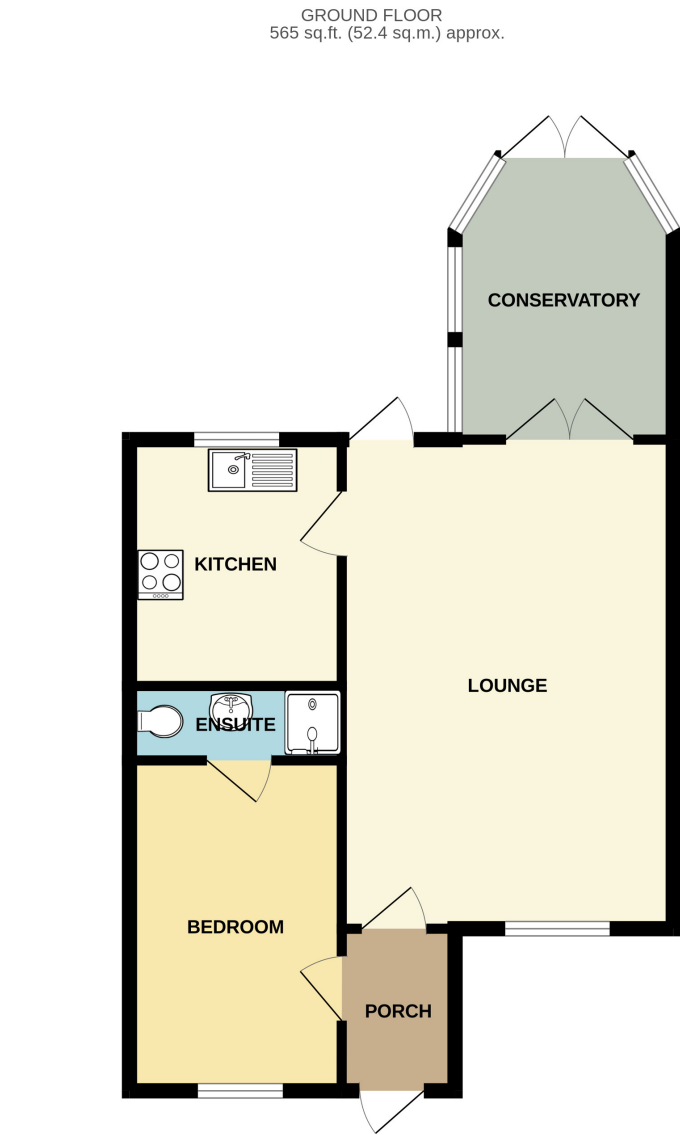
2.50m x 2.22m (8' 2" x 7' 3")
Fitted with a three piece suite comprising; low level WC, pedestal wash hand basin, bath with tiled side panel and shower over. uPVC obscure window to the rear of the property. Radiator and ceiling light.

EXTERNAL

Garden

To the front is a brick paved driveway with lawned area to the side. Gated rear access.

To the rear is a fully enclosed garden planted with mature shrubs and trees with a mixture of patio area providing space for garden furniture and lawn. Shed to remain and space at the side of the property (storage area).



MIS REPRESENTATION ACT 1967: These Particulars Are For Guidance Only And Their Accuracy Is Not Guaranteed And Neither Do They Form Part Of Any Other Or Contract.
PROPERTY MIS DESCRIPTION ACT 1991: All Reasonable Steps Have Been Taken To Ensure That These Particulars Do Not Contain Any Error, Mistake Or Misdescription, As Described By The Property Misdescription Act.
PROCEEDS OF CRIME ACT 2002: Brighter Moves Are Obligated To Report Any Knowledge Or Suspicion Of Money Laundering To The Ncis (National Crime Intelligence Service) And Should Such A Report Prove Necessary Are Precluded From Conducting Any Further Professional Work Without The Consent From The Ncis.

