



23 Webb Close, Letchworth Garden City, Hertfordshire, SG6 2TY

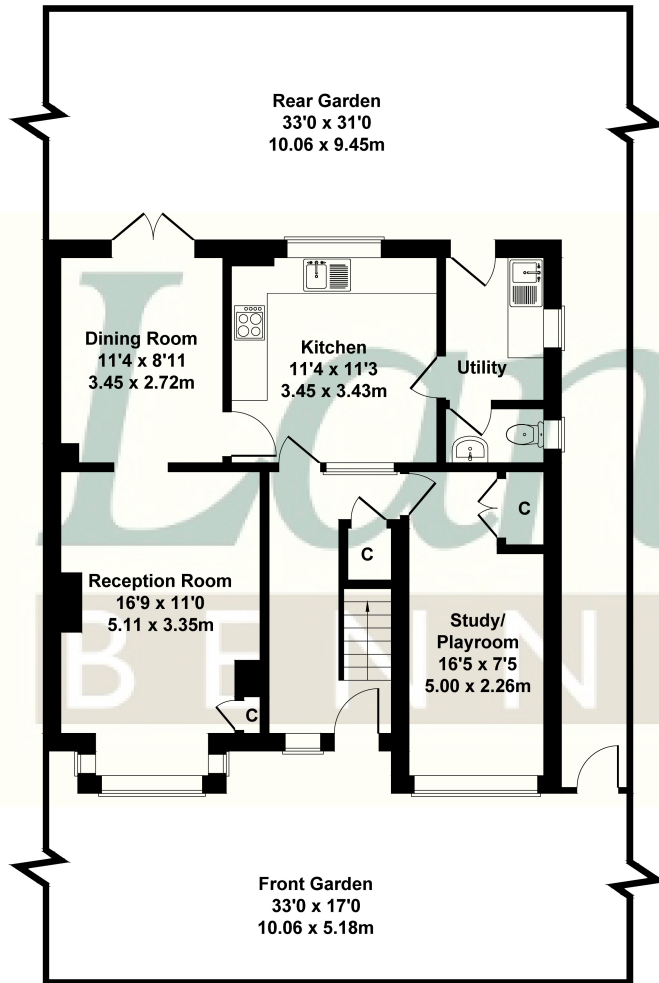
£550,000

CHAIN FREE Superbly located 4 bed family home. Offering THREE separate receptions - lounge with feature fireplace, dining room with French doors to rear patio for outdoor dining or drinks, & FAMILY ROOM/HOME OFFICE. Plus fitted kitchen & breakfast room. The main Bed has an en suite, three further doubles and the family bathroom has been redesigned to a decent spec. There is the bonus of a cloakroom, utility room with door to rear, landscaped gardens & off road parking to entice. Viewing is highly recommended.

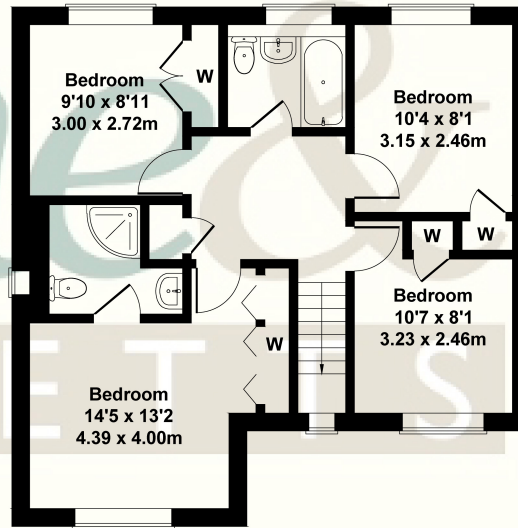


## 23 Webb Close

Approximate Gross Internal Area  
1356 sq ft - 126 sq m



GROUND FLOOR



FIRST FLOOR

Not to Scale. Produced by The Plan Portal 2023  
For Illustrative Purposes Only.

- SIZABLE FOUR BED FAMILY HOME
- MAIN BED WITH FITTED WARDROBES + EN SUITE SHOWER ROOM
- LOUNGE WITH BAY WINDOW & FEATURE FIREPLACE
- DINING ROOM WITH FRENCH DOORS TO GARDEN
- FITTED KITCHEN
- SEPARATE UTILITY ROOM
- FAMILY ROOM /HOME OFFICE SPACE
- OFF ROAD PARKING WITH ELECTRIC CAR CHARGE POINT
- PRIVATE REAR GARDEN
- UNDER 1M FROM TOWN | TUCKED AWAY IN THE CORNER OF A CUL-DE-SAC |

