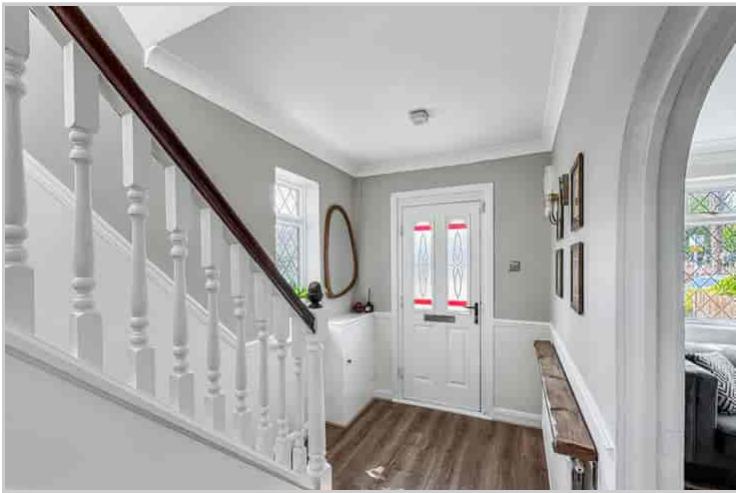


4 Lodge Close, Orpington, Kent, BR6 0QQ

## Property Images







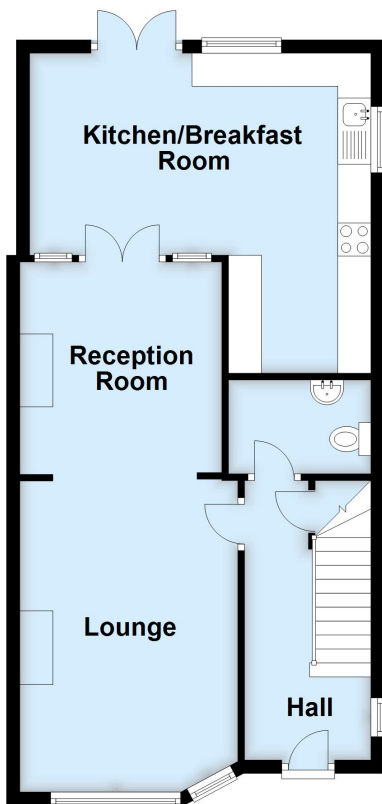






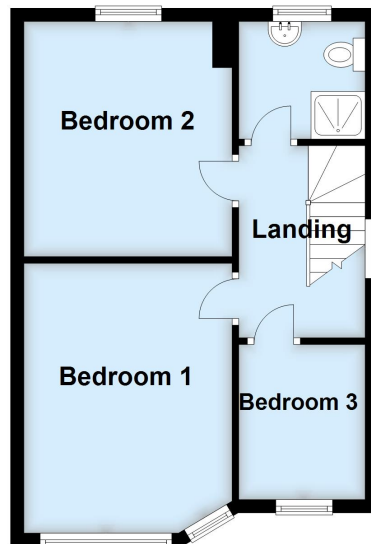
## Ground Floor

Approx. 57.6 sq. metres (619.7 sq. feet)



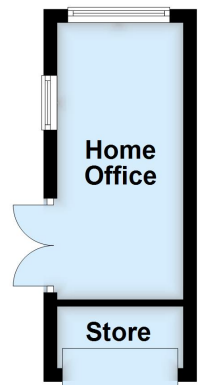
## First Floor

Approx. 38.6 sq. metres (416.0 sq. feet)



## Outbuilding

Approx. 10.0 sq. metres (107.4 sq. feet)



Total area: approx. 106.2 sq. metres (1143.1 sq. feet)

This plan is for general layout guidance and may not be to scale.  
Plan produced using PlanUp.