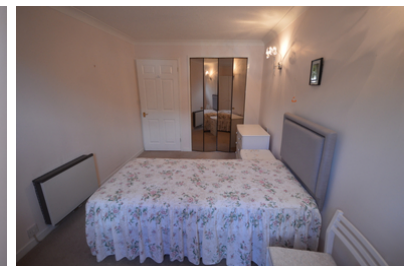
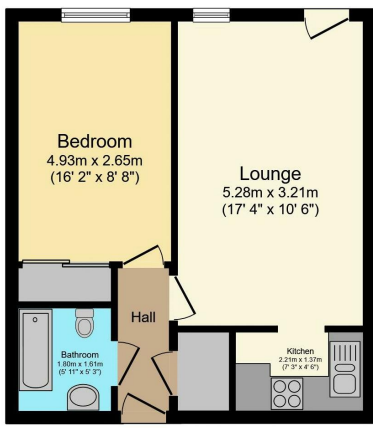


74 Moulsham Street,
Chelmsford, Essex,
CM2 0JA
01245 266980
chelmsford@mccartneyestateagents.co.uk

Mc Cartney
Sales & Lettings



Queen Street, Chelmsford
£95,000 Leasehold



Total floor area 40.2 sq.m. (433 sq.ft.) approx

This floor plan is for illustrative purposes only. It is not drawn to scale. Any measurements, floor areas (including any total floor area), openings and orientation are approximate. No details are guaranteed, they cannot be relied upon for any purpose and they do not form part of any agreement. No liability is taken for any error, omission or misstatement. A party must rely upon its own inspection(s).
Powered by www.focalagent.com