

3 Eversley Road

Hythe
CT21 5SE

£290,000 FREEHOLD

FOR SALE WITH BURNAP + ABEL... Nestled in a desirable residential setting, Eversley Road presents a beautifully appointed two-bedroom semi-detached home that perfectly blends character, comfort and versatile modern living. Thoughtfully arranged throughout, this charming property offers bright, inviting spaces and an exceptional south-facing garden designed for both relaxation and lifestyle flexibility. Upon entering, you are welcomed into a stylish lounge, where a feature log burner creates a warm and sophisticated focal point—perfect for cosy evenings and entertaining alike. To the rear, the property opens into a light-filled conservatory, offering a tranquil space to unwind while enjoying views over the garden. This versatile area effortlessly connects indoor and outdoor living, making it ideal for year-round enjoyment. The well-appointed kitchen provides practical functionality with ample storage and workspace, thoughtfully positioned to serve the main living areas with ease. A modern shower room completes the ground floor accommodation, finished with clean lines and contemporary fittings. Upstairs, the home offers two generously proportioned double bedrooms, each providing comfortable, airy accommodation with plenty of natural light—perfect for restful living or flexible use as guest space, home office, or dressing room. Outside, the property truly shines. The south-facing rear garden enjoys abundant sunlight throughout the day, creating a private and inviting outdoor retreat ideal for dining, entertaining or simply relaxing. A standout feature is the detached external office/salon, offering exceptional versatility. Whether used as a professional workspace, creative studio, beauty salon, or private home office, this dedicated space provides the perfect separation between work and home life.



Porch

Entrance Hall

Lounge

14' 8" x 10' 9" (4.47m x 3.28m)

Kitchen

11' 11" x 9' 11" (3.63m x 3.02m)

Shower Room

Separate W.C

Conservatory

12' 10" x 11' 2" (3.91m x 3.40m)

First Floor Landing

Bedroom One

14' 9" x 10' 10" (4.50m x 3.30m)

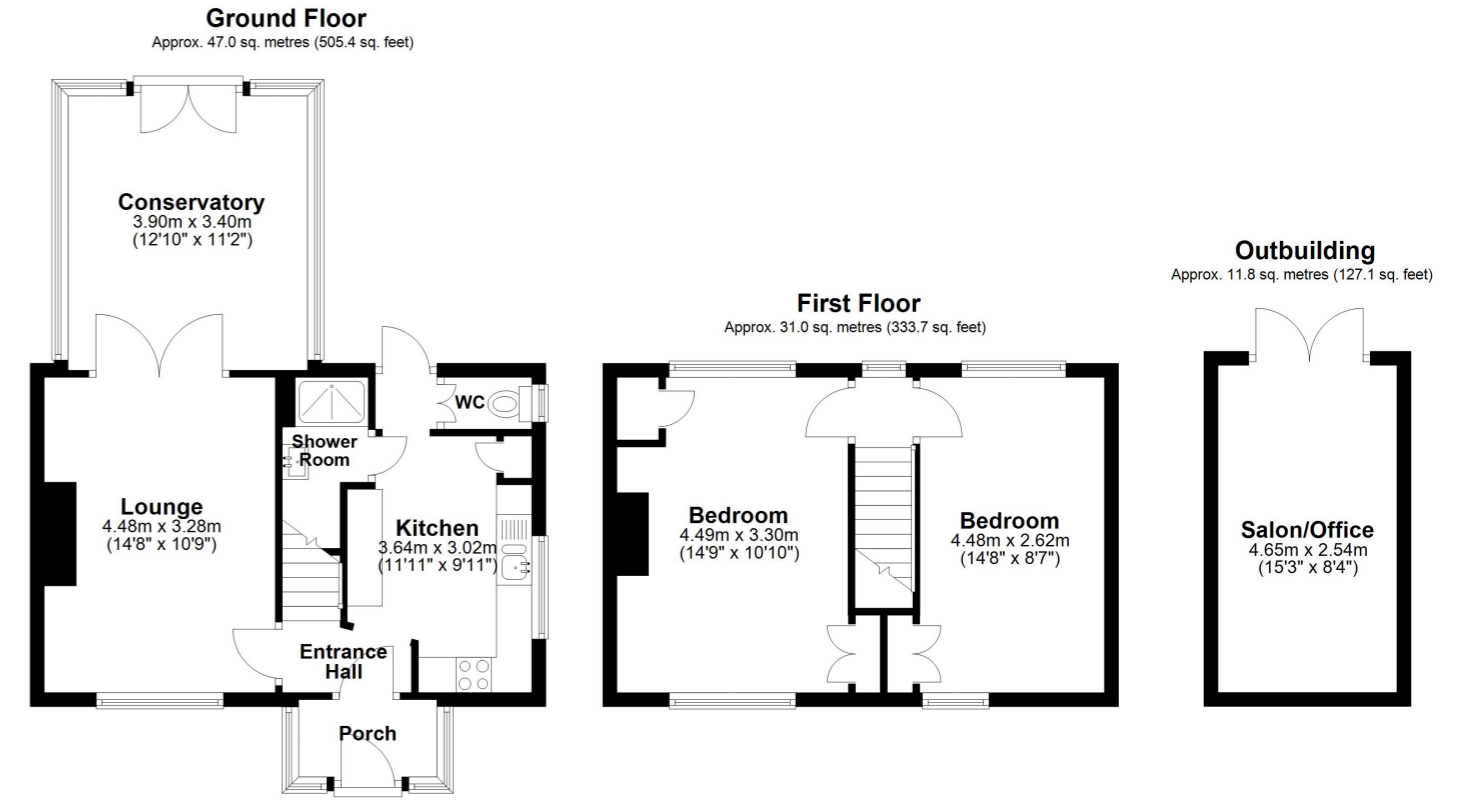
Bedroom Two

14' 8" x 8' 7" (4.47m x 2.62m)

Rear Garden

Salon/Office

15' 3" x 8' 4" (4.65m x 2.54m)



Total area: approx. 89.8 sq. metres (966.2 sq. feet)

