



North End  
Longhoughton  
Alnwick  
Northumberland  
NE66 3JG

Offers In Excess Of £546,000

bettermove



# North End Alnwick

Bettermove are proud to present this 6 bedroom detached house in Alnwick available with no forward chain.

The property benefits from double glazing, gas central heating throughout and has off street parking available via the driveway and garage.

The council tax band is G.

The interior of this beautifully presented property comprises a spacious living room, dining room, study, utility room, family room and fitted kitchen on the ground floor. The first floor consists of 4 bedrooms, 3 en suite bathrooms and the family bathroom. The second floor holds a further 2 bedrooms. The exterior boasts private gardens, perfect for enjoying the summer months.

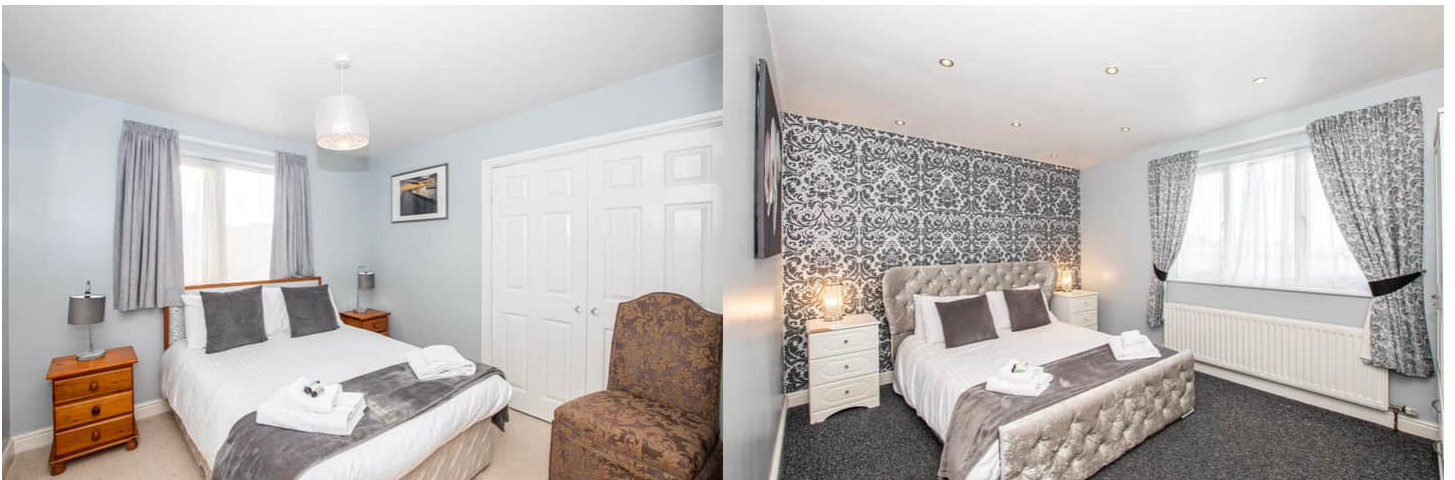
Located in the popular coastal village of Longhoughton, the property is close to a range of amenities, including shops, supermarkets, restaurants and pubs. Excellent transport connections can be found from the A1 and local bus routes.

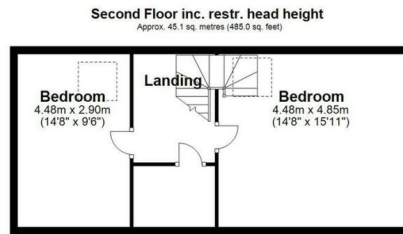
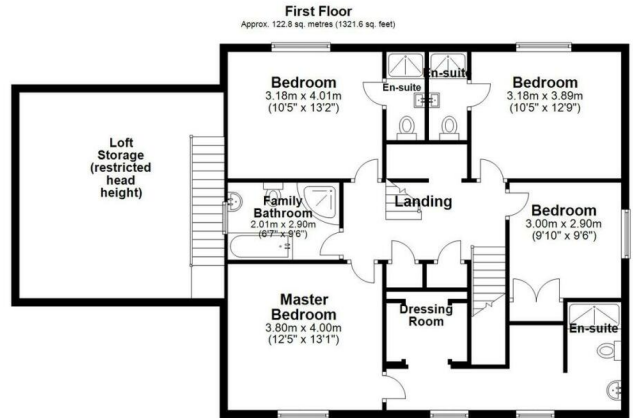
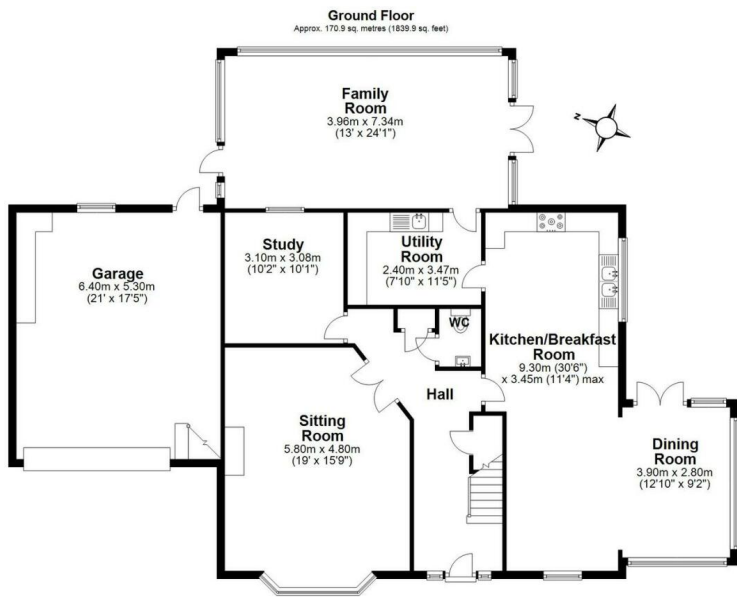
This exciting opportunity should not be missed! All enquiries can be made through Bettermove on 0330 004 0050.

You can secure the purchase today by paying an exclusivity fee of £1,000 which gives you the rights to purchase within a given timeframe.

Paying this fee ensures that the seller takes their property off the market and reserves it exclusively for you, therefore eliminating the risk of gazumping and aborted costs.

The exclusivity fee is returned to you upon successful completion of the property.





Total area: approx. 338.8 sq. metres (3646.5 sq. feet)

Floor plan is approximate and is provided for visual reference only.  
Plan produced using PlanUp

Little Garth

Energy Efficiency Rating		
	Current	Potential
Very energy efficient - lower running costs		
(92+) <b>A</b>		
(81-91) <b>B</b>		
(69-80) <b>C</b>	73	78
(55-68) <b>D</b>		
(39-54) <b>E</b>		
(21-38) <b>F</b>		
(1-20) <b>G</b>		
Not energy efficient - higher running costs		
<b>England, Scotland &amp; Wales</b>	EU Directive 2002/91/EC	





20-22 Bridge End, Leeds, LS1 4DJ  
t: 0330 004 0050 e: hello@bettermove.co.uk  
[www.bettermove.co.uk](http://www.bettermove.co.uk)