



HOUSEFOX.CO.UK

Full estate agency service at online prices

e: sales@housefox.co.uk | w: www.housefox.co.uk



Longridge Way, Weston Village, Weston-Super-Mare, Somerset, BS24 7BS
£285,000

01934 314242 01275 404601 01278 557700
Viewings strictly by appointment



HOUSEFOX.CO.UK

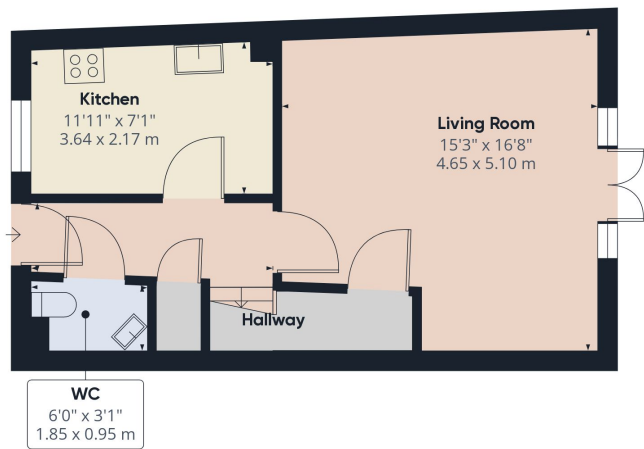
Energy Efficiency Rating		Current	Potential
Very energy efficient - lower running costs			
(92+)	A		
(81-91)	B		
(69-80)	C		
(55-68)	D		
(39-54)	E		
(21-38)	F		
(1-20)	G		
Not energy efficient - higher running costs			
England, Scotland & Wales		69	82
		EU Directive 2002/91/EC	

Description

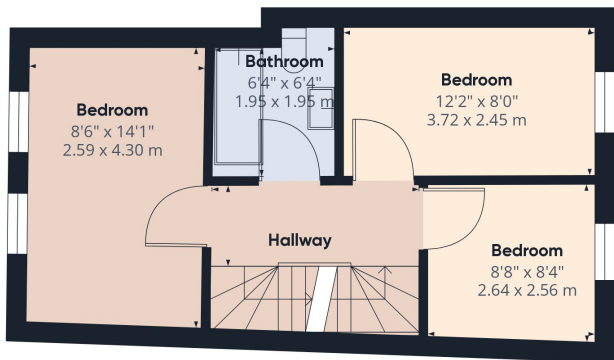
House Fox Estate Agents are pleased to present to the market this generously proportioned, five/six bedroom family town house residence, located on a sought-after thoroughfare in Weston Village.

Boasting expansive flexible living/bedroom areas spread across three levels. In brief, the property comprises on the ground floor a kitchen, living room, & cloakroom, on the first floor three bedrooms plus a family bathroom & on the second floor two larger bedroom one with en-suite shower room. Additional amenities include full gas central heating, double glazing & low maintenance rear garden.

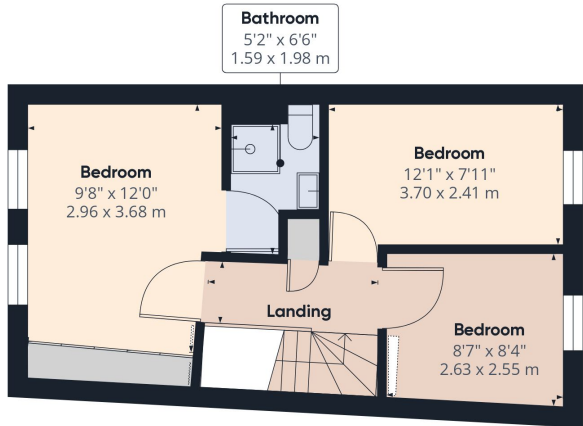
This large family home with flexible living & bedroom accommodation is sure to attract much attention & we recommend an early viewing in order to fully appreciate all there is to offer.



Floor 0



Floor 1



Floor 2



Approximate total area⁽¹⁾
1131.18 ft²
105.09 m²

(1) Excluding balconies and terraces

While every attempt has been made to ensure accuracy, all measurements are approximate, not to scale. This floor plan is for illustrative purposes only.
Calculations are based on RICS IPMS 3C standard.

GIRAFFE360

A survey has not been carried out, nor have the services, appliances or fittings been tested. All measurements are approximate and should not be relied upon for furnishing purposes.