



67 Westcroft Way, Kelty, Fife, KY4 0AU

Immaculately Presented Two-Bedroom, Terraced Home with Private Gardens

Up to date price and viewing info at mov8realestate.com/property

espc rightmove[®] find your happy Zoopla

Property Description

Immaculately presented two-bedroom end-terraced home, featuring a spacious private rear garden. Quietly positioned off-street in a modern, well-maintained, and family-friendly residential development in Kelty, Fife.

Comprises an entrance hall with a stairway, a living and dining area, a kitchen, two well-proportioned bedrooms, and a contemporary family bathroom.

Key features include a fully integrated modern kitchen, a family bathroom, contemporary flooring throughout, and are complemented by efficient gas central heating and double glazing. Externally, the property boasts a neat front lawn and a substantial rear garden—ideal for outdoor gatherings and enjoying the open space.

A welcoming entrance leads into the home, with the spacious living/dining room set to the right—finished with wood-effect flooring and light décor, this inviting area is perfect for entertaining and includes a wall-mounted TV point. The kitchen, with tiled flooring, is complete with granite-effect countertops, a modern splashback, a sink with drainer, and integrated appliances including a double oven, gas hob with canopy extractor, washing machine, and fridge/freezer.

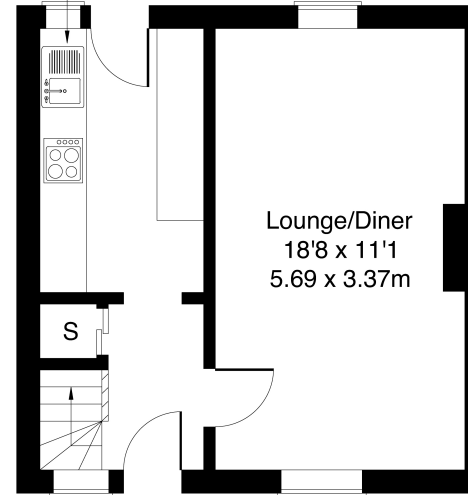
Upstairs, carpeted flooring continues through the landing and into bedroom two, while bedroom one features wood-effect flooring, a built-in cupboard, and plenty of space for freestanding furniture. Light décor runs throughout both bedrooms. A modern three-piece family bathroom with a shower over the bath completes the property.



67 Westcroft Way, Kelty KY4 0AU

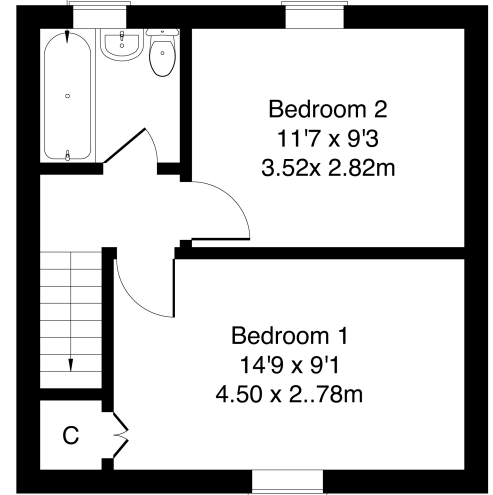
Approximate Gross Internal Area: (667 sq ft - 62 sq m.)

Kitchen
11'2 x 6'5
3.40 x 1.96m



Ground Floor

Bathroom
6'2 x 5'8
1.87 x 1.73m



First Floor

Legal Disclaimer : Floor-plan and measurements are for illustrative guidance only, and not intended to form part of any contract.

Area Description

The town of Kelty is set amid lovely open green spaces such as Lochore Meadows Country Park, Loch Leven and Loch Fitty. The area is well served for schooling at all levels with multiple primary schools and secondary education, including the nearby Kinross High School. Kelty is well placed for commuting as it is adjacent to the M90 motorway with easy access to Edinburgh, Perth, Kinross and Dunfermline. A former coal mining village in the heart of Fife, the town has a good range of local shopping throughout, with banks,

churches, a bowling club and other central amenities. There are regular bus services to the main neighbouring towns of Cowdenbeath, Dunfermline and Kinross. Nearby Dunfermline offers a large retail park, an Asda superstore, a leisure park with an Odeon cinema, a theatre and sports facilities. The neighbouring town of Kinross sits beside Loch Leven, the largest loch of the Scottish lowlands, and offers further amenities and outdoor recreation activities such as a golf course and thirteen miles of walking and cycling trails.





Our Services

-  Free pre-sale property valuations
-  Great value fixed estate agency fees
-  Extensive buyer matching database
-  Purchase and sale conveyancing

Contact Us

0345 646 0208

sales@mov8realestate.com

www.mov8.com

Head Office

6 Redheughs Rigg, Edinburgh, EH12 9DQ

Glasgow Office

77 Renfrew Street, Glasgow, G2 3BZ



Estate Agents and Solicitors



These particulars do not form part of any contract and the statements or plans contained herein are not warranted nor are they to scale. All descriptions, dimensions, areas, reference to condition and necessary permissions for use and occupation and other details are given in good faith, and are believed to be correct, but any prospective purchaser should not rely on them as statements or representations of fact, and any prospective purchaser must satisfy themselves by inspection or otherwise as to the correctness of each of them. The Seller shall not be bound to accept the highest or any offer nor to accept a full offer of the Fixed Price where this is applicable. Approximate measurements have been taken by sonic device and measurements are most often taken to the widest point of any room or space. Services and appliances have not been tested for efficiency or safety and no warranty is given as to their compliance with any Regulations. Offers should be made using the Combined Standard Clauses.