



9 Whittle Court,
Knowlhill, Milton Keynes, MK5 8FT

Tel: 01908 231 551



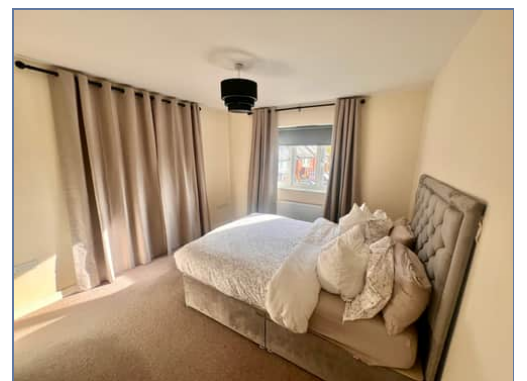
mail@elevationstateagents.com



**6 1 Suffolk Punch Close, Heelands, Milton
Keynes, Buckinghamshire, MK13 7FB**

£176,250 Leasehold

- Two Double Bedrooms
- Two Bathrooms
- Large living room
- Allocated parking
- 75% share
- £304 a month rent and service charge
- EPC Rating



See our full selection of properties online at www.elevationstateagents.com



A stunning TWO BEDROOM TWO BATHROOM Top floor shared ownership apartment for sale close to central Milton Keynes.

75% shared ownership with grand union housing association

£304 monthly rent & monthly service charge

Ideally located just a short drive away from Central Milton Keynes and the train station, this property is perfect for any first time buyers looking for a ready to move into property or investors looking for an easy let opportunity. The accommodation in brief comprises entrance hall with stairs leading up to the property, two double bedrooms, family bathroom and A Spacious open plan lounge/kitchen/diner.

For further details or to arrange a highly recommended internal viewing please call the elevation team today.

Open plan living, kitchen and dining

7.20m x 4.21m (23' 7" x 13' 10")

Bedroom 1

3.92m x 3.27m (12' 10" x 10' 9")

bedroom 2

3.46m x 2.42m (11' 4" x 7' 11")

Family bathroom

Disclaimer

Whilst we have endeavoured to prepare our sales particulars accurately none of the services, appliances or equipment have been tested. A buyer should satisfy themselves on such matters prior to purchase. Any measurements or distances mentioned in these particulars are for guide reference only. If such particulars are fundamental to a purchase, buyers should rely on their own enquiries. All enquiries should be directed to Elevation Estate Agents in the first instance.