





- Extended Semi-Detached Cottage
- Three Reception Rooms
- Kitchen
- Ground Floor Bedroom & En-Suite Shower Room
- Two First Floor Double Bedrooms
- Large Bathroom
- Large, Mature Gardens
- Off Road Parking

Description

This is a great opportunity to acquire a well proportioned character cottage, with scope to develop it to a dream home. The property stands on a large plot (0.18 acres) with mature gardens and off road parking for several cars. The property itself has been extended to the rear, which has added a new kitchen, ground floor bedroom and en-suite shower room. Housed in the original part of the cottage there is a lounge, dining room and snug on the ground floor and two double bedrooms, a large bathroom and landing on the first floor. Please note there is a small area of 'flying freehold' where the landing area, extends over the neighbours property.



Location

Crowton is small rural community located midway between the larger market towns of Frodsham and Northwich. Village amenities include The Hare & Hounds pub, Crowton Christ Church CE Aided Primary School and The local parish church. Weaverham and Kingsley offer a large range of amenities. Four railway stations serve the village with the West Coast Main Line service running through Acton Bridge and Runcorn, enabling access to London within two hours. Trains to Manchester and Chester run from Delamere and Frodsham. The accessible motorway network easily facilitates travel to Manchester and Liverpool with their respective airports 16 and 21 miles. Nearby Frodsham and Northwich cater for a more comprehensive range of amenities, including leading supermarkets with Waitrose, Sainsbury's and Tesco all represented.

Tenure

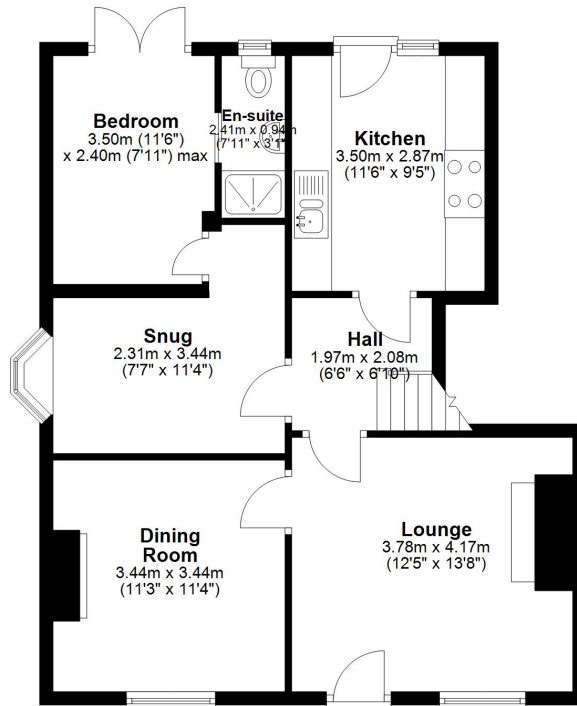
EPC Rating: E





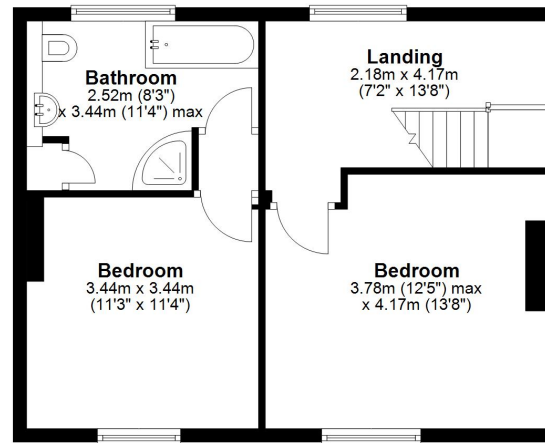
Ground Floor

Approx. 63.8 sq. metres (687.2 sq. feet)



First Floor

Approx. 46.7 sq. metres (502.8 sq. feet)



Total area: approx. 110.6 sq. metres (1190.0 sq. feet)

Williams Estates is the trading name of Williams Estates (Ltd). Registered address 33, The Green, Hartford, Northwich, Cheshire, CW8 1QA.

Reg number 07682683. Director Andrew P Williams