



9 Whittle Court,
Knowlhill, Milton Keynes, MK5 8FT

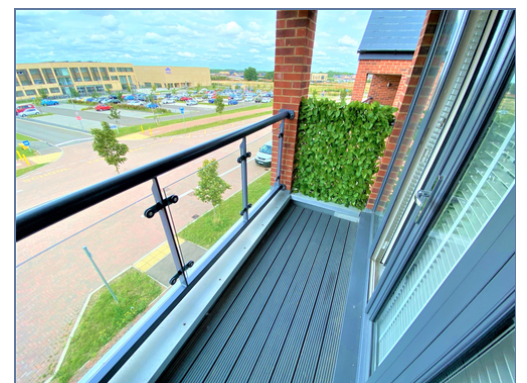
Tel: 01908 231 551 
mail@elevationstateagents.com



**Flat 9. Herdwick House, 333 Barosa Way,
Whitehouse, Milton Keynes, MK8 1BW**

£200,000 Leasehold

- One bedroom
- Penthouse
- Desirable new development of whitehouse
- Open Plan Living
- Ideal For First Time Buyers
- Fantastic school catchment
- Allocated Parking
- Energy rating B
- EPC Rating



See our full selection of properties online at www.elevationstateagents.com



This is a lovely one bedroom, penthouse apartment located in the popular new development of Whitehouse. The accommodation comprises an entrance hall with storage cupboard, open-plan lounge/kitchen/diner, one double bedroom and bathroom. Outside there is allocated parking for one vehicle. Please call the Elevation team today to arrange your viewing.

Whitehouse is a newer development and combines the convenience of city-style living with easy access to the beautiful Buckinghamshire countryside. With a short drive you will find an abundance of amenities such as; schools, shops, Milton Keynes Central station, M1 and A5 providing excellent transport links.

Ground rent £200 per year

Service charge £1,144 per year

120 years left on lease

INTERIOR

Entrance Hall

Doors leading to:

Lounge

14' 10" x 10' 5" (4.51m x 3.18m)

Kitchen

5' 11" x 11' 11" (1.81m x 3.63m)

Dining Area

6' 11" x 10' 3" (2.11m x 3.13m)

Bedroom One

13' 6" x 11' 4" (4.11m x 3.45m)

Family Bathroom

Fitted to comprise three piece suite

EXTERIOR

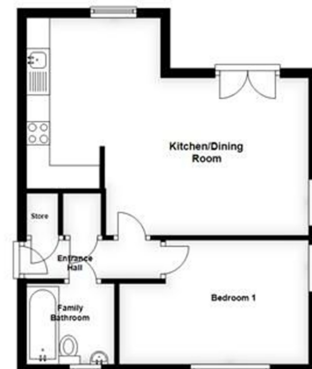
Allocated Parking

Space for one vehicle

Disclaimer

Whilst we have endeavoured to prepare our sales particulars accurately none of the services, appliances or equipment have been tested. A buyer should satisfy themselves on such matters prior to purchase. Any measurements or distances mentioned in these particulars are for guide reference only. If such particulars are fundamental to a purchase, buyers should rely on their own enquiries. All enquiries should be directed to Elevation Estate Agents in the first instance.

Ground Floor



Floor plans are for layout purposes only
Plan produced using PlanUp.