



Briar Road, Harrow, HA3 0DP

Cow & Co
LONDON



GUIDE PRICE £875,000 - £1,000,000

A wonderful sized four bedroom family home situated just off Northwick Circle and located in one of Kenton's premier residential roads.

The house comprises of an entrance porch, hallway, guest cloakroom, integral garage, two reception rooms and a fitted kitchen to the ground floor whilst the first floor comprises of a landing with access to loft space, four generous sized bedrooms with fitted wardrobes and a suite shower room/wc and a separate family bathroom/wc.

The rear garden extends to approximately 100ft and there is massive potential to further extend to the rear , the loft and garage (stpp).

Briar Road is much sought after residential location in Kenton and is located close to some excellent schools as well as shops, restaurants, bars and excellent transport links.

Viewing is most highly recommended.

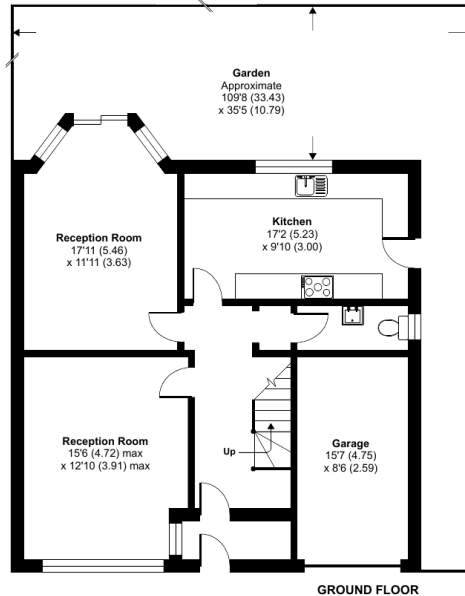
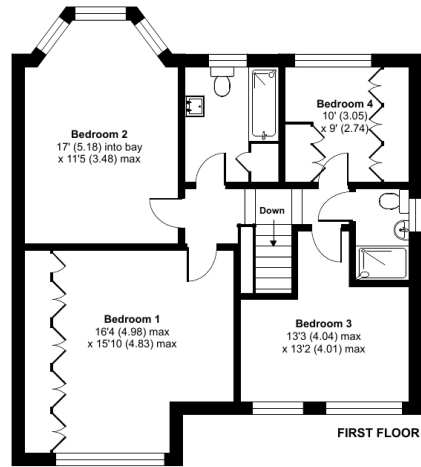


- 4 bedrooms
- Two generous sized reception rooms
- Large fitted kitchen
- Garage via own drive and off street parking
- Large rear garden
- Close to many local amenities
- Huge potential to extend to rear, loft and garage (stpp)
- Two bathrooms plus downstairs WC

Briar Road, Harrow, HA3

Approximate Area = 1632 sq ft / 151.6 sq m
Garage = 137 sq ft / 12.7 sq m
Total = 1769 sq ft / 164.3 sq m

For identification only - Not to scale



Floor plan produced in accordance with RICS Property Measurement Standards incorporating International Property Measurement Standards (IPMS2 Residential). © nchecom 2024. Produced for Cow & Co Properties Ltd. REF: 1103726

Tel: 0208 065 0010
Email: thehub@cowandco-london.com
Web: cowandco-london.com

Agents note: All measurements are approximate and whilst every attempt has been made to ensure accuracy they are for general guidance only and must not be relied on. The fixture and fittings referred to have not been tested and therefore no guarantee can be given that they are in working order. Internal photographs are reproduced for general information and it must not be inferred that any item shown is included with the property.

Cow & Co
LONDON