



Whalley Drive, Formby,
L37 8EB

OFFERS OVER
£230,000

SM

STEPHANIE MACNAB
ESTATE AGENT

Welcome to this immaculate TURNKEY semi-detached BUNGALOW, nestled in a quiet CUL-DE-SAC with excellent kerb appeal.

As you approach the property, you'll be greeted by a spacious PORCH that leads into the ENTRANCE HALL and the front LOUNGE. The lounge, adorned in a neutral palette that extends throughout the home, exudes a sense of calm and comfort. Adjacent to the lounge, the KITCHEN is both tasteful and practical, featuring modern amenities that cater to your everyday needs.

Towards the rear of the property, you'll find TWO well-appointed BEDROOMS. One of these rooms is currently utilised as a DINING ROOM, showcasing the flexibility of the space. The bright and practical WET ROOM is designed for convenience and ease of use.

One of the STANDOUT FEATURES of this bungalow is the CONSERVATORY, which runs the full width of the property. It provides a tranquil space to enjoy the view of the rear garden, where you can watch birds and admire the blooming white hydrangea in the summer months.

Additional benefits include OFF-ROAD parking with double timber gates leading to the GARAGE, offering both security and convenience.

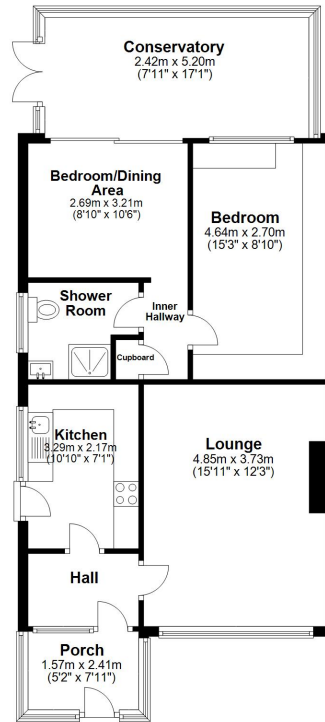
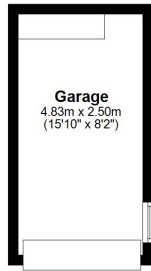
This property is offered with NO ONWARD CHAIN, making it a straightforward move-in opportunity.

To view this gem, call 01704 516 626 today.





Ground Floor
Approx. 87.2 sq. metres (936.1 sq. feet)



Total area: approx. 87.2 sq. metres (936.1 sq. feet)

