



14 Ian Close, Bexhill-on-Sea, East Sussex,
TN40 2RL

£310,000

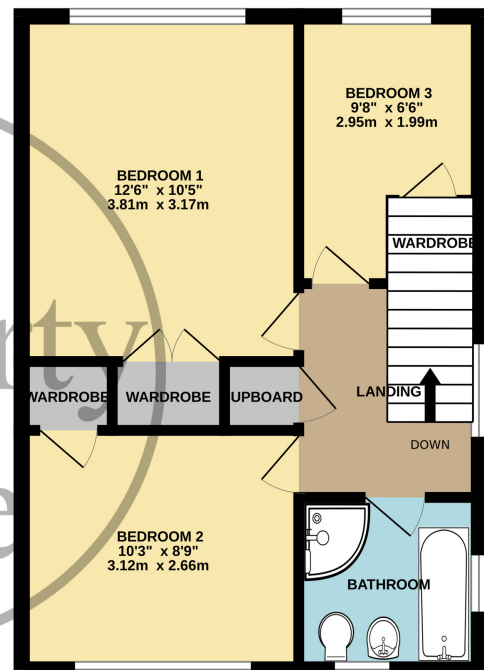
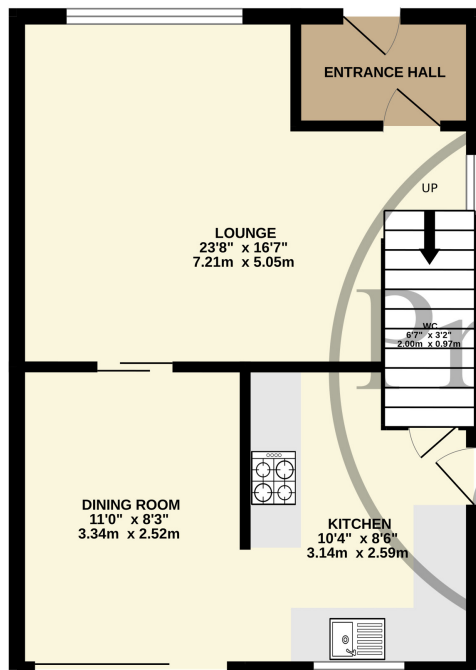


- Semi-Detached House
- Spacious Lounge
- Separate Dining Room
- Three Well Proportioned Bedrooms
- Modern Fitted Bathroom
- Single Garage
- Off-Road Parking For Several Vehicles
- Landscaped Garden.
- Sought After Residential Location
- Viewing Highly Recommended.



GROUND FLOOR
392 sq.ft. (36.4 sq.m.) approx.

1ST FLOOR
392 sq.ft. (36.4 sq.m.) approx.



TOTAL FLOOR AREA : 784 sq.ft. (72.8 sq.m.) approx.

Whilst every attempt has been made to ensure the accuracy of the floorplan contained here, measurements of doors, windows, rooms and any other items are approximate and no responsibility is taken for any error, omission or mis-statement. This plan is for illustrative purposes only and should be used as such by any prospective purchaser. The services, systems and appliances shown have not been tested and no guarantee as to their operability or efficiency can be given.
Made with Metropix ©2024